

GARFIELD MTN.

with BILL ^{Romms} Lawson 6/2/94

183-1

Site	P	Δp	Δe	e calc	e map	time
(A) Allaben Sta.	30-66	0-00	0	997	997'	11:00 AM
(B) 2nd quarry	30-54	0-12	116	1113		
(C)	30-38	0-28	270	1267		
(D)	30-35	0-31	299	1296		
(E)	30-21	0-45	434	1431		NOON
(F)	30-14	0-52	502	1499		
(G) 4th quarry	30-08	0-58	560	1557		
(H)	30-06	0-60	579	1576		
(I)	30-02	0-64	618	1615		
(J) old road	29-98	0-68	656	1653		
(K)	29-88	0-78	753	1750		
(L) lunch	29-78	0-88	849	1846		12:50 PM
(M)	29-63	1-03	994	1991		
(N)	29-36	1-30	1255	2252		
(O)	29-30	1-36	1313	2310		
(P) 2380' knob	29-20	1-46	1409	2406	2380' knob	1:48 PM
(Q) 2420' knob	29-20	1-46	1409	2406	2420' knob	1:55
(R) lookout W	29-12	1-54	1486	2483		
(S)	29-08	1-58	1525	2522		
(T) Summit Garfield	29-02	1-64	1583	2580	2580'	2:50
	29-02	1-84	1680	2580		3:20
(U)	29-10	1-76	1607	2507		
(V) join blaze	29-26	1-66	1516	2416		
(W)	29-35	1-51	1379	2279		
(X)	29-44	1-42	1296	2196		
(Y) monument	29-46	1-40	1278	2178		
(Z)	29-60	1-26	1150	2050		
(AA)	29-62	1-24	1132	2032		4:20
(BB) blaze bend	29-70	1-16	1059	1959		
(CC)	29-66	1-20	1096	1996	2000' knob	
(DD) blaze corner	29-80	1-06	968	1868		
(EE)	29-96	0-90	822	1722		
(FF)	30-02	0-84	767	1667		
(GG)	30-07	0-79	721	1621		
(HH)	30-14	0-72	657	1557		
(II)	30-24	0-62	566	1466		
(JJ)	30-39	0-47	429	1329		
(KK)	30-41	0-45	411	1311		
(LL)	30-48	0-38	347	1247		
(MM)	30-58	0-28	256	1156		

$$\frac{\text{Elev } \Delta = 2580 - 997' = 1583'}{P \Delta = 30-66 - 29-02'' = 1.64''} = \frac{1583'}{1.64''}$$

$$R = 0.9652$$

See p. 137-2
bottom for
more.

$$\frac{E \Delta = 2580' - 900' = 1680'}{P \Delta = 30-86 - 29-02'' = 1.84''}$$

$$R = 0.9130$$

← addition (CC) = 1973'
(29-68, 1.18'', 1078')

→ out Kachman Rd. 30-86, elev 900', 5:50 PM

TREES & SHRUBS

SHAGBARK HICKORY

- Sapling in Allaben > 3" DBH
 - (H) 1576': one 12" tree
 - (C) 1267' terrace: 2 trees, 9" DBH.
 - (CC) 1973' double trunk, each 12"
 - (DD) 1868' 2nd & 3rd shags on descent below corner
 - (FF) 1667' shags 15"
 - below (GG) ca 1600' These shags around quarry.
 - (JJ) 1329' One shag at small quarry
- SHAG** seems most abundant around the quarries!!

BITTERNUT HICKORY

One tree seen all day at (I) 1615'.

- BUTTERNUT (K) 1750' on steep talus
- (MM) 1156' above
 - (N) 2252'

BLACK BIRCH

- (A) 997'
 - (B) 1113'
 - (D) 1431'
 - (F) 1499' leaning strongly with blocky bark
-
- (Z) 2050'
 - (AN) 2032' common

CARPINUS

- (K) 1311'

ASH

- 18-2
- (B) 1113'
 - (D) < 1431' & > 10' tall
 - (H) 1576' dom with SUB
 - (K) 1750'
 - (L) 1846'
 - (N) 2252'
 - (P) 2380'
 - (Q) 2420' to 16"
- COL abun, 12" to 18"
elev. 2400' meol
- (U) 2507'
 - (X) 2196' to 80' tall

BASSWOOD

- (B) 1113' (K) 1750'
- (N) 2252'
- (EE) 1722' on terrace
- (KK) 1311'

- OSTRYA (W) 1576'
- (B) 1113'
 - (L) 1846'
 - (Q) 2420'
 - (U) 2507' under SUB to 70'

BIG TOOTH

- (AA) 2032'

ILEX MONTANA

- (Z) 2050' abun.
- (Z) 2050' abun.
- (B) 1113'

HAMAMELIS

- (A) 997'

REYNOS

- (T) 2580'

OAK

- (A) 997'
 - (B) 1113'
 - (C) 1267'
 - (D) 1431'
 - (K) 1750'
 - (M) 1991'
 - (Q) 2420'
 - COL 2400' to 16" x 40'
 - (R) 2483' to (S) 2522'
 - (T) 2580' Summit
 - (V) 2416' 24" DBH
 - (W) 2279 seedling common
- Dominates the crest between (X) 2196' & (Y) 2178' - dwt shallow soils

- (AA) 2032' 24" diam down with 48" deep pancake! then 24" stump with bark on = 116 yrs. Logging ca 1985?
- (BB) OAK stump 30" diam
- (CC) OAK dom. 2000' knob
- (DD) OAK dom. 1868'

- VACCINIUM ANG (T) Summit in flower

HEMLOCK

- (B) Repro. 1113' & young
 - (C) 1367' Dense young under OAK, but no mature HEM.
 - (R) 2483' Young HEM under hardwood, then dense HEM on narrow crest to 10" DBH under OAK+B.
- Then larger & dominant to 16" x 50', 2522' abun by ending at (S) a
- # small on N shoulder 2420'

(continued)

HERBS

ASPILETA at 3rd quarry, ca. 1400'

ADIANTUM (E) 1431'

(H) 1576'
(K) 1750'

POLYSTICHUM BRAUNII

(K) 1750' on steep talus

PLATANUS ORBICULATA

(C) 2310' lvs. only

(Q) 2nd between square wooden structure & 2400' col:

lvs. only
ALLIARIA: 3rd X, ±1300'
VERATRUM

In flower in 2400'
col after (Q):
NO Sphagnum

DRYOPTERIS GOLDIANA

(L) 1247'

(G) 1557':
CAUL-PA-ALLIUM-LAP
OSMO-VC-ROBT

(K) 1750' LAP on steep talus

(P) MC, TB 2380' knobs.
\$ int, D mang, P cili

(R) open Carex 2483'

between (R) & (S):

OX-TB m fl - \$ int
LL - Lycu obs

(T) Carex open on several inches of till 2580'

CANOPY HEIGHTS

(P) Knob 2380': 40 ft.

(Q) Knob 2420': 40 to 50

ft.
col after (Q) = 2400' to 40'

(T) Summit 25' NEMS.

(U) 2507': SUBs to 70'

(X) 2196' = SUB & ASH to 80'

(R) 2483' = 20' stunted by wind shear at lockart

(Q) many small trees

SOILS

All warmer have big waste piles of stone.

Shallow till on crest at (R) 2483'

48" deep (!) pancake at (AA) 2032' with downed oak

183-3

MORE TREES reenter at (C) 1996'

HFM (continued) (L) few scab. young

2nd HFM grave, done at Summit (T) 2580' to 25' x 12" to 24"

SUG

(D), (H) 1576' dom with ASH

(K) 1750', (L) 1846', (N) 2252'

(P) 2380' knob, (Q) 2420' knob

(X) 2196' with abn. 1992 seedling

(U) 2507' to 70'

B (S) dom 2522' between HFM graves

(Q) 2420' knob

(R) 2483' to (S) 2522'

(Z) dominant 2050'

YB (B) 1113'

(T) Summit 2580'

PB (B) 1113'

RM (R) 2483' to (S) 2522'

MO (B) 1113', (N) 2252', (P) 2380' knob
(Q) 2420' knob

BC (N) 2252'

(P) 2380' knob

(Q) 2420' knob

(R) 2483'

(T) 2580' Summit

(L) 1846' few

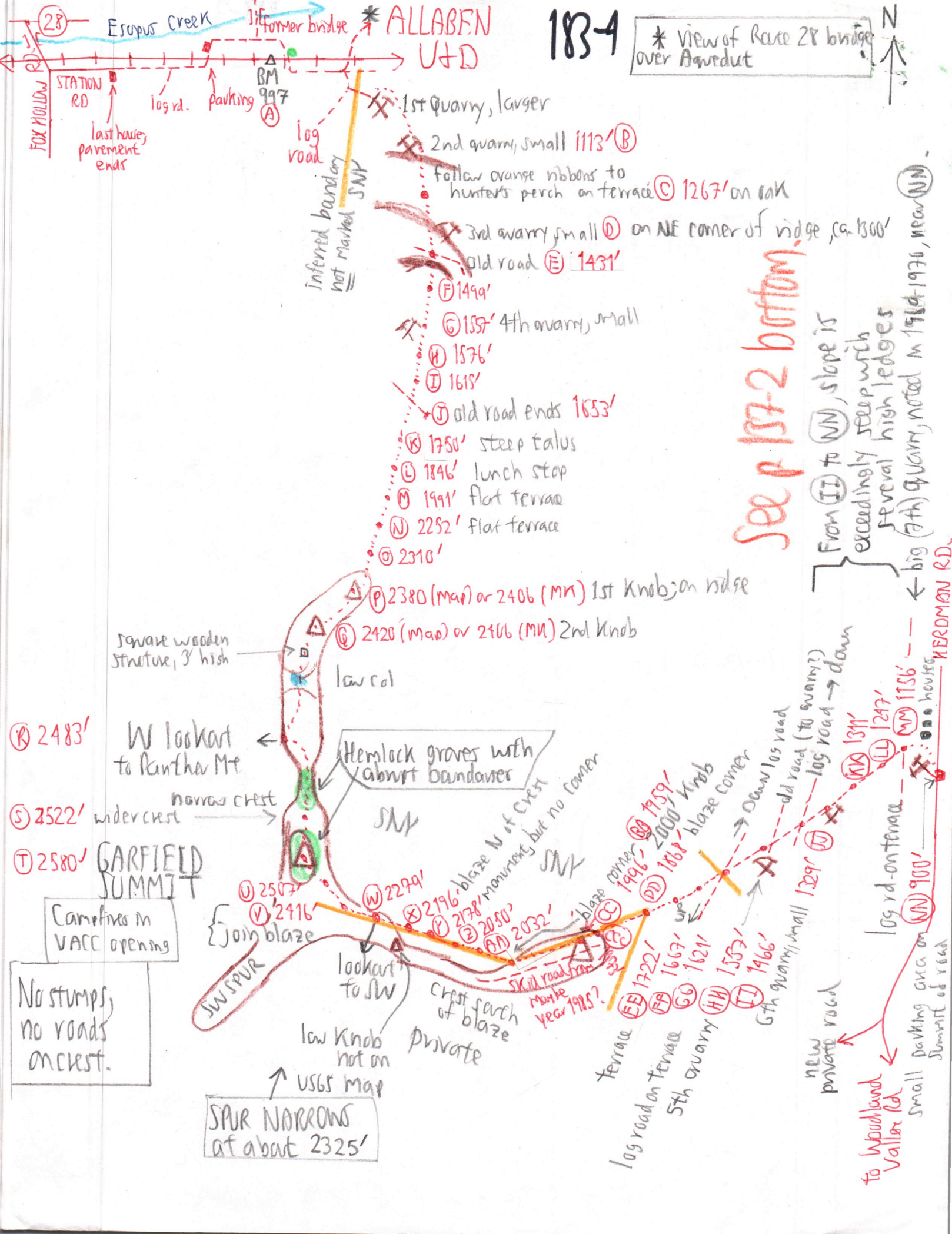
col after (Q) = 36" DBH

AMEL

(T) Summit 2580'

CHC (R) 2483'

MM Jul quarry, ca. 1300'



183-4

* View of Race 28 bridge over Aqueduct



Esopus Creek
 former bridge * ALLABEN
 UTD

FOX HOLLOW RD
 STATION RD
 last house pavement ends
 log rd.
 parking
 BM 997
 (A)

1st Quarry, larger
 2nd quarry, small 1113' (B)
 follow orange ribbons to hunter's perch on terrace (C) 1267' on oak
 3rd quarry, small (D) on NE corner of ridge, ca. 1300'
 old road (E) 1431'
 (F) 1499'
 (G) 1557' 4th quarry, small
 (H) 1576'
 (I) 1615'
 (J) old road ends 1653'
 (K) 1750' steep talus
 (L) 1846' lunch stop
 (M) 1991' flat terrace
 (N) 2252' flat terrace
 (O) 2310'

See p 137-2 bottom.

From (II) to (NN), slope is exceedingly steep with several high ledges
 ← big (7th) quarry, noted in 1964-1976, near (NN) HERDMAN RD.

(P) 2380 (map) or 2406 (MN) 1st knob on ridge
 (Q) 2420 (map) or 2406 (MN) 2nd knob
 square wooden structure, 3' high
 low col
 W look out to Panther Mt
 Hemlock groves with abrupt bandanas
 narrow crest
 (R) 2483'
 (S) 2522' wider crest
 (T) 2580' GARFIELD SUMMIT
 Camelines in VACC opening
 No stumps, no roads on crest.
 SW SPUR
 look out to SW
 low knob not on USGS map
 SPUR NARROWS at about 2325'
 chest search of blaze
 private
 Skill road from 1985?
 blaze corners 1996-2000 knobs
 (U) 2507'
 (V) 2416'
 (W) 2299'
 (X) 2196' blaze N of crest
 (Y) 2178' monument, but no corner
 (Z) 2080'
 (AA) 2032'
 (BB) 1959'
 (CC) 1946'
 (DD) 1868' blaze corner
 (EE) 1722' terrace
 (FF) 1667' log road on terrace
 (GG) 1621' 5th quarry
 (HH) 1557'
 (II) 1466' 6th quarry, small
 (JJ) 1329'
 (KK) 1311'
 (LL) 1247'
 (MM) 1156' house
 (NN) 900' log rd on terrace
 new private road
 to Woodland Valley Rd
 small parking area on Summit of road