

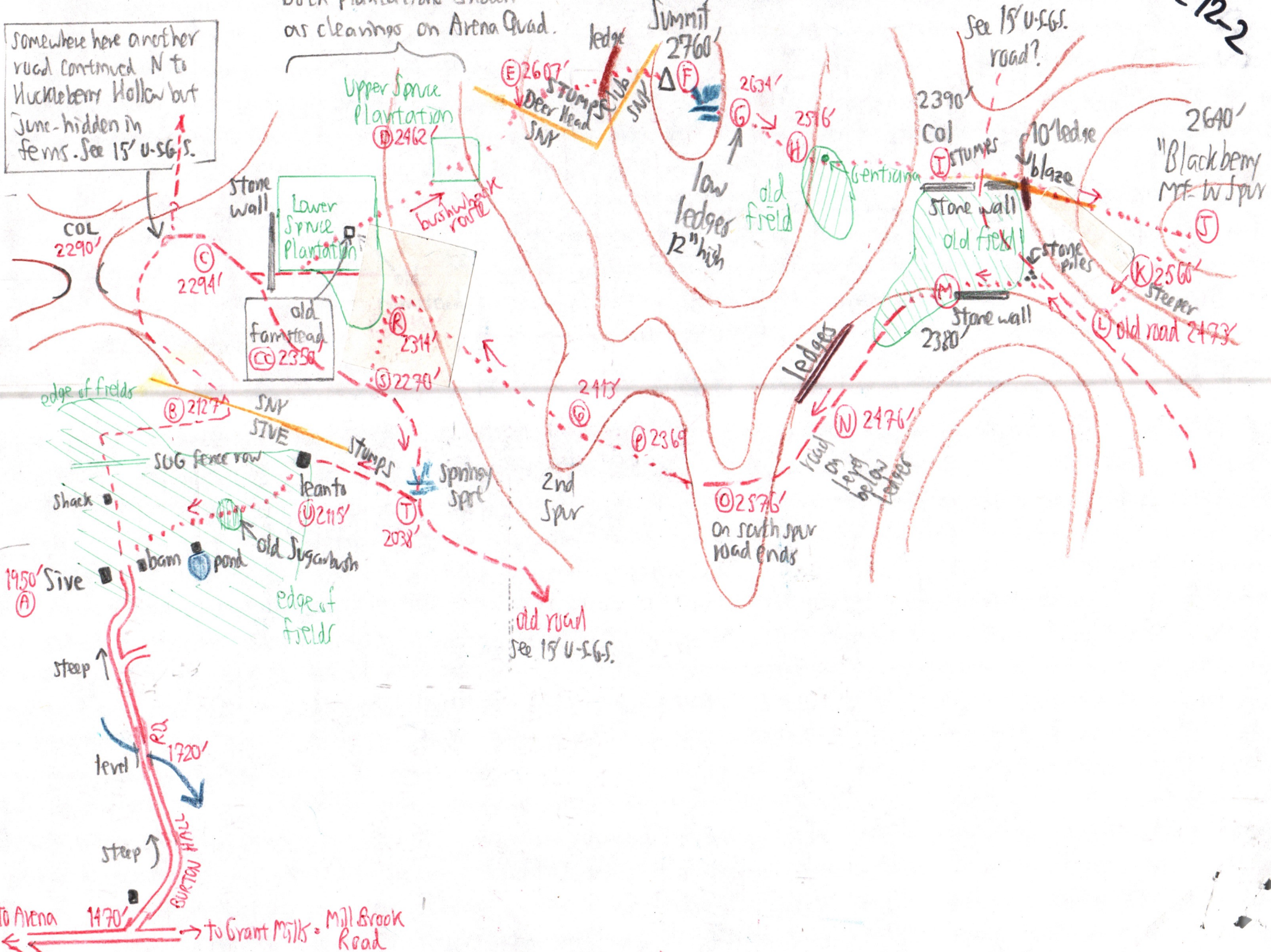
"Gentian" and "Blackberry" Mountains with Mary Sive 10/5/190
 on the ridge between the Mill Brook and Cold Spring (= Huckleberry) Hollows 292-1

Site	P	Δp	Δe	e	map e	time	notes
A Sive's house	29.77	0.00	0	1950	1950'	9:30 AM	
B	29.58	0.19	177	2127			$\frac{29.77 - 28.90''}{2760' - 1950'} = \frac{0.87''}{810'}$
C	29.40	0.37	344	2294		10:10	
old damstead	29.34	0.43	400	2350			
D Upper plantation	29.22	0.55	512	2462			$\frac{810}{870} = 0.931$
E	29.00	0.77	717	2667			
F Summit 2760' "Gentian Mt."	28.90	0.87	810	2760	2760'	10:55	
G	29.05	0.44	370	2634			$\frac{29.34'' - 28.90''}{2760' - 2390'} = \frac{0.44''}{370'}$
H Gentians (lunch)	29.19	0.29	244	2516		11:37-12:10	$\frac{370}{440} = 0.841$
I COL	29.34	0.00	0	2390	2390'	12:23 PM	
J W spur of "Blackberry Mt."	29.08	0.28	260	2640'	2640'	12:50	
K	29.16	0.20	186	2566'			$\frac{29.36 - 29.08}{2640' - 2380'} = \frac{0.28''}{260'}$
L	29.26	0.10	93	2473'			0.93
M COL, S of I	29.36	0.00	0	2380'	2380'	1:35	
N	29.30	0.39	430	2418'		2:00	
O S spur of "Gentian Mt"	29.21	0.45	496	2448'			
P	29.37	0.54	596	2546'			
Q 2nd S spur	29.37	0.38	419	2369'			$\frac{29.75'' - 29.36''}{2380' - 1950'} = \frac{0.39''}{430'}$
R Spruce plantation	29.33	0.42	463	2413'			
S on road.	29.42	0.33	364	2314'		2:50	1.103
T	29.46	0.29	320	2270'			
U lean-to	29.67	0.08	88	2038'			
V	29.60	0.15	165	2115'			
A Sive's house	29.75	0.00	0	1950'	1950'	3:28 PM	

Somewhere here another road continued N to Nuckleberry Hollow but June-hidden in ferns. See 15' U-SGS.

both plantations shown as clearings on Arena Quad.

"Gentian" Mt. Summit 2760'



to Arena 1470' → to Grant Mills = Mill Brook Road

Vegetation

292-3

Trees	Shrubs	Herbs	Ferns et al
<u>OAK</u> (B), (C), (H) (M) seedling (P) clump to 20" each, prob. sprouted from stump (Q)	HAMAM (B) (L)	RS abun (E), (J), (M)	Lycos obs (D) (O)
ASH (B), (C), (D), (E), (F), (J) (Q)	RCKNOS (D)	RA abun (J)	Lycos comp (M)
BASS (D), (H), between (L) & (M)	CRAT (M)	DX (E) (L)	DP (E) (F)
OST (D) (E) (H) (J) (F) east shoulder	CHK (M)	TIAR (E)	(H)
<u>BB</u> (B) (O) (R) (T)	AMEL (M) (N)	A DIV in fl. (E)	NYF (F)
<u>JVA</u> below (U) in field	Vacc ang (U)	AA (F)	\$ (F)
HEM (B), (O), grave below (S), large on 10 ledge E of (I), grave at (L), (I), (K), (C)	Spiraea tom (H)	PCIL (F)	PA (G)
CARP (H), (M)	MONOCOTS	Lycopus (F)	Onoclea (H)
APPLE (M)	CINNA (F)	IMP (F) <u>W</u>	Dmarg (I)
SUG dead & dying at (F) & (E) & (J) (Q) (M), (G) net multi-trunked	BRACHYELTUM (F)	ANOPHALIS (H)	(O)
B (F) (Q)	CK DEB (H)	ASTER CORD (H) (M)	Polypody (M)
BC (F), (J)		GENTIANA ^{CLAVIS} (H) & (M) 2 photos; broad, fleshy lvs., suborbicular under fls & broadly lance 1x3" below, fleshy	Lycos annot (O) (N)
VB (F)	ASCLEPIAS (M)	ASTER PREN (H) (M)	Cinn (F) <u>W</u>
MO (F) brg	ARCTIUM (M)	ASTER UMBEL (H)	
RM (Q), (G) net multi-trunked	POLY SAG (M)	SCAES (H)	
	GALROPTS (M)	EUP (H)	
	POT SIMPLEX (M)	COLLINSOMIA (H)	
	EUP (T)	MITCH (K)	
	CHRYSOSTEMUM (F)	COPTIS (L)	
	CLAYTONIA & TE abun at (E) according to Mary	S RUG } (M) S CAN }	

Forest History

2024

Site

Stumps present
 (E), (I) between
 (T) & (U)
 ca. 1960
 private land

Many size distinctions
 between pasture & hayfield.
 Last row to pasture herland
 ca. 1960, but hay cut as
 recently as 1986 or 1987. } cite this

Tree Heights
 (F) to 50' x 20"
 (J) to 50'

Trees, mainly maples,
 clumped, suggesting
 logging & sprouting
 ca. 1930s or 1940s
 (G), (Q) to 16"

Soil depth via
 "pancakes"
 >28" at (D), >24" at (F)
 Red silt puddle in W
 E end of (F) summit.

Photos:
 2^{sw} to Barkaboom Mt. Horizontal
 line on Barkaboom within forest at
 ±2500 level Man Sive
 says marks upper limit
 of farms.

Plantations:
 (C) & (D)
 White & Norway
 Spruce. Many says
 CCC era. Several
 firs along E side
 of farmhouse
 foundation,
 prob planted
 White Spr natural-
 ized.
 Both plantations
 shown on 7 1/2 U.S.G.S
 as clearings. Trees
 too young then for
 forest symbol on
 map.

2 of Gentian.

Blowdown (E) to (G) from
 SSE winds Many trees
 down.

Open stands between (I) & (J)
 and (J) due prob to
 forest tent Caterpillar
 destroying SUGs in early
 1980s. RA&RS thickets.
 We could not reach the
 summit of "Blackberry Mt"
 elev 2800 because of
 thickets, to (J) only.
 Also (D).