





# Dry Brook Ridge Trail Detail: German Hollow Trail to Penguin Rocks

5/21/20

APPROX. N

Dry Brook Ridge Trail  
 Built 1936 (NKSAR, 1936, p. 43).  
 Followed old acid plant  
 log road to "Monarda Swale",  
 brushed out anew beyond.

**Vegetation**  
 #79 = Hornbeam, but gone by 1983. ASH, OAK  
 Hop hornbeam  
 #78 = Witch hazel  
 #220 = Oak common  
 "Bear Den" Ledges 1st Mtn Ash  
 Some re-found with NYFA in 2017.

SNY Land Acquisition, Kondenbush Patent,  
 Great Lot 7, Garnetston Tract:

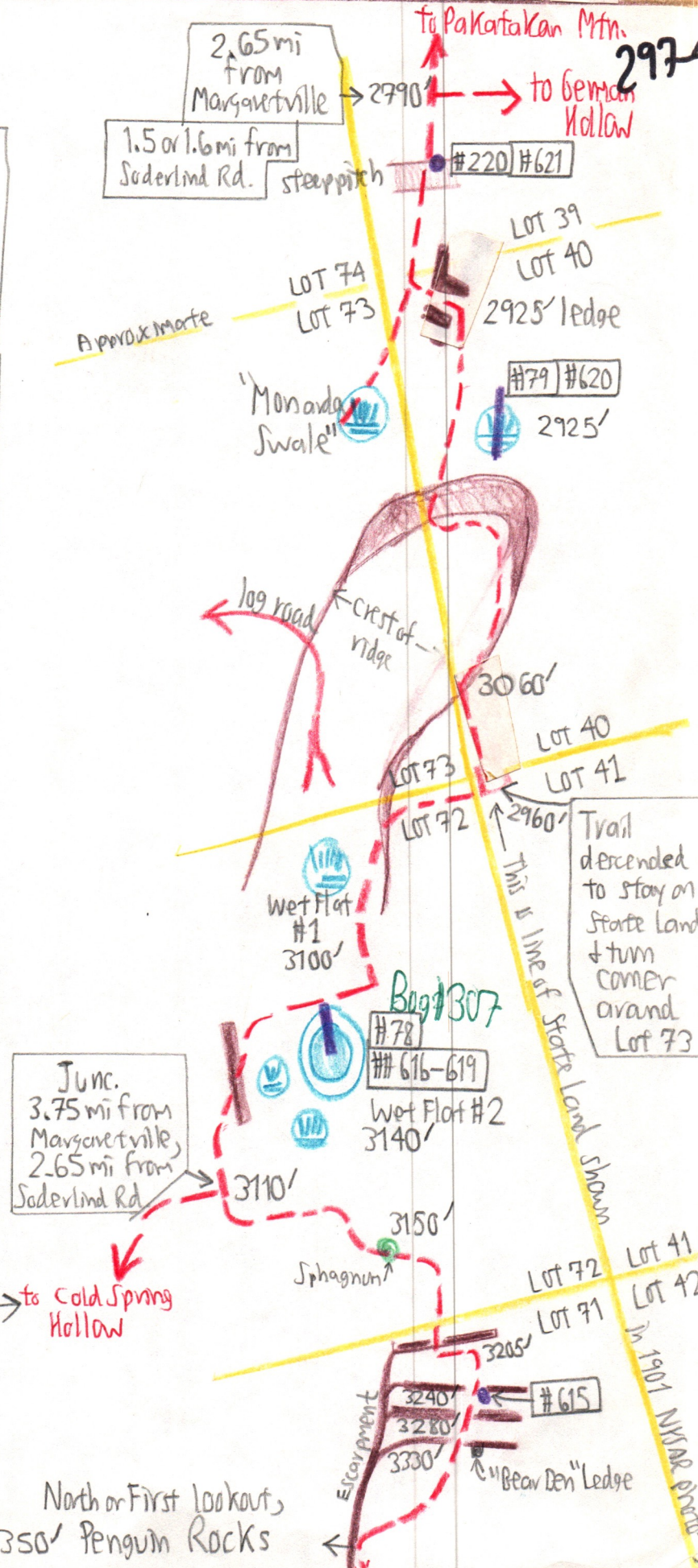
Lot 39, 157 ac.	1931	} Old Growth
Lot 40, 159 ac.	1931	
Lot 41,	between 1957 & 1970	} Old Growth
Lot 42,	private	
Lot 71, 160 ac	1853	} Old Growth
Lot 72, 145 ac	1853 & 1885	
Lot 73,	between 1970 & 1983	
Lot 74,		

Lot 73 logged in mid 1960s, done by 1969;  
 SUG + ASH & a few oak, 12" to 16" on the stump

Cold Spring Hollow Trail built  
 1936 with Lean-to (NKSAR, 1936, p. 44).  
 Last DEC map to show trail, 1970.  
 First DEC map not to, 1971.  
 Yellow markers.  
 Adams et al (1975) states:  
 "unmarked trail"

to Cold Spring Hollow

North or First lookout,  
 3350' Penguin Rocks



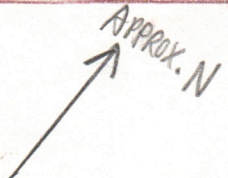


# Dry Brook Ridge Trail Detail: Penguin Rocks South

Completed 5/21/89

Pangman's

297-5



### SNY Acquisition

Lot 69	1905, 06, 09, 10
Lot 70	1881, 1885
Lot 71	1853
Lot 82	1853, 1891
Lot 83	153.7 ac 1936
Lot 84	25 ac Ulster 1906 2 ac Del. 1871, 1890
Lot 109	75 ac Ulster 1900
Lot 110	35 ac Delaware 1871, 1890 1906

3.8 miles from Soderlind Road

North 1st lookout, 3340'

2nd lookout, 3355' (Perched rock) (Pot. tree)

3rd lookout, 3375' (Potentilla tridentata)

4th lookout

South or 5th Lookout

3330' Bear Den Ledge

#4 #614 3385' to 3440'

#77 #613

#612

NORTH SUMMIT 3460' 3400'?

Or is North Summit really here? Noted 10/23/05.

### Hiking Times

	UP		DOWN		
	7/29/68	6/29/83	5/31/70	7/29/69	6/29/83
Soderlind Rd.	0:00	0:00	5:52		2:30
G.H. lean-to	0:33	3:55	5:37		
Junc. Pakatoken	1:37	4:07	5:20	1:20	
Margaretville				2:38	
Cold Spring Jc.	2:51	(log 3:50)	4:40	0:36	(log 0:55)
Penguin Rocks	3:56		4:00	0:00	
#219 [H wet]		5:50	3:15		0:00
DB lean to			1:20		
MB Road			0:00		

### Vegetation

#77 = 3-tooth cineraria, Rhododendron, oak.

#219 = Rhododendron

Approx. location Delaware County Line Ulster

