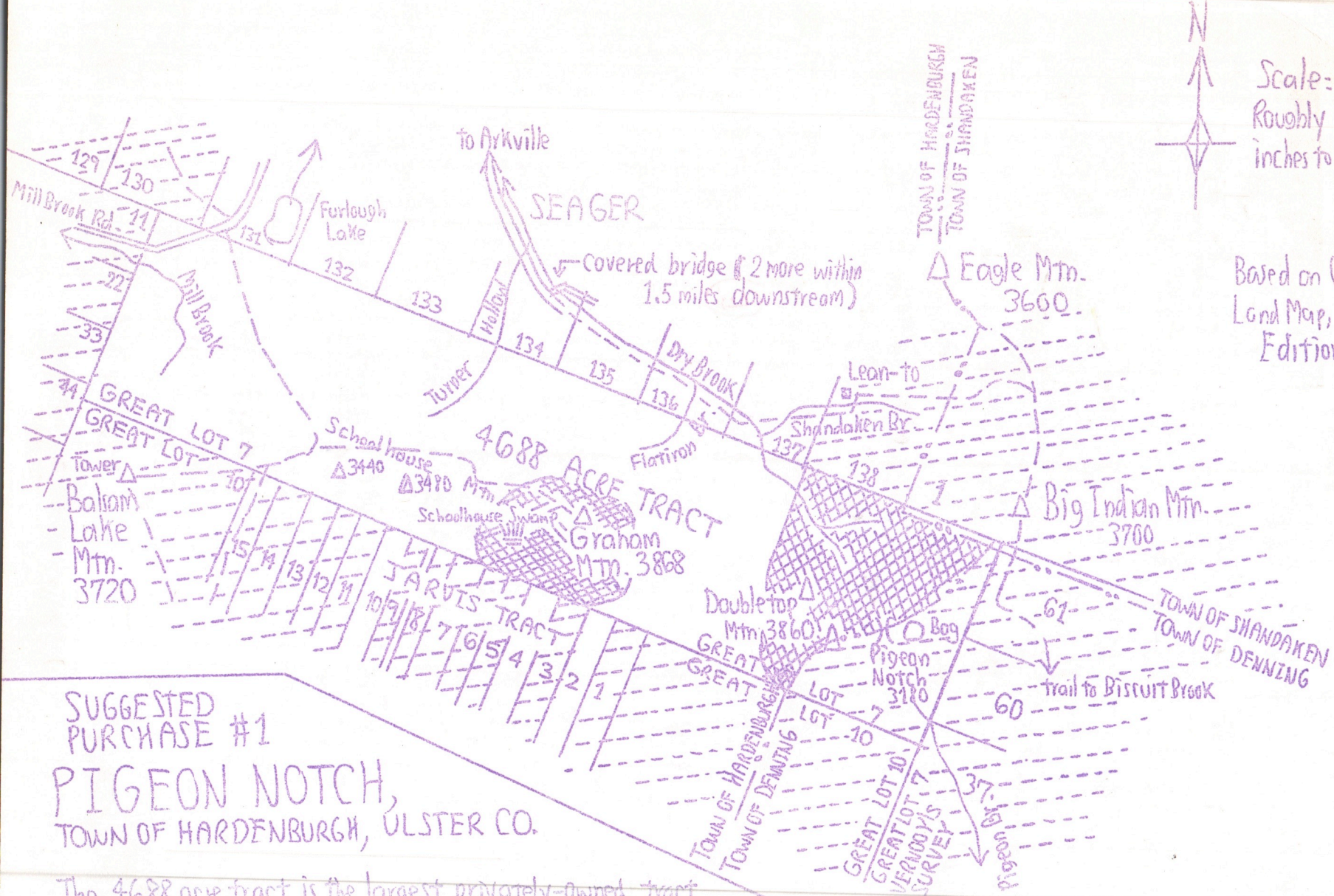




Scale:
Roughly 1 1/4
inches to the mile

Based on Catskill
Land Map, 1970
Edition



Field Notes Copy

250-57

SUGGESTED PURCHASE #1 PIGEON NOTCH, TOWN OF HARDENBURGH, ULSTER CO.

The 4688 acre tract is the largest privately-owned tract in the Catskills which includes two peaks over 3800 feet: Graham Mtn. and the north summit of Doubletop Mtn.

The Pigeon Notch area includes the westernmost outpost of spruce in the Catskills and a bog. Although both are on State Land, the line of private lands touches on the north. Some 200 feet downslope, first-growth sugar maple are being logged in the headwaters of Dry Brook; the steep logging roads are rapidly becoming gullies.



Michael Kudish January, 1973