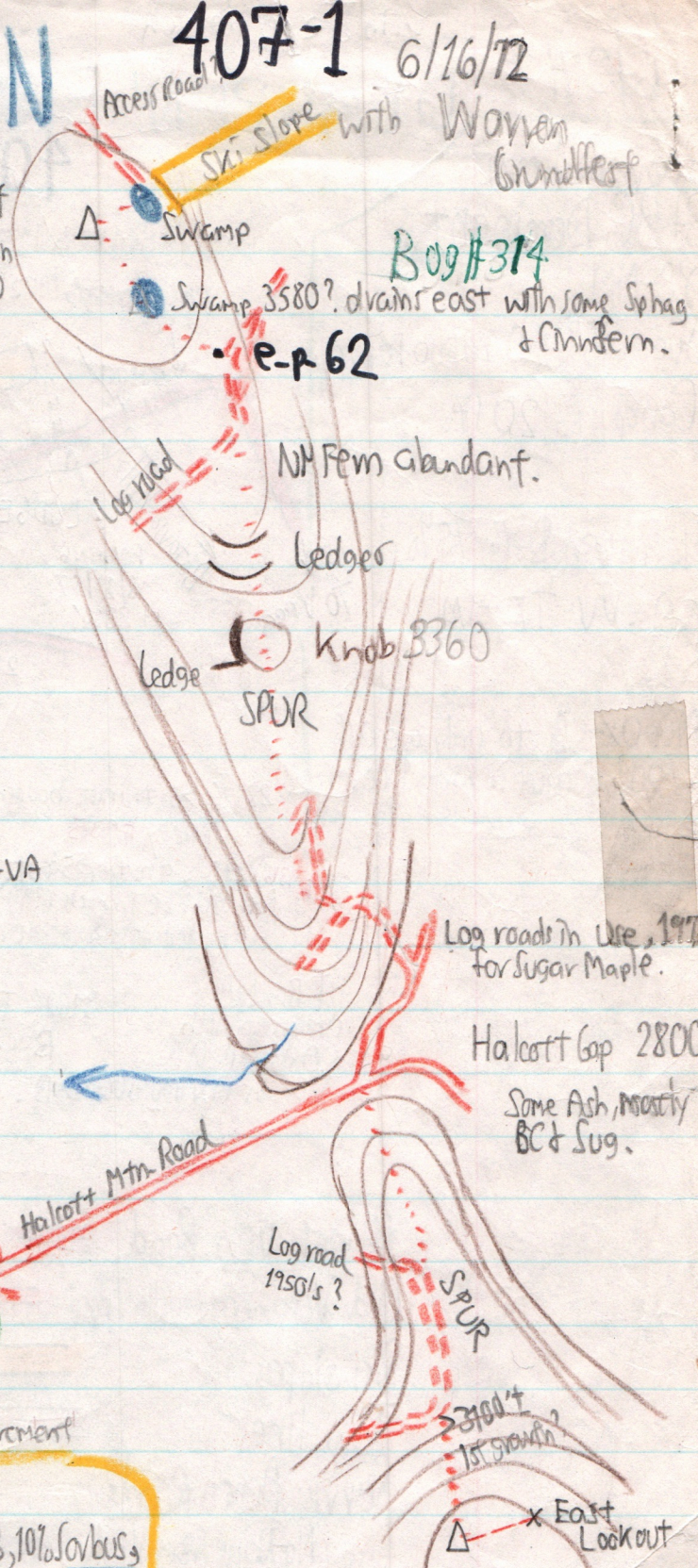


VLY-BEARPEN

407-1 6/16/72

	Elev	Pressure	Time
Halcott Base	2200	29.30	10:00
Halcott Gap	2800	28.67	10:30
Vly Summit	3529	27.86	11:20
H. Gap	2800	28.68	1:00
Bearpen Summit	3600	27.81	2:30
H. Gap	2800	ca. 3:45	
H. Base	2200	ca. 4:45	

Summit Bearpen 3600



Bo9#314

e-p 62

NY Fern abundant.

Knob 3360

Log roads in Use, 1972 for Sugar Maple.

Halcott Gap 2800

Some Ash, mostly BC & Sug.

Bearpen Summit canopy to 20ft:

- Sug-B-RM-BC-YB-MO-MM
- AA-RS-SM-Choke Cherry-Polyg cili-VV-VA
- OX-MC-ERR-CB ; \$ 75% t.

Vly Summit canopy 20 to 25ft.

about 40% BC, 20% sugar, 10% YB, 10% Sorbus, 10% B, the rest MM. No RM.

\$ to 70%, VV, Choke cherry, RS, SM, RA, AA, AN) Cinna.

MC, OX, CB, Polyg. ciliade, Dicr

less than 50% combined

Vly Summit 3529
Canister & Bench Mark