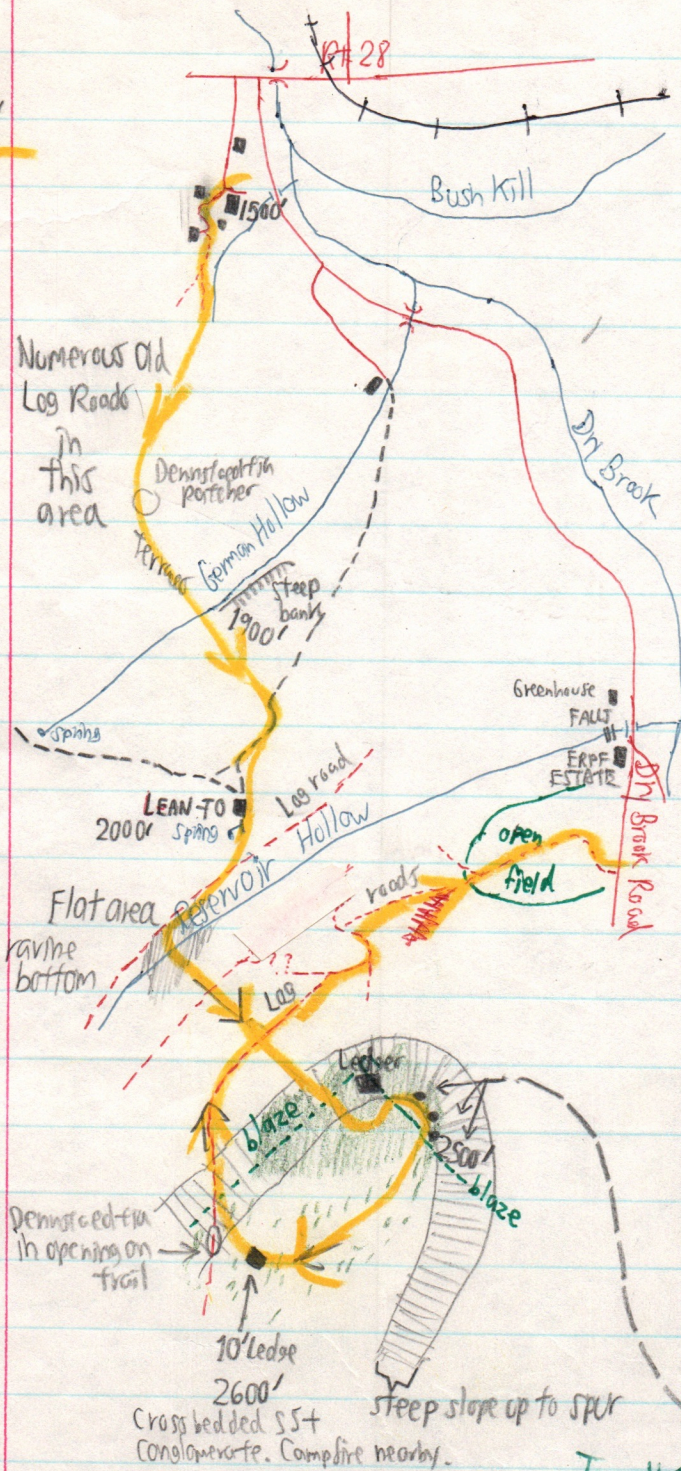


Dry Brook Ridge Hemlock Grove

6/6/72 290-9

Exploratory Route



Viola canadensis grows on better drained sites, *V. papilionacea* at springs. *V. blanda* = *pallens* grows on both, while *V. rotundifolia* is on well drained, especially on edge of trails where there is little else.

Hemlocks are concentrated on north shoulder of spur, only scattered on the top. Stand is unevenaged with DBH's up to 15 to 18". Recently cut stumps indicate ages of up to 200 years, with a release about 50 yrs ago perhaps during the acid factory cutting.

Recent logging has selected hemlock & sugar maple, but at least 3 hemlocks remain in excess of 24" DBH and perhaps up to 30" at least 300 years old. One 22" ^{cut} tree was about 200 years. 12" *Ulmus* in an MC copse.

Heavily logged areas have been fixed by Mosherwood, Mt. Maple & Yellow Birch.

Oxalis is common but scattered in patches, suggesting hemlock was always there, sugar maple not. *Clinostoma* only a few plants spotted. One patch of *Ribes fruticosa* under the largest hemlocks. The north slope, about a 35° pitch, is almost pure hemlock with almost no ground cover except for bryophytes including *Bazzania*. Hemlock reproduction is scarce. LL and *L. obscurum* common.

Tree #10