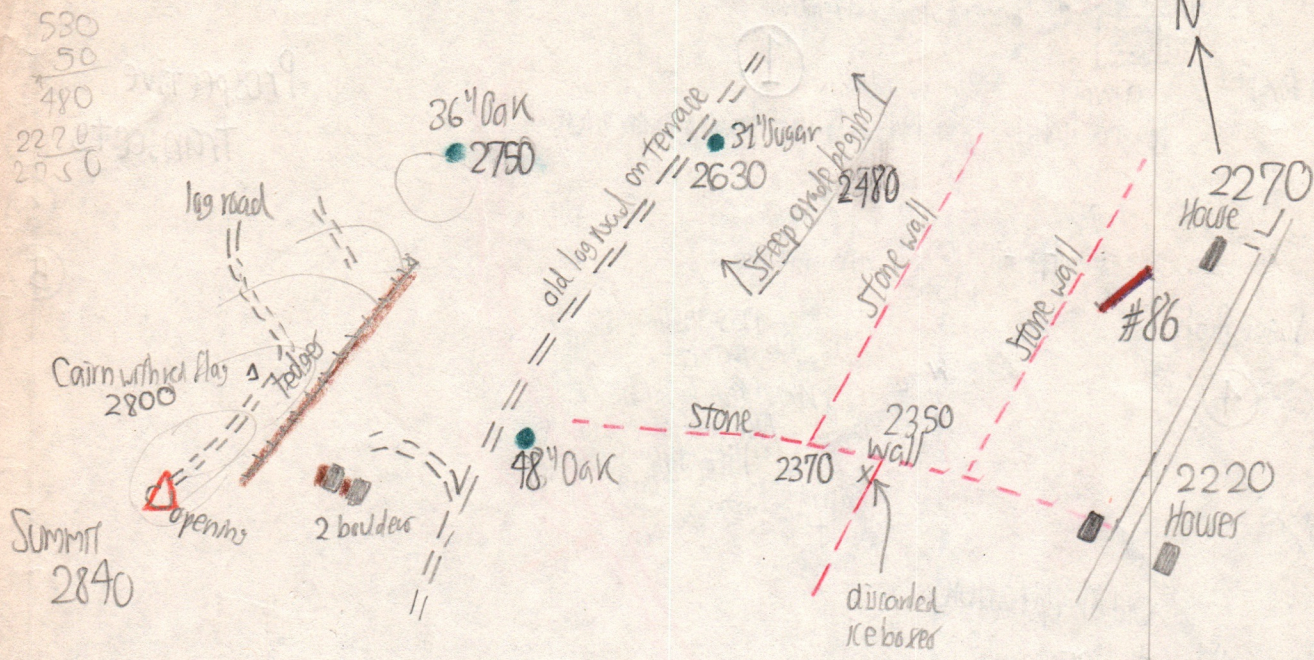


400-8 South Mtn - west spur of Halcott Mtn.

(2840 ft)

7129170



South Mtn, privately owned, has been quite recently selectively logged for large sugar oak, mostly over 12 or 18". Stumps are not decayed but have moss on them, and are probably 10-20 years old. Except for stumps & several old log roads, the forest is mostly undisturbed Sug-Oak-Ash-BC up to 50 ft with little stunting. The presence of ash on the summit was unexpected. Ground cover is rasp-berry, Chokeberry, Arisaema, blackberry, Brachyelytrum, P. albidum, Eupatorium, Polypodium, Impatiens, Hepatica, Sugar, Carex, Ostrya, Caulophyllum - slope toward sp more than ridge toward sp.

House 28.53
Summit 27.88

0.65"

2840
2270

570 ft.

$$\frac{65}{57} = 1.12 \text{ error}$$