

8/22/70

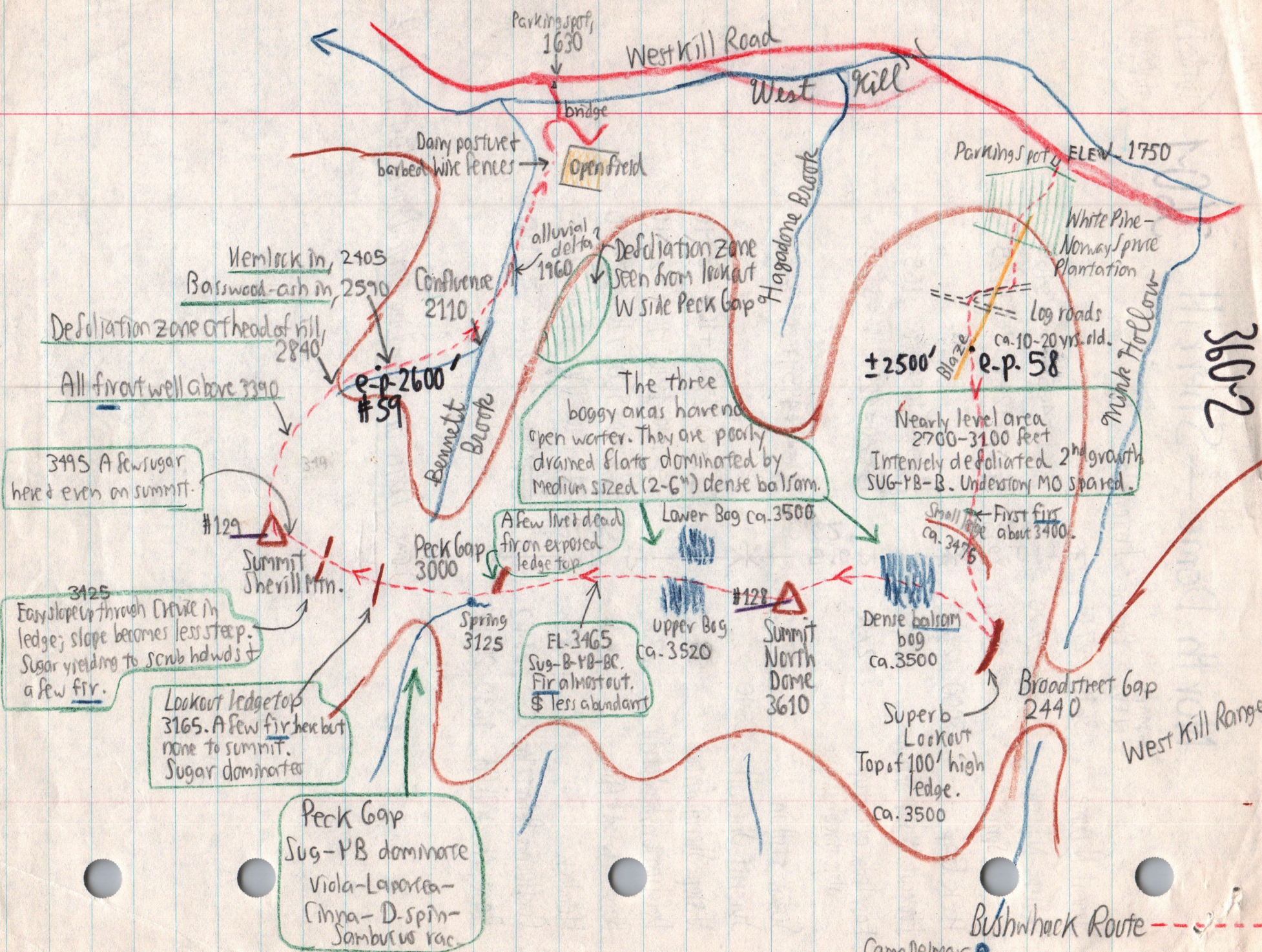
North Dome — Sherrill

360-1

With Ed
West

	MAP. ELEV	Pressure	Interpolated Elevation
Summit N. Dome	3610	27.05	
W Slope N. Dome		27.20	$\frac{19}{64} \times 610 = 465 + 3000 = 3465$
Spring		27.56	$\frac{13}{64} \times 610 = 124 + 3000 = 3125$
Peck Gap	3000	27.69	
Lookout, W slope Sherrill		27.50	$\frac{19}{62} \times 540 = 165 + 3000 = 3165$
Easy ledge ascent up slope through crevice		27.20	$\frac{49}{62} \times 540 = 425 + 3000 = 3425$
Sugar still in		27.12	$\frac{57}{62} \times 540 = 495 + 3000 = 3495$
Summit Sherrill	3540	27.07	
N slope Sherrill front		27.23	$\frac{191}{207} \times 1910 = 1760 + 1630 = 3390$
Defoliation, head of rill		27.83	$\frac{131}{207} \times 1910 = 1210 + 1630 = 2840$
Base- wood & Ash		28.10	$\frac{104}{207} \times 1910 = 960 + 1630 = 2590$
Hemlock		28.30	$\frac{84}{207} \times 1910 = 775 + 1630 = 2405$
Confluence Bennett Brook		28.62	$\frac{52}{207} \times 1910 = 480 + 1630 = 2110$
Base, West Kill Rd.	1630	29.14	

Some data on ascending North Dome lost in field.



3602