

Big Indian - Doubletop Region

8/15/70 2803

Seager

dominating
Balsam on Doubletop occurs mainly as a cap, running down about 150 below summit on the W, 50-100 on the N&E. There are pockets lower down on the E slope, especially on ledges & on wet flats.

Bazzania here under Hemlock with Oxalis

2 stations for Hylacomium widely separated.

Hollow
Laportea, Viola here
But on NW cul slope
OX-LL-VA

Ledge top: Sus, Beech, Vral, Dspm, Lonixera
Athyrium ffr, Tiarella, Hydrophyllum

2nd ledge top: Sus still domy
stunted to 40 ft. CB, OX, AA, SM
NYFEAN, VA.

Balsam come in above where sugar
ease - forest
25-30 ft.

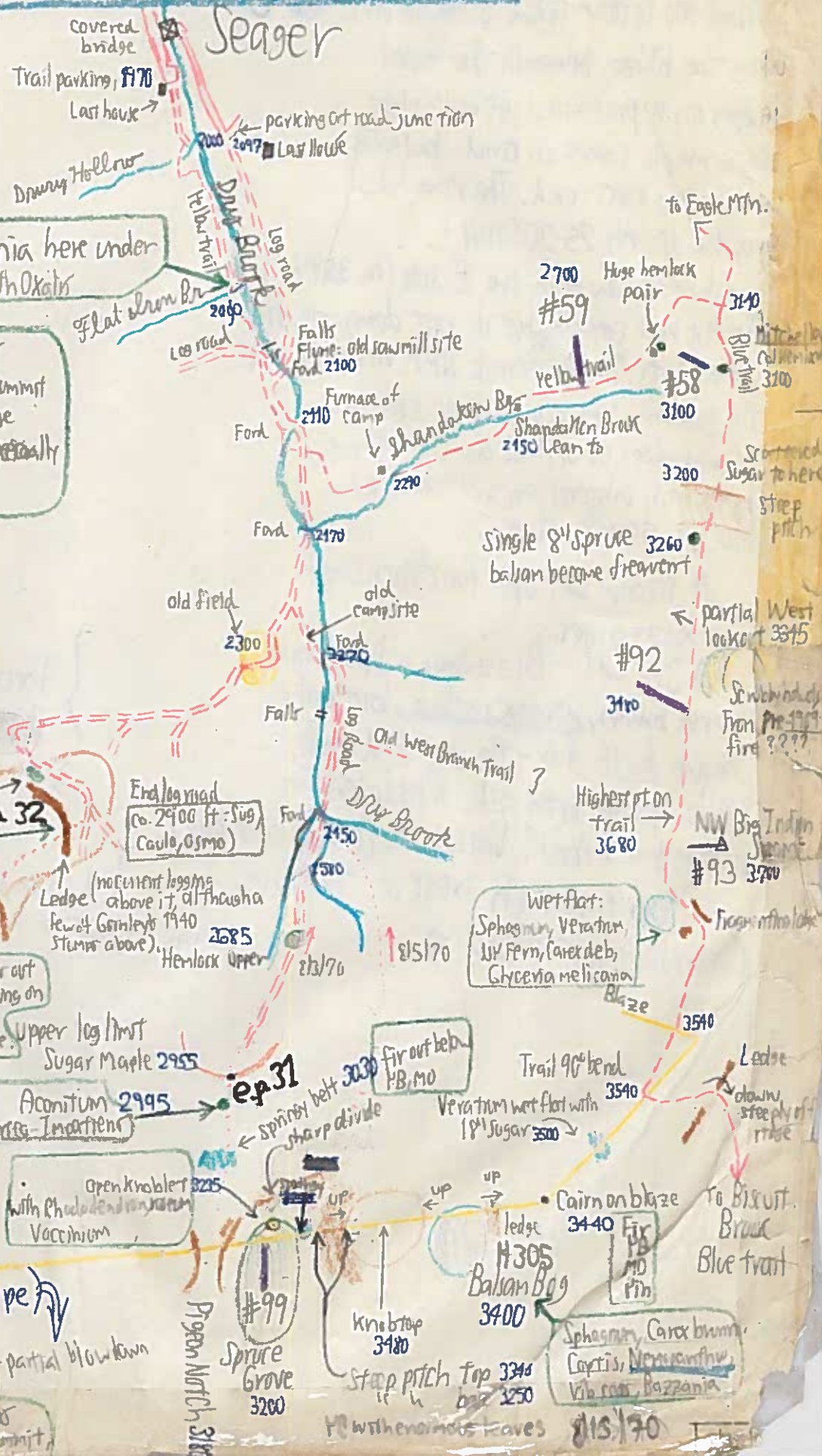
Open hemlock - fir
beams to cedars in the
Lockout to NE about
3700 ft.

3870 #98
Lockout to SW

(See over for East Slope)

Blowdown N of col.
Sphag & Uvul. incol.
Rhododendron S. of col.

Doubletop
Cornus canadensis
abundant on S summit



Upper log limit
Sugar Maple 2955

Aconitum 2995
Laportea - Impatiens

Open knoblet 325
with Rhododendron
Vaccinium

Knobtop 3480

Step pitch top 3340
fir 3250

8/15/70