

112

THE BLACKHEADS 530-3

FRIDAY, AUGUST 1, 1969

TOM PATRICK

Time	Map Elev	Pressure	Temp	Miles	Location	Time	Pressure	Temp	Miles
7:55	980	29.36	64	535.5 585.8	Home	5:25	29.30	74	
9:00	2190	27.99	68	560.25 0.00	Big Hollow Road Trail Base	4:25 4:20	27.88		7.2
				"A"	Ford				
9:47	2390	27.80		0.50	Red-Yellow Lower Trail Jc.	4:02	27.71		6.7
10:17		27.41	2705	1.05	Batavia Kill Lean-to				
10:25			2800	"D"					
10:27	2860	27.22		1.30	Yellow-blue trail Junc.				
10:42		26.88	3200	"G"	1st Yellow Jacket lookout				
10:52		26.76	3320	J	2nd " " "				
11:20				2.23	Blackhead Summit				
11:33	3940	---		"O"	LUNCH STOP				
11:48-12:16		26.34	3700	70					
12:38	3420	26.62		2.83	Red Yellow Junc. upper	3:12	26.59	71	5.5
12:45		26.45	3590	"S"	CUT-OUT lookout	3:07	26.42		
12:57		26.32	3720	"T"	Ledge natural lookout	2:55	26.32		
1:10	3980	---		3.43	Black Dome Summit	2:43 2:33	---	70	4.9
1:30	3720	26.37		"V"	COL	2:19	26.36		
1:45	3940	---		4.18	Thomas Cole Summit	1:55	---		4.1
3:12	3420	26.59		5.53	"R" Red Yellow Junc. Upper				
3:35		26.93		5.93	"Z" 1.3 mi. station to B.H. road				
3:30		27.04		"AA"	Spring				
3:40		27.42		"DD"	Trail bends N near creek				
3:52		27.48		"EE"	Ford				
4:02	2390	27.71		6.73	"B" Lower Yellow-Red Junc.				

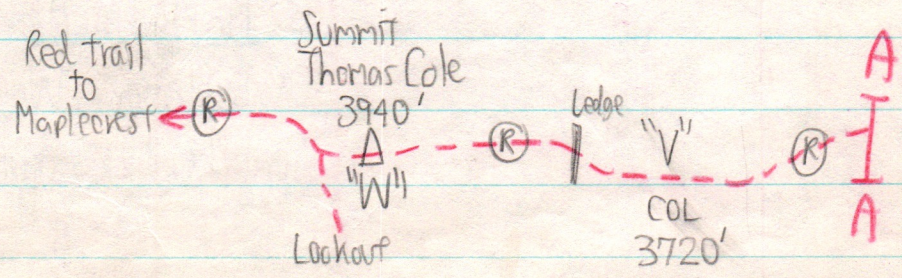
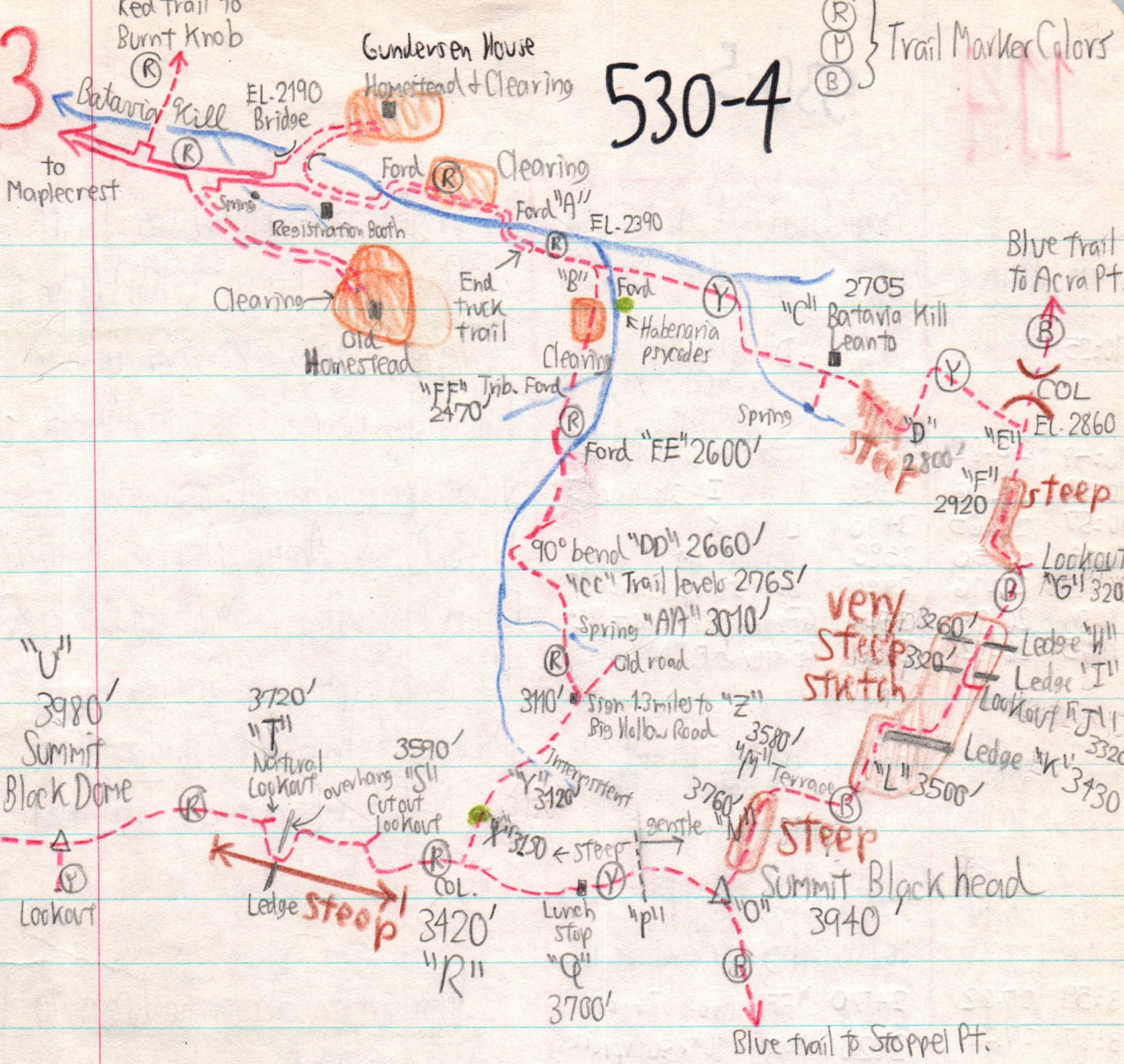
see below

--- Barometer will not indicate pressure lower than 26.30".

113

530-4

Trail Marker Colors
(R)
(P)
(B)



114

530-5

Additional Points			
Time	Pressure	Inferny Elev.	Location
10:25			"D" Trail tops steep stretch, turns NE & levels on terrace.
10:49	26-82	3260	Ledge "H" Trail inc. vice
10:52	26-76	3320	Ledge "I" J look out "J"
10:57	26-65	3430	Ledge "K"
11:04	26-50	3580	Terrace "M"
10:32	27-16	2920	Base steep grade "F"
10:59	26-58	3500	Enter BBM forest "L"
11:15	26-32	3760	Enter SE "N"
3:21	26-88	3150	"X" Scattered fir.
3:23	26-92	3120	"Y" Intermittent brook
3:25	26-93	3110	"Z" 1.3 mile sign
3:30	27-04	3010	"AA" Spring
3:38	27-30	2765	"CC" Trail levels
3:40	27-42	2660	"DD" 90° bend W to N
3:59	27-02	2470	"FF" Cross Trib.
3:37	27-24	2820	"BB" 10" x 50' spruce

Vegetation between Trail Base and Barbavia Kill Lean-to

Americ hemlock - northern hardwoods forest with commonly scattered ^{but} mostly

young spruce and fir. Hobblebush, Paper

birch, Ryola, Aralia, Aster acut & divar,

Cinna, Maianthemum, Moosewood, Clintonia.

Hylocomium splendens, Brotherella &

Dicranum fulvum below the lean to;

also Medeola & Laportea. Trees much

like Lake Placid lake shore.

Vegetation above the Lean-to

At point "D", most beech & sugar maple have dropped out, and some large

spruce have come in (2800'). The forest

from here to the trail junction "E" 2860' (Escarpment

Trail) is PB-PB-Mtn Ash-Spruce-Moosewood-fir

Oxalis, Clintonia, Wood fern, Maianthemum.

Some hemlock occur at the trail junction.

115

530-6

Northslope of Blackhead

At the lookout "G" 3200', the S-F forest still exists, but is shorter. The spruce are up to 20' DBH, some being dead.

Mtn Ash, Paper birch, Pin Cherry, Oxalis & Woodfern common.

By 3500' ("L"), the forest returns to a deciduous state with Sugar Maple, Beech, Black Cherry, PB, PB, and Mtn. Maple, the trees up to 16" x 40'. S&F are absent or rare. By 3580' ("M"), the deciduous forest has become scrubby, mostly Mtn. Maple & PB with blackberry & raspberry.

? Spruce-fir reenters at "N", 3760' and Coptis, Coma along with it. Few trees are taller than 20' from here to the summit "O" (3940')

on SE shoulder only

Summit Blackhead

Started Spruce and Fir to 20', with Mtn Ash, PB, Pin Cherry, Amelbart, and Vacc-myrt. Fir thickets are extensive while spruce is common only SE of the trail junction at the highest point; it is absent (?) westward on the summit. Dead S&F are common. Floor is Coptis, Clintonia, Maianthemum, Tuentalis, Oxalis, Aralia, Deschampsia flexuosa, Solidago macrophylla. Not many trees are blown down, those standing dead probably due to drought.

116

530-7

West slope Blackhead

This section when viewed from the lookouts on Black Dome almost ^{NO!} appears as a fire scar running up the west spur of Blackhead, east-
aming the trail.

Fir thickets give out below about 3700', where the slope steepens below to the col. This area is open scrub-primarily PB, Mtn Ash, Mtn Maple, Diervilla, Wood Fern, Omny, Solidago macro, Asteraceae, Pin cherry, Streptopus roseus, Ribes, Corylus and Amel. Bort.

Lower down near the col ^(3600') are Bromus ciliatus, Thalictrum polygonum, Laportea, Mercurium, and Athyrium filix femina. A 25' x 12" sugar maple is at 3640'.

The col between Blackhead and Black Dome is a mature sugarmaple-beech forest at 3420' ("R").

Black Dome

Cystopteris fragilis under the overhanging ledge below the lookout 3720' "T". At this lookout, the sugarmaple-beech forest stops, and fir appears with Mtn Maple & Pin Cherry. Asplenium & Draba ^(M. 10/15) also under the ledge.

The summit of Black Dome has an open canopy of fir, PB, Mtn Ash & expected ground species. Fir run to 6" x 25', some dead standing, and some blown down.

Patches of fir thickets are common in open canopy areas.

Spruce are rare; 1 sapling was seen at the overlook. (?)

117

The ^{bed} rock atop Black Dome Thomas Cole is a coarse near-white sandstone, almost a conglomerate.

530-8

Monotropa and Pohlia nutans present.

On the west slope of Black Dome, the forest is open fir-PB with much woodfern. The col to Thomas Cole is also Fir-PB-MB-Mtn Ash, with Polygonum alinode, blackberry, woodfern, large leaf goldenrod, Cornus, and Pin Cherry.

3650' west slope, between lookouts: Myrica splendens.

Thomas Cole Summit

Two spruces were observed, one 12" x 30' ^{about 50'} N of the trail W of the overlook, another 8" x 25' on the S side of the trail E of the overlook. Otherwise, the summit is predominantly fir to 12" x 25'. Balan reproduction is abundant, such thickets alternating with woodfern glade and more mature forest. PB, Mtn Ash, Pin Cherry are common. ^{one} PB gets to 12" DBH. Dead trees are abundant, mostly fir but some may be spruce. Blowdown is not a main factor.

Descent from Blackhead-Black Dome Col to Trail Base

The col is beech-sugar maple, but fir and spruce are scattered most of the way down - including the trail base area. The first fir to be encountered on the descent is at 4" x 11", 3150', one 24" x 12' tall. The first spruce

118

5309

Seen was at "BB" 2820'. Hemlock enters at just below the spring, about 2950'. Spruce and Fir are scattered, but common, the great bulk saplings or seedlings, at the 2700' area.

General Remarks and Questions:

Why is spruce rare on the Blackhead 3 summits while fir is abundant?

Why is there a S-F forest at 2900' on the escarpment N of Blackhead Peak, and on its summit, but with an intervening Beech-Sugar Maple forest at 3500'?

Why are spruce and fir absent in the Maple (Sugar)-Beech col between Blackhead & Black Dome, yet they are present well down the north slope and common in the trail base area?

Why do Thomas Cole and Black Dome resemble Slide in their vegetation, while Blackhead has so much spruce just SE of its summit?