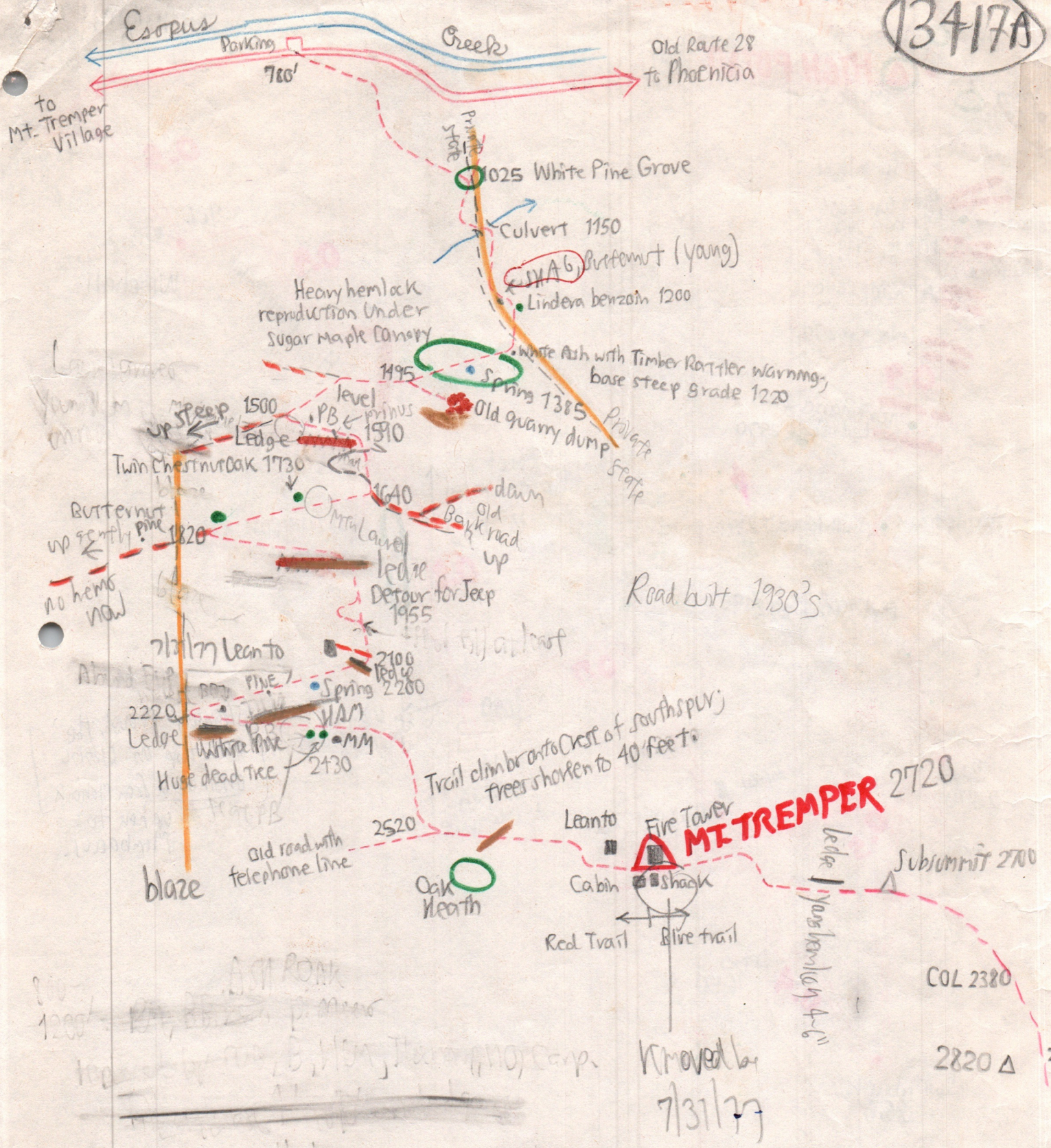


TRAIL PLAN: MT. TREMPER

1969 134-17A

(13417A)



810-1200' - ~~By 2-2-77 p.m.~~

100 - ~~By 2-2-77 p.m.~~

By 2-2-77 p.m.

By 2-2-77 p.m.

By 2-2-77 p.m.

55

MT. TREMPER

134-1

MONDAY, JULY 14, 1969

TIME	MAP ELEV	PRESSURE	INTERP. ELEV	TEMP.	LOCATION	TIME	PRESSURE	INTERP. ELEV.	TEMP.	MILES
9:10	890	29.23		68	Deer Haven	2:28	29.22	77	77	878.4 884.8
9:23	780	29.36		69	Trail Base	2:16	29.38	77	74	881.4 886
9:32		29.12	1020		A JUNC. OLD TRAIL	2:08	29.13	1030		
9:37		29.01	1130		B CULVERT & BROOK	2:05	28.99	1170		
9:42	1220	28.92			C TRAIL TURNS STEEPLY	2:02	28.90			
9:51		28.74	1400		D SPRING (LOWER)	1:56	28.75	1370		0.55
9:55		28.64	1500		E ROCK PILE ROAD	1:50	28.63	1490		
10:00	1500	28.64			F FIRST SWITCHBACK	1:45	28.64			
10:07		28.55	1590		G TRAIL SKIATS LEDGE	1:40	28.55	1590		
10:10	1640	28.49			H SECOND SWITCHBACK	1:37	28.50			
10:18	1820	28.23			I THIRD SWITCHBACK	1:28	28.26			
10:23		28.14	1910		J TRAIL ON TERRACE					
10:25		28.09	1960		K SHORT CUT	1:20	28.13	1950		
10:29	2100	27.95			L WATER CRESS BEND	1:13	27.97			
10:33	2200	27.82			M SPRING (UPPER)	1:11	27.84			1.35
10:35		27.80	2220		N FOURTH SWITCHBACK	1:07	27.82	2220		
10:48	2520	27.48	2540		O TRAIL LEVELS ON RIDGE	12:45	27.47	25		
10:57		27.46	2700		LEAN-TO	12:31				2.10
10:58	2720			66	FIRE TOWER	12:30	27.46		64	2.15

Additional Locations

9:40	28.94	1200			1/2 <u>Lindera benzoin</u>					
					Huge Dead Tree	12:53	27.63	2430		
					7 <u>Chestnut Oak</u>	1:33	28.37	1730		

56

13A-2

TREES AND SHRUBS

- "Southern" species: ^{Campinus: some below 1025' and 6" DBH} 1 Betula lenta: opp Paper Birch at about 1720'. Common below 1200'. At 1385'.
 2 Lindera benzoin: 1200' N side of trail.
 2 Quercus borealis maxima:
 3 Quercus prinus (= montana): EL 1730, W side of trail, 2 10" DBH with same roots; ALSO EL 1550 W side trail.
 4 Tilia americana: Saplings EL 1820;
 4 Carya ovata: 1800' near Butternut, as a trail marker. Occasional below 1200'.
 4 Hamamelis virginiana: Common or occasional all the way up, especially below.
 5 Viburnum acerifolium: "I",
 6 Kalmia latifolia: "F" EL 1500, E side of trail; EL 1720 E side of trail. 1900'.
 6 Ostrya virginiana: 1700' (10-12); 1720' opposite the paper birch.
Juglans cinerea - one tree at 1800', W side of trail just below "I"

Paper Birch: On top of rock pile at 1500 feet; 2 just below the 1730' Chestnut Oak on W side of trail with 8" DBH.

White Pine: Grove at "A" 1025 feet. Single tree at about 2400 ft, E of trail.

● Mountain Maple: First observed at about 2400'.

Yellow birch: Most abundant at intermediate elevations

Ash: Common below 1200, some at 1500

Hemlock: dense reproduction under sugar maple 1250 to 1450 feet.

Common below to highest at about 2430 feet.

Lonicera canadensis: One at about 2400'.

● Sugar Maple: Abundant except on summit

Red Maple: Common on the summit.

● Beech: ^{Cambium issuing new shoots after tree cut and stumps remain, EL 950.} Common all the way up; occasional on summit; fruiting on fire tower.

Moosewood: More abundant above, comes in at about 1375'. Leaves to 12" across on saplings at ridge top.

Black Cherry: Common on the ridge top above 2500'.

2 Red Oak: Occasional, ^{to common} all the way up, but dominating the summit

above 2500 feet. Stricken by a 1/4" yellow-green caterpillar which eats the chlorophyll, leaving white areas causing a mottled leaf. [CONT.] 58

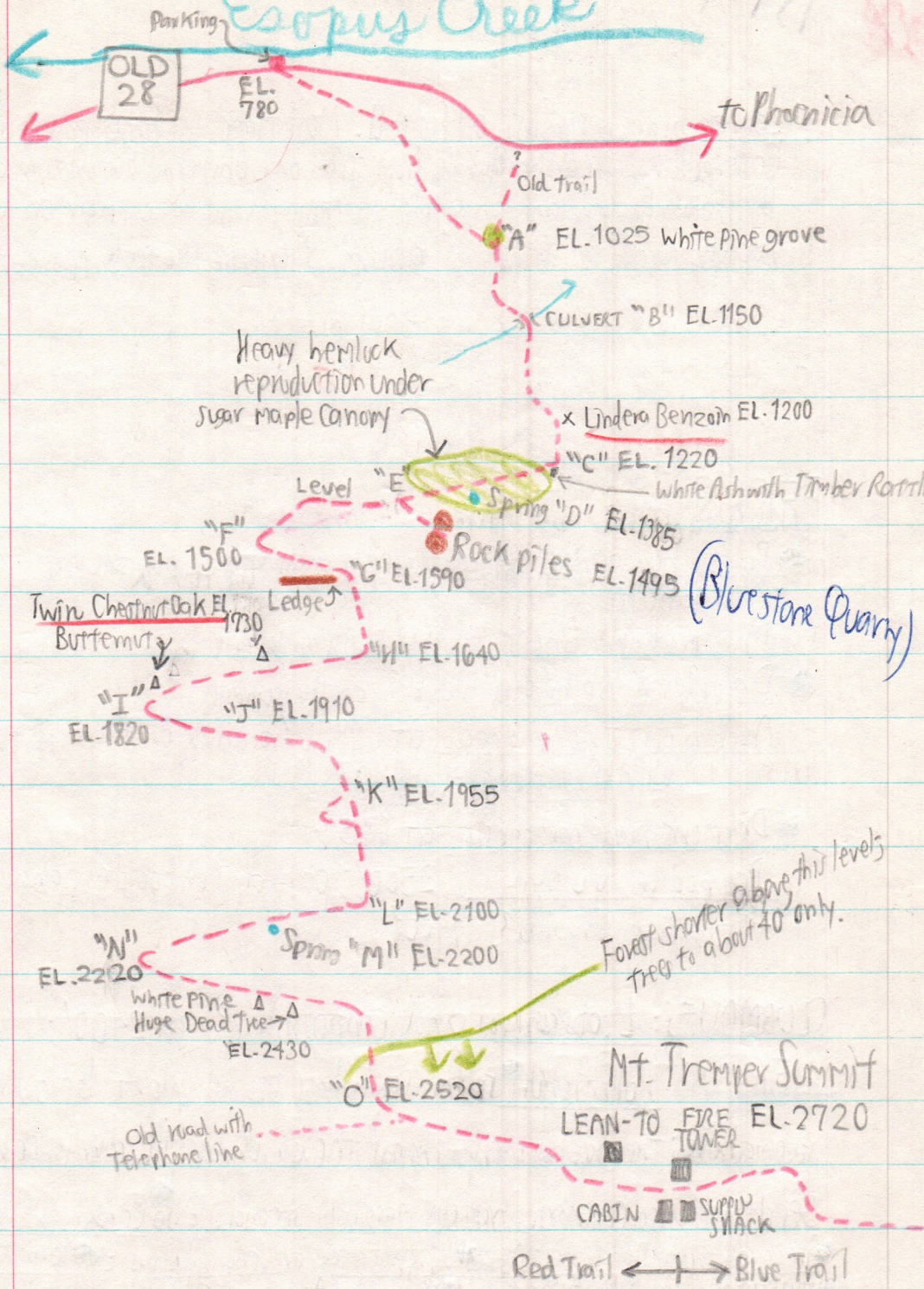
57

134-3

Esopus Creek

to Mt. Tremper Village

to Phoenicia



OLD 28

EL. 780

Old trail

"A" EL. 1025 white pine grove

CULVERT "B" EL. 1150

Heavy hemlock reproduction under sugar maple canopy

x Lindera Benzoin EL. 1200

"C" EL. 1220

White Ash with Timber Rattler warning

Level "E"

Spring "D" EL. 1385

Rock piles EL. 1495

(Blue Stone Quarry)

"F" EL. 1500

"G" EL. 1590

Twin Chestnut Oak EL. 1730
Butternut

Ledge

"H" EL. 1640

"I" EL. 1820

"J" EL. 1910

"K" EL. 1955

"L" EL. 2100

Spring "M" EL. 2200

"N" EL. 2220

White Pine
Huge Dead Tree → Δ
EL. 2430

"O" EL. 2520

Old road with Telephone line

Forest shorter above this level; trees to about 40 only.

Mt. Tremper Summit

LEAN-TO FIRE TOWER EL. 2720

CABIN ■ ■ SUPPLY SHACK

Red Trail ← | → Blue Trail

58 BA-A

Lower branches most affected. Most trees affected but not all. Caterpillars commonly dangle from trees on webs, and are blown about by the wind and land on one's clothing. Coccans appear on oak leaves and on sedges & grasses. Monocot leaves apparently not eaten.

FERNS

- Polystichum acrostichoides the commonest ground plant until about
- Dryopteris marginalis second, also to about
- Dryopteris spinulosa common on the summit
- Asplenium Trichomanes at 1900' on rock on E side of trail. With Cystopteris fragilis??
- Dryopteris noveboracensis at 1385'
- Polypodium vulgare 2500'; occasional on boulders and ledge tops.
- Cystopteris fragilis? 1900'

CLUBMOSES: L. obscurum and annatum(?) at 2400'.

HERBS: Polystichum is the commonest ground plant below 1200' and even above; the ground is quite bare though under the dense canopy. Tree

seedlings also common. Dryopteris marginalis second. Also Carex plantaginea, Brachyelytrum, Pentanther, Asper. divaricatus or cardifolius? Dennstaedtia, Arisaema, Trillium, Eupatorium rugosum, Asarum, Oxoclea.

At the Lower Spring (1385') NY Fern, Polystichum, Mitchella, Pentanther, Molanthenum. Carex bunnensis at 1495'. At 1640' Geum panicum, Ranunculus acris, Glyceria striata, Circaea alpina.

Scirpus atrovirens in the wet spot below 1200'. [Continued page 61]

59

Vaccinium ang.: one patch about 2400'; common and abundant on ridge top above 2500'.

134-5

BRYOPHYTES (rich area between points "F" and "G")

Mnium affine ciliare: common throughout

Rhytidiadelphus squarrosus: 1495', 2400'; occasional on wet rock, 2200'

Leucobryum glaucum: ~1550'; common on soil, especially lower down, 2550'

Pleurozium schreberi: ~1550';

Dicranum undulatum: ~2400'; one station seen.

Lophozia? : ~2400'

Thuidium delicatulum 2200', 1640', 1550'.

Plagiothecium denticulatum: common throughout; 1640' on wet rock

Dicranum scoparium: common throughout; 1640' on soil & rock

Brotherella terrivans: common throughout on soil and rock

Polytrichum ohioense: common throughout on soil and rock

Other Mnium (cuspidatum, penetatum): not positively identified with hand lens; could be present, but not as common as affine

Polytrichum juniperinum: 2550', E of trail

Scapania nemorosa: occasional on wet rocks above 2400'.

TREMPER SUMMIT Predominantly red oak; Commonly

beech, red maple, black cherry. Some sugar maple. ^{+PB} Moosewood

common. Floor largely bare except for scattered Moosewood

seedlings, Lonicera canadensis, Trientalis, Mitchella, Dryopteris

Sparganium, Carex debilis, Majanthemum, Cinna latifolia,

Prunus virginiana (abundant in coves), Poa alsodes

in and beyond fruit, Vaccinium. Dianthus on trail.

Trees shorten
to 40', than
below.

Peilidium and
lichens on
tree bases.

Brotherella, Plagiothecium on rock + Mnium affine ciliare
(M. cuspidatum also?) Thuidium, Scapania nemorosa, Polytrichum
ohioense, 2 or 3 small Hyphaceae, Dicranum scoparium.

There are few flies. Red trail is truck trail; blue handily wed.

60

73A-6

TREMPER PANORAMA

Balsam Cap, Friday, Cornell invisible behind Wittenberg, Slide, Giant Ledge, Panther, Balsam, Belle Ayre, West Kill, Hunter Plateau, Overlook, Twin, Indian Head, Plattkill. Sugar Loaf hidden behind Oldebark.

2 of the 3 Blackheads appear through Stony Clove.

None of the 2500-2900' hills around Tremper have coniferous summits, although Tobias has some White Pine emergent on its SW shoulder, and conifers on the W shoulder of Tice^E are also prob. pine. Oldebark has some SF on its summit, this checks out when seen from Twin.

West Kill Range has spruce-fir, although each peak succeeding west from West Kill Peak has less and less. The 4th peak has little. The ^E spur on West Kill and the SW spur of Hunter have spruce-fir, but Diamond Hollow notch steep slopes do not.

OAK-HEATH AT 2550'

On the ridge top near where the trail climbs onto it, but to the east is an oak-heath typical of dry summits of Orange Co., N.Y. Most of the trees are red oak, with some red maple. Shrubs are Moosewood, and Vaccinium ang. is the abundant ground cover. Polygonum ohioense and P. are common.

HERBS CONTINUED FROM PAGE 58:

Oxalis, Lycopodium lucidulum, and Theridaceae under hemlock at 2430'. Perhaps the only station for the first two on the trail.

The patch is just above a large dead tree on the E side of the trail

Festuca obtusa around Shortcut, EL. 1975. Thalictrum ~~sp.~~ polygamum? about 1925'. Carex brunneocens and C. plantaginea at 1495'.

Prunella and Plantago major on trail at 1800', with Hepatica and Veronica officinalis off the trail. Galium circaeazans 1900'?

Water cross Nasturtium officinale at 2100' bend "L".
Hystrix patula just below "C" on north, el. 1210.

AROUND FIRE TOWER CLEARING

Fire Tower emerges only 15' above the red oak and makes locating it difficult from other peaks. Polytrichum chinense, Dianthus compressus, Agrostis, Carex scoparia (?), Brachyelytrum erectum, Carex debilis, Festuca ovina, Dianthus, Veronica officinalis, and Vaccinium angustifolium grow in the clearing with a rain gauge.
Poa compressa on trail just below summit.