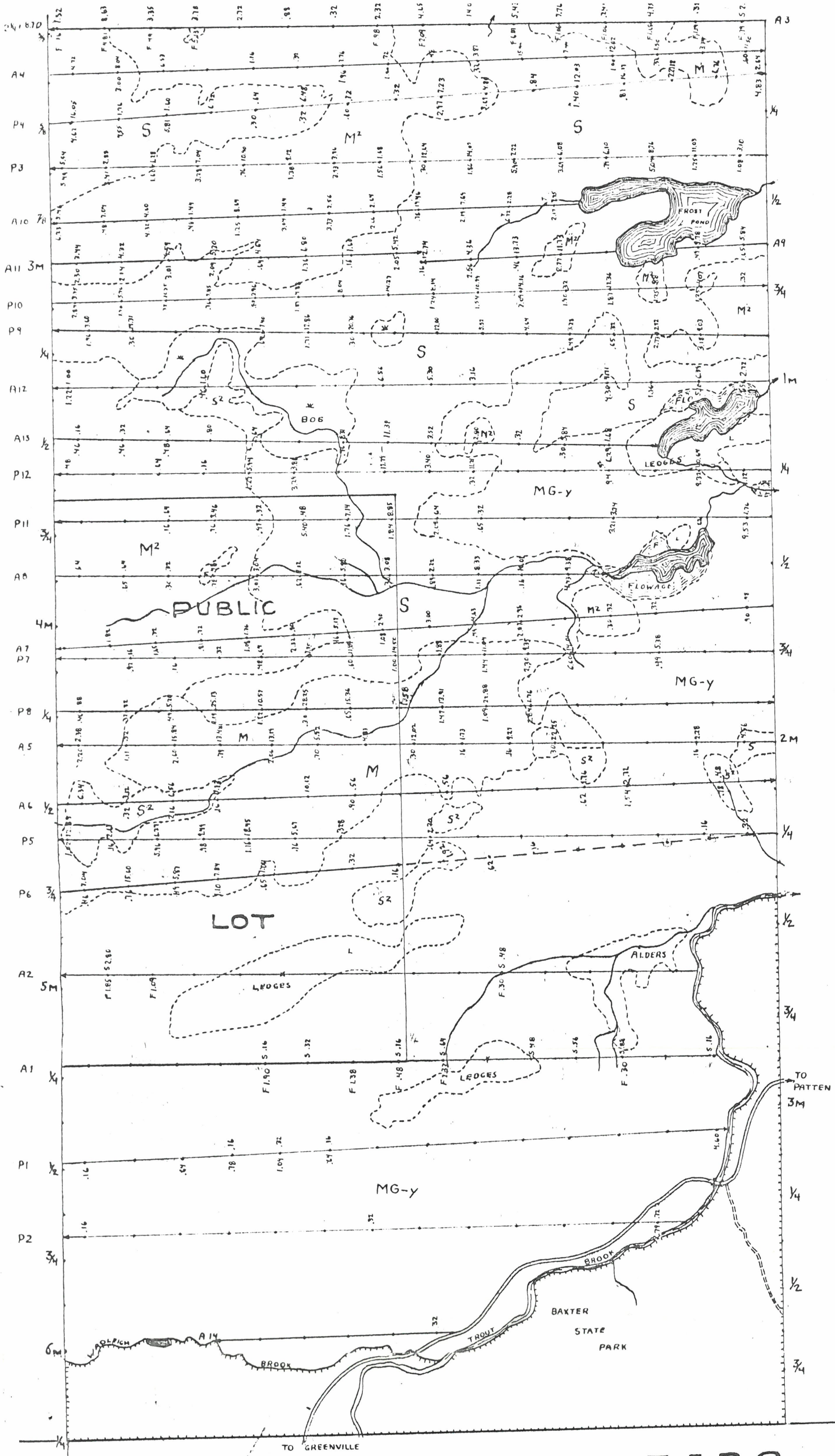


S.W. PORTION
TWP 6. R. 9 WELS.
PISCATAQUIS COUNTY, MAINE

SCALE: 1 INCH = 20 CHAINS

NOV. 23, 1955

BY: *Louis M. Powell* FOR GREAT NORTHERN PAPER Co.
Lee Armstrong FOR JAMES W. SEWALL COMPANY



T. 5 R. 9