

# Sustaining Ash Partners Network (SAP-Ne)

Rachel Swanwick, Forest Stewards Guild, NE Program Manager, [rswanwick@forestguild.org](mailto:rswanwick@forestguild.org)

## What is SAP-Ne?

Supported through the Forest Stewards Guild and USDA Forest Service Landscape Scale Restoration Program



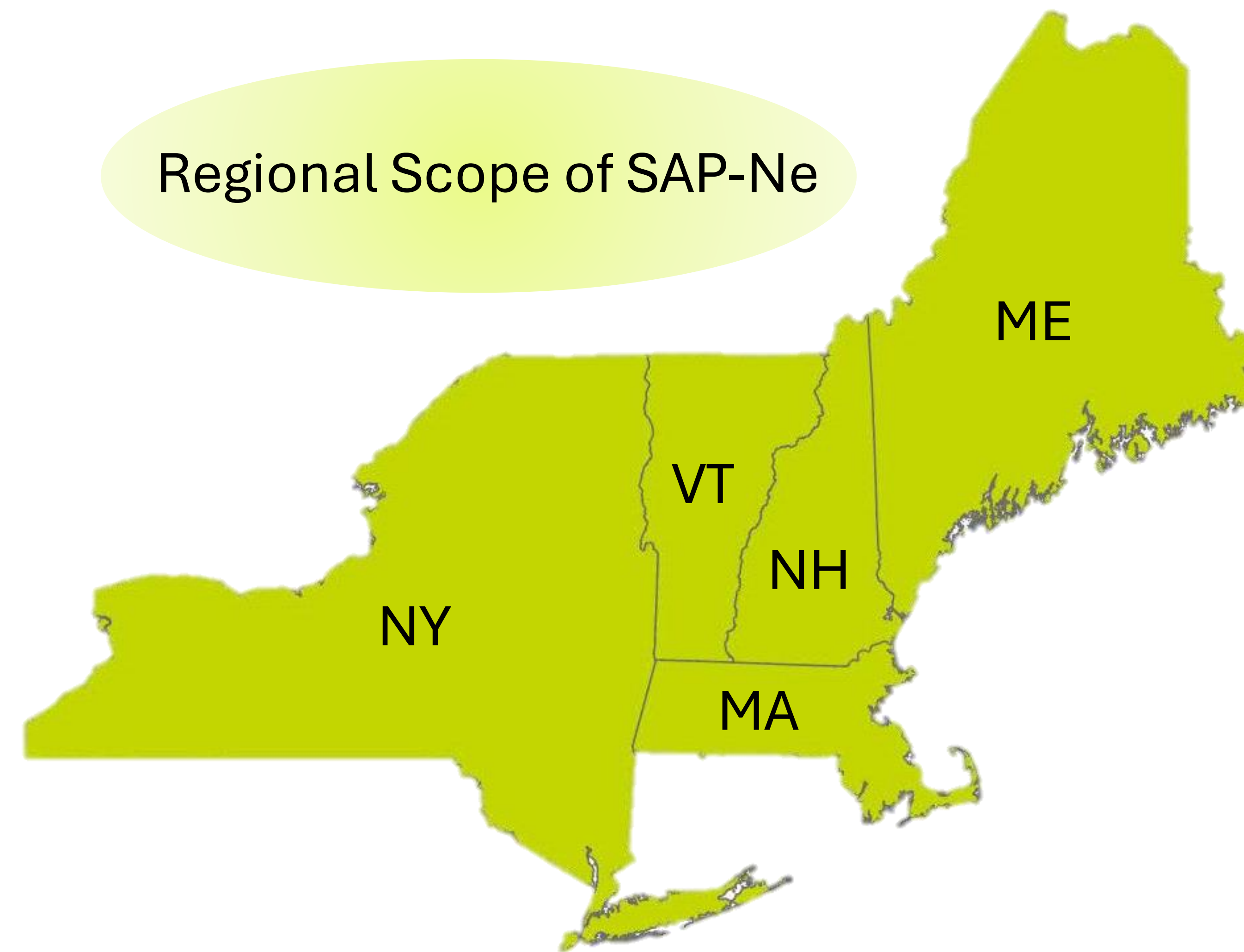
Our network was established in response to emerald ash borer (EAB) that threatens to eliminate ash from Northeastern forests



SAP-Ne supports a cross boundary regional approach to EAB through training, treatment and outreach- to sustain ash on the landscape for future generations



## Regional Scope of SAP-Ne



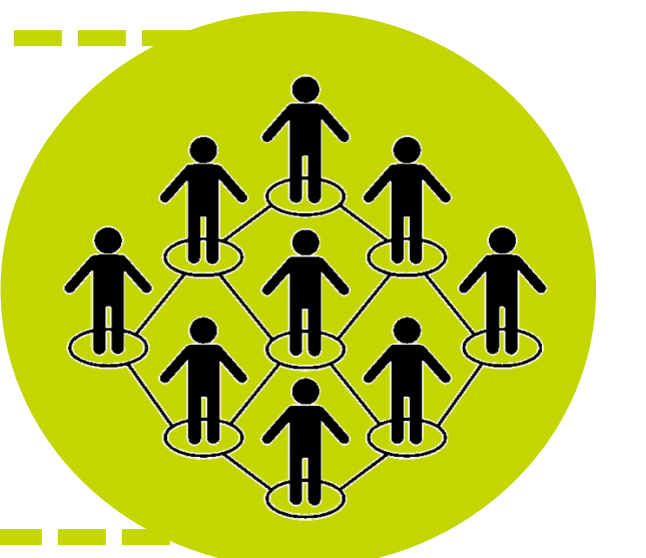
Including the sovereign lands of federally recognized Tribal Nations throughout the region

## Who is SAP-Ne?

A growing network of partners!

SAP-Ne is led in collaboration with the Guild and our partners

Check out some of the network...



## SAP-Ne Objectives

1. Elevate cultural values of ash and relationships with Tribal partners



2. Offer workshops and webinars



3. Establish a network of ash treatment demonstration areas



4. Develop a web hub of resources on ash



Want to learn more and get involved?

Visit  
SAP-Ne's website!



Forest Stewards  
Guild

