

Perinatal Quality Collaborative Vermont

Birth Certificate Quality Improvement Initiative

Kickoff Call

June 10

12:00-1:00PM



Perinatal Quality Collaborative-Vermont

Mission: Optimizing care and health outcomes in pregnancy and infancy through collaboration and continuous quality improvement.

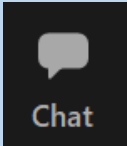
Goal: The PQC-VT will improve care and health outcomes of pregnant people and infants in Vermont through the following initiatives:

- Set Perinatal health Outcome Priorities
- Provide Outreach and Education
- Advance Quality Improvement Efforts
- Monitor Pregnancy and Newborn Health Outcomes

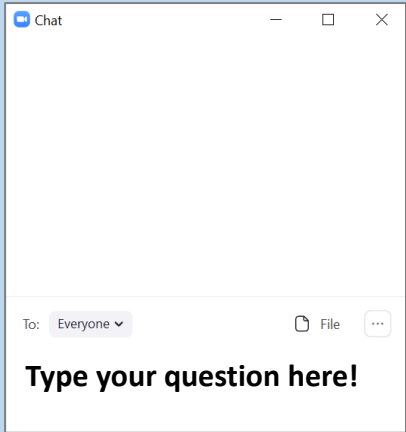


Housekeeping

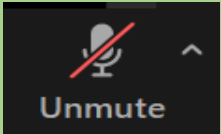
Chat



Use the *Chat* box to ask a question.

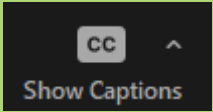


Microphone



You will be muted when you join. If you wish to verbally ask your question during the Q&A portion of the presentation, please unmute your microphone.

Captioning



Click *Show Captions* from your navigation bar to view automated captions.

Evaluation

Before leaving the event, please complete the evaluation by copying and pasting the link provided in the *Chat* into a browser or scan the QR code Thank you!

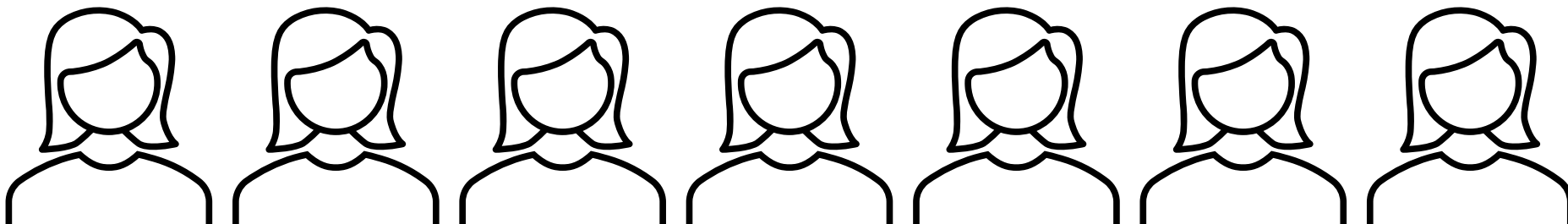


Agenda





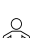






- Welcome
- Initiative overview
- Birth certificate variables in review
- Highlights from hospital process mapping visits
- Baseline data collection
- Learning tools and training
- Important dates
- Questions

BCQII Team

- **Breena Holmes**, MD, Faculty Lead, University of Vermont Larner College of Medicine
- **Ilisa Stalberg**, MSS, MLSP Family and Child Health Director, Vermont Department of Health
- **Katy Leffel**, RN, BSN, IBCLC, Perinatal Nurse Coordinator, Vermont Department of Health
- **Cynthia Hooley**, Vital Statistics Information Manager, Vermont Department of Health
- **Peggy Brozicevic**, Research and Statistics Chief, Vermont Department of Health
- **Julie Parent**, MPH, MSW, Perinatal Project Director/QI Coach, University of Vermont Larner College of Medicine
- **Angela Zinno**, MA, Project Coordinator, University of Vermont Larner College of Medicine



Collaborators – It's all about Partnerships

-  Brattleboro Memorial Hospital
-  Central Vermont Medical Center
-  Copley Hospital
-  Gifford Medical Center
-  North Country Hospital
-  Northeastern Vermont Regional Hospital
-  Northwestern Medical Center
-  Porter Medical Center
-  Rutland Regional Medical Center
-  Southwestern Vermont Medical Center
-  University of Vermont Medical Center



A black and white photograph of a vintage mechanical calculator, likely a Comptometer. A hand is shown operating the keys, which are numbered 0 through 9. The calculator has a series of vertical columns for digits and a row of keys for arithmetic operations. The background is dark and out of focus.

Vermont's Birth Certificate Data

Birth Certificate Data

- Collects more than 100 Pieces of information on Vermont's pregnant people and babies
- Birth certificate staff are the front line in assuring accurate birth data and are a vital part of the health care team
- Information used by local, state and national partners
- Consistent source of health information on all Vermont babies and new mothers
- Reflects your hospital's performance and adherence to best practices in perinatal care

PQC-VT and Birth Certificate Data

- The Birth Certificate Data informs the PQC-VT and other Quality Improvement (QI) activities across the state

Evaluation and Report of Perinatal Statistics for Vermont Community Hospitals

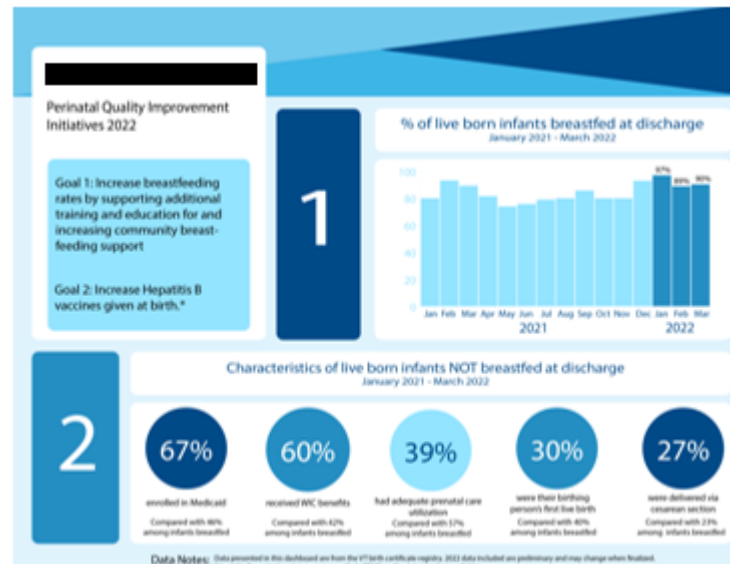
2023

DRAFT March 2024

THE HOSPITAL DATA IN THIS REPORT IS CONFIDENTIAL. PQC-VT will not relinquish to other parties individual data except that as might be reported in scientific meetings or published in professional journals. In such situations individual identity or identity of the hospital will not be revealed by PQC-VT.

Faculty Copy

PREPARED BY:
THE VERMONT PERINATAL QUALITY COLLABORATIVE (PQC-VT)



PQC-VT Perinatal Public Health Summary Report of Births in Vermont

2017-2021

DRAFT May 2022

PREPARED BY:
C. Mercier, MD
C. McBride, PhD
J. Parent, MSW
A. Zinno, MA
A. Rasmussen

THE VERMONT PERINATAL QUALITY COLLABORATIVE (PQC-VT)

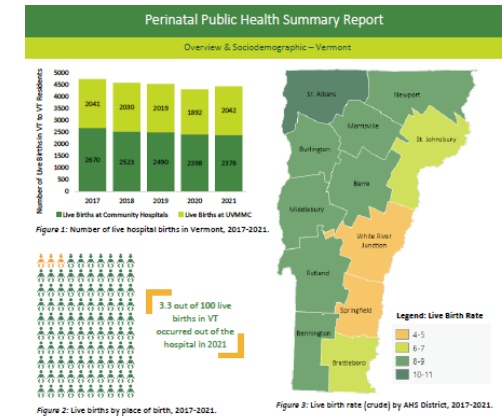


Table 1. Characteristics and health behaviors of pregnant persons, 2017-2021.

	2017	2018	2019	2020	2021	Mean
Education						
HS or less	32.6%	31.7%	31.2%	31.7%	27.3%	30.9%
Some college	17.8%	18.2%	18.6%	18.0%	17.1%	18.0%
College or more	50.5%	51.0%	51.4%	51.1%	56.6%	52.1%
Age						
< 20 years	3.7%	3.5%	3.1%	2.9%	2.6%	3.2%
20-29 years	48.2%	44.7%	44.2%	42.4%	38.3%	43.2%
30-39 years	43.3%	50.4%	50.3%	52.2%	56.7%	51.7%
40 or more years	3.3%	3.1%	3.0%	3.9%	3.9%	3.6%



PQC-VT and Birth Certificate Data

- VDH/FCH use for grant funding opportunities
 - Enhancing Reviews and Surveillance to Eliminate Maternal Morality (ERS MM), Centers for Disease Control and Prevention (CDC) funding
 - Women, Infants and Children (WIC) supplemental nutrition program
 - Perinatal Quality Collaborative Capacity Building, CDC funding
 - Maternal Health Innovation (MHI), Health Resource and Services Administration (HRSA)
 - And more!

What we have learned from our visits with you!

- Data entry process varies at each facility
- Quality assurance/audit process varies at each facility
- Parent and Facility worksheets have been modified to meet the needs of the hospital specific data entry processes
- Challenges with completing the data entry as the answers are not always available/integrated in the Electronic Health Records (EHR)



It takes a Village...

Health Information Management (HIM) chart analysts, OB providers, Pediatric providers, Certified Nurse Midwives, Registered Nurses, Licensed Nursing Assistants,...

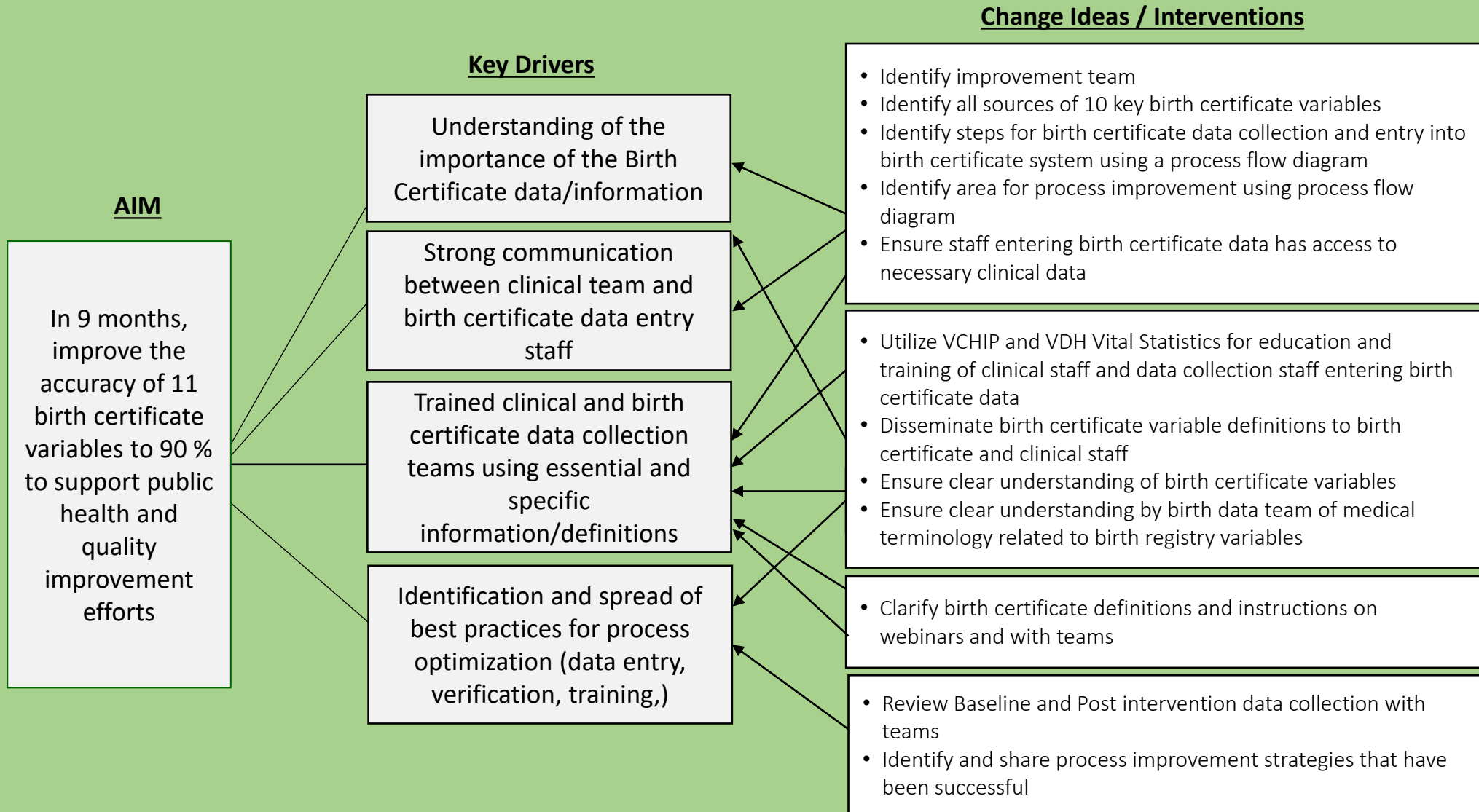
Your Feedback so far (keep it coming)...

- Recommend updating language on the Parent and Facility worksheets
- Enhance communication between clinical and health information management staff
- Provide training/educational opportunities for team to clarify definitions and medical terminology
- Need an overall appreciation of the role of birth certificate HIM staff
- Provide additional informative tools e.g., internal reference guide, etc.

BCQI - Initiative Goals

- To improve the accuracy of 11 birth certificate variables to support public health and quality improvement efforts.
- To learn and share with each others birth certificate data entry processes that have proven successful with increasing accuracy and timeliness.
- To develop educational materials for sustained birth certificate data training for new hospital staff.

Birth Certificate Quality Improvement Initiative



BCQI-Initiative Approach

- Calls, Training and QI process
 - Virtual Learning Series Calls (3 to 4 additional calls)
 - Learning tools and shared learning to support training efforts
 - Availability of Optional Office Hours to discuss educational team needs, etc. (The First Wednesday of every month, 1-2PM)

BCQI-Initiative Key Team Members

- Hospitals will need to designate a:
 - Clinical Lead
 - Birth Certificate Health Information Management (HIM) Lead
- The 2 Lead designees will:
 - Need to know best reliable data sources for the 11 key data variables
 - Be knowledgeable in perinatal, maternal and newborn health care.

BCQI-Initiative Key Team Members Roles

- Clinical Lead Roles:
 - Communicate with clinical team on issues of reporting in the medical record
 - Participate in Learning Series Virtual Calls
- Birth Certificate HIM Lead Roles:
 - Organize and encourage all personnel who complete birth certificates to participate in BCQI efforts

BCQI-Initiative Data Reporting Approach

Limited QI data collection on hospital teams to avoid adding to the burden of data collection



BCQI-Initiative Data Reporting Approach

Phase 1: Baseline data collection

- Retrospective chart review of 6-months of data, July to December 2023
- Data collected as monthly counts

Phase 2: Post-intervention data collection

- Chart review of 6-months of data, post-QI intervention

Phase 3: QI maintenance data collection

- Chart review of 6-months of data 3 years post-intervention

BCQI-Initiative 11 Selected Indicators

Variable Name	Variable Label	Rationale for Inclusion
PHYPE	Pre-pregnancy hypertension	Clinical relevance
GHYPE	Gestational hypertension/preeclampsia	Clinical relevance
PDAIB	Pre-pregnancy diabetes	Clinical relevance
GDIAB	Gestational diabetes	Clinical relevance
BFED	Breastfeeding	Clinical / Public Health relevance
AVEN1	Assisted ventilation after delivery	Clinical relevance
NICU	NICU admission	Clinical relevance
PROM	Premature rupture of membranes	Clinical relevance
PAYER	Payer	Public Health relevance
IND	Induction of labor	Clinical relevance
IT	Infant transferred <24 hours	Balancing measure

BCQI – Initiative Analysis Measures

1. Percent agreement between chart review and BC data counts by:
 - Variable
 - Month
 - Hospital
2. Percent change between baseline and post-intervention
3. Percent change between baseline and maintenance
4. Percent change between post-intervention and maintenance

What are hospital teams asked to do?

- Identify and work on at least one issue to improve
- Identify an internal audit process for data
- Participate in the virtual Learning Series Calls (3-4 opportunities)

What are hospitals going to get from it?

- Birth certificate training materials and tools
- PQC-VT team available to you for consultation and assistance
- Improved birth certificate data accuracy and precision at your hospital
- Improved birth certificate data accuracy to support the health of birthing people and newborns



United States: c. 1940 An operator entering data

Photo Credit: Underwood Archives, Inc / Alamy Stock Photo

Birth Certificate Quality Improvement Initiative Learning Series



Partnering across departments
to improve accuracy of
11 key variables

September 9, 2024

12:00 – 1:00 p.m.

Join with the same Zoom link

A calendar invite will be
shared with you

Please register if you have
not done so already,

<https://go.uvm.edu/mjq5s>

Learning Series Virtual Call Schedule

June 10, 2024 12:00-1:00 p.m.	Why is the birth certificate important to birthing people, newborns, and your hospital?
September 9, 2024 12:00-1:00 p.m.	Partnering across departments to improve accuracy of 11 key variables
October 7, 2024 12:00-1:00 p.m.	Tools to improve reporting accuracy of 11 key variables
November 4, 2024 12:00-1:00 p.m.	Identify and spread best practices for data collection: Verification and Training

This education opportunity is intended for Vermont Hospital teams involved in birth certificate data collection.



Comments? Compliments? Questions?

Please take a few moments to complete the evaluation.

Thank you!

<https://go.uvm.edu/1rykq>

or



Scan QR code