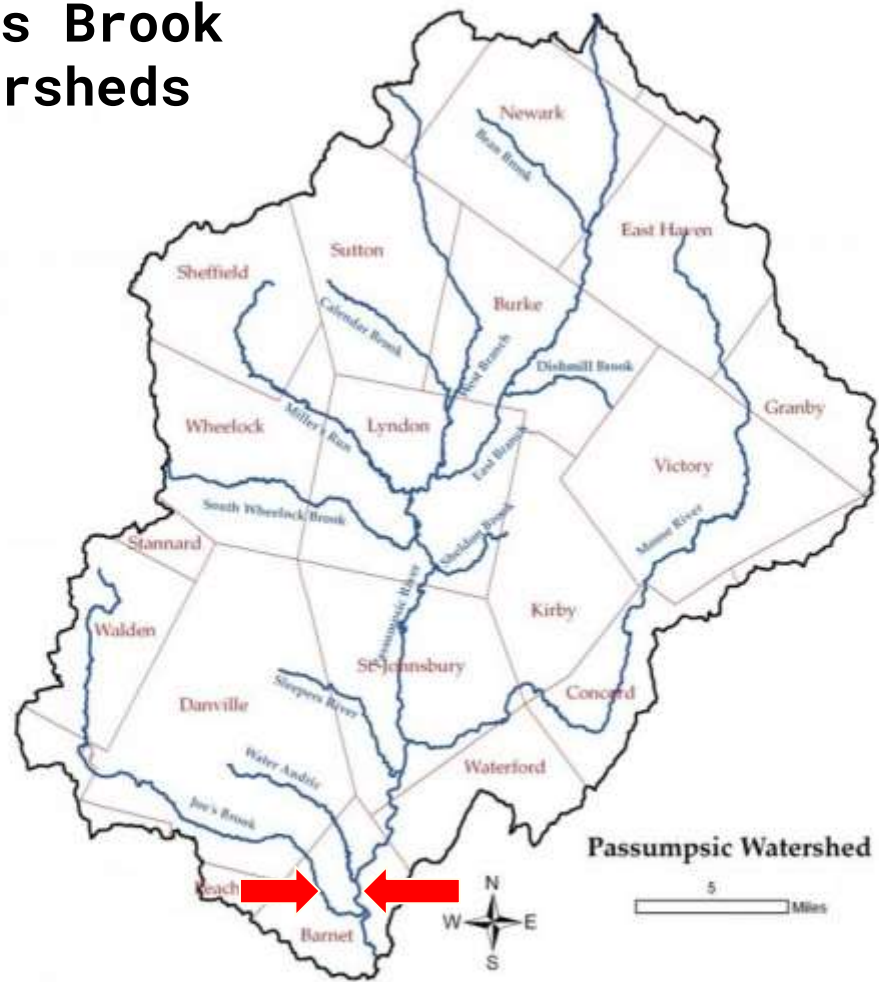


Flooded in July: what we did what we learned





Passumpsic and Joe's Brook watersheds





Two locations
flood, all row
crop acreage.

All infrastructure
is above
floodplain except
for some tunnels

We experience
ponding,
inundation, and
secondary channels

Seem to gain some,
lose some soil.

Erosion and
aggregate
deposition are not
major problems
(yet)

Real time and historical data:
<https://water.noaa.gov/gauges/pasv1>

Recent Crests

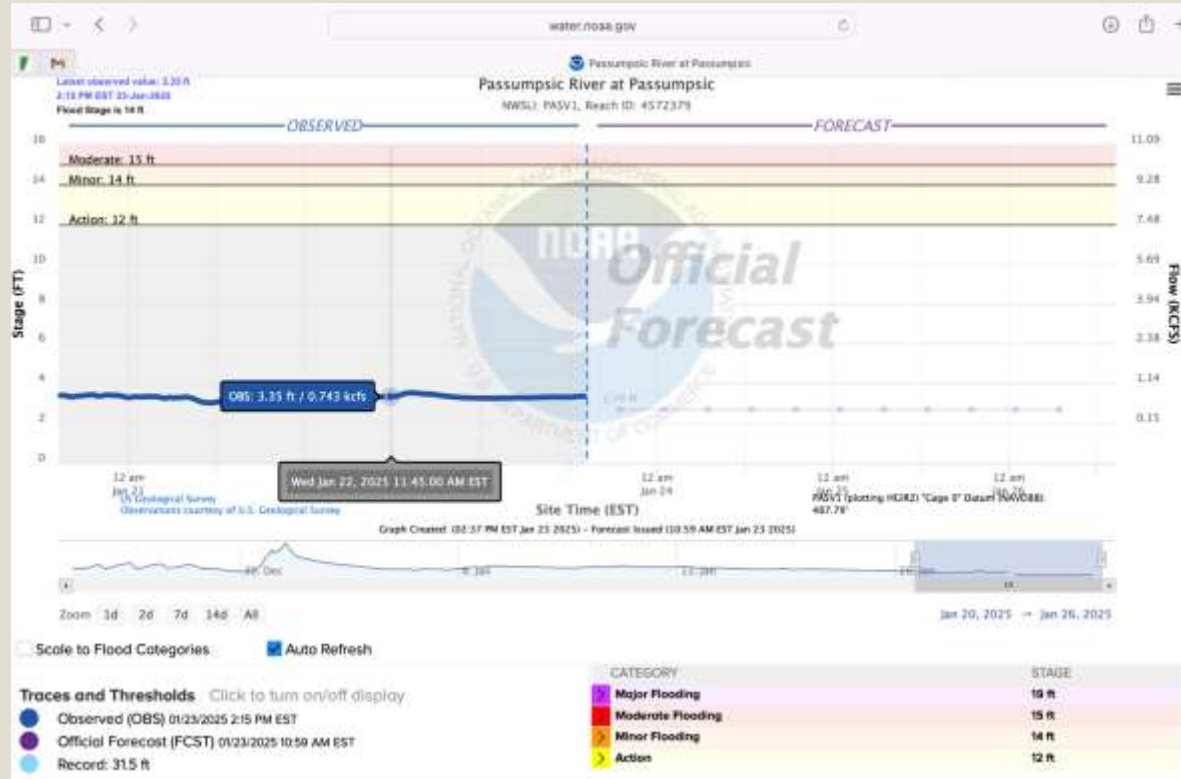
1. 16.40 ft on 07-30-2024
(P)
2. 21.30 ft on 07-11-2024
(P)
3. 16.29 ft on 12-19-2023
(P)
4. 13.67 ft on 07-11-2023
5. 17.25 ft on 04-21-2019

Historic Crests

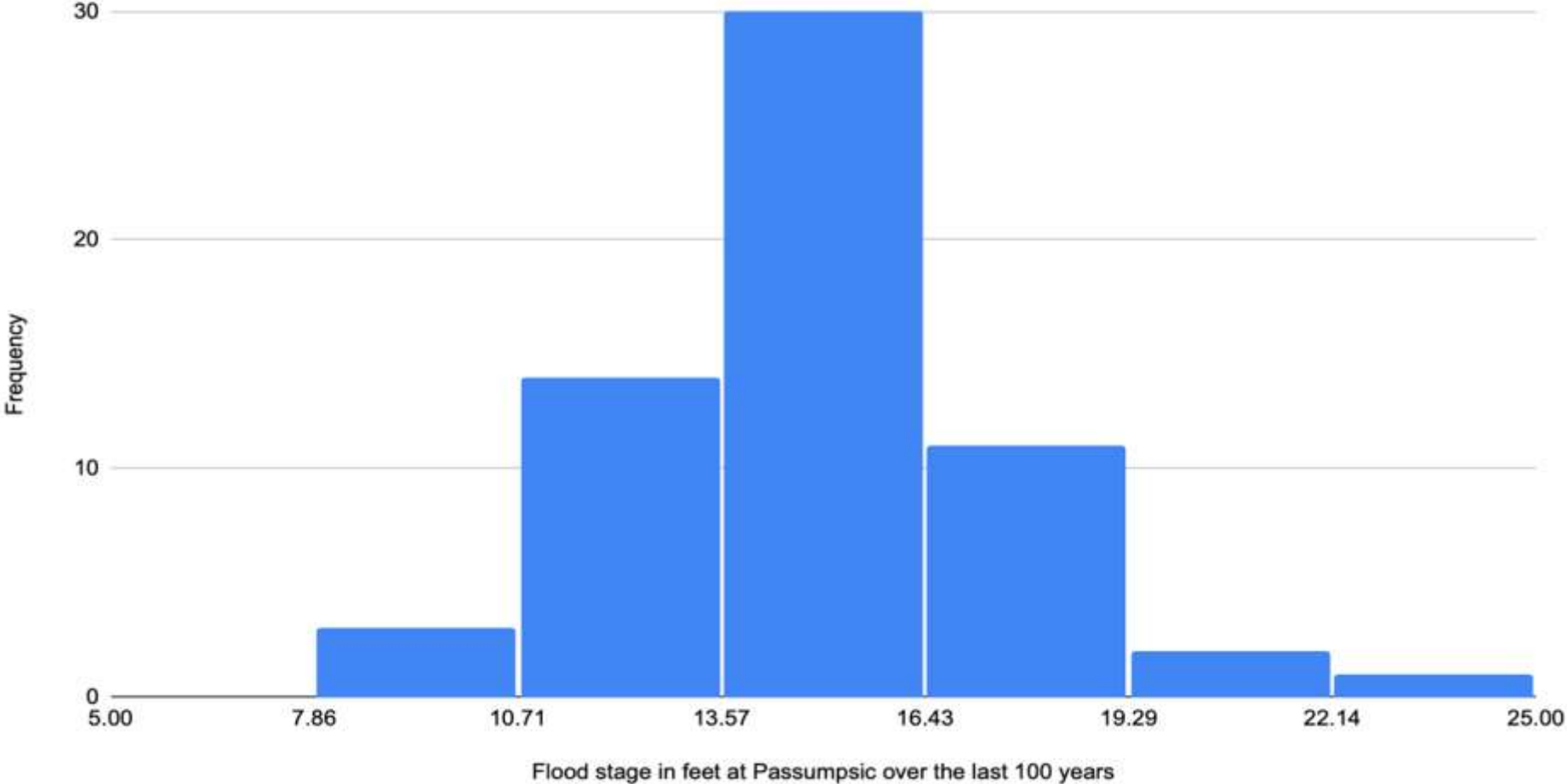
1. 31.50 ft on 11-04-1927
2. 23.49 ft on 07-01-1973
3. 21.30 ft on 07-11-2024
(P)
4. 21.23 ft on 03-18-1936
5. 19.28 ft on 06-13-2002

Other:

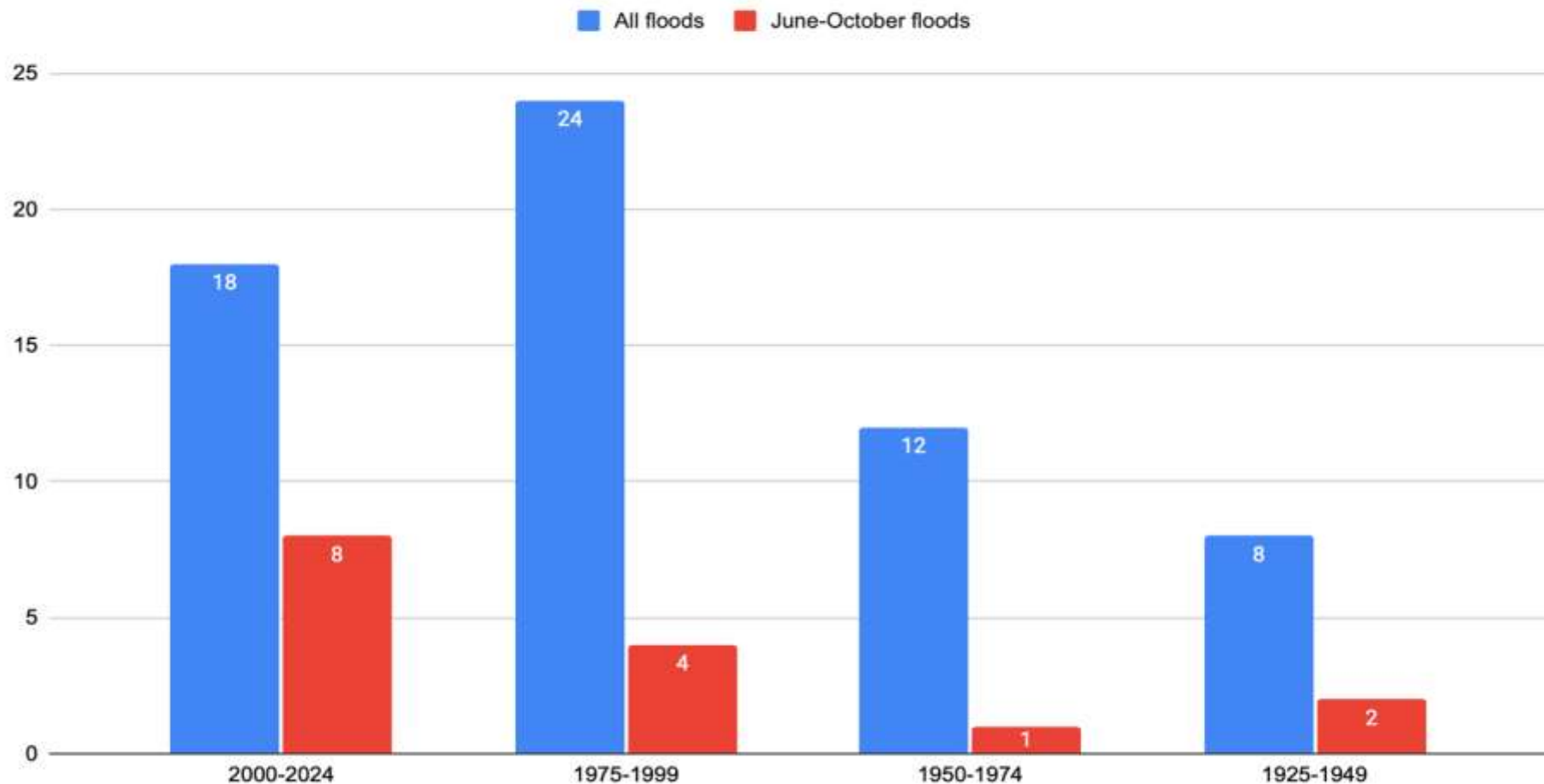
- 10 floods since we started in 2009. From 2012-2022 just two April floods
- Flood clusters (3 in 2011, current stretch 13 in the



Flood level and frequency at Passumpsic 1927-2024



All Passumpsic River floods and June-October floods at Passumpsic over the last 100 years, 25 year comparisons.
Source <https://water.noaa.gov/gauges/pasv1>



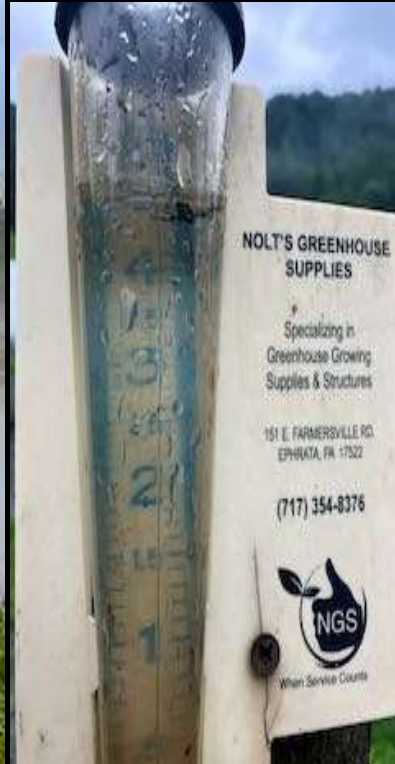
On July 11th we had

- 10 acres planted, 2 acres prepped for planting, 5 acres in cover/moving toward
- 18,000 sq ft of floodplain high tunnels and 5,000 sq ft out of the floodplain
- 3 H2A, 3 HS/college, 2.25 season long employees
- 120 CSA members, 2 farmers markets, farmstand, local wholesale, Deep Root, ect.



On July 11th. . .

8.5 acres of veg and 1.5 acres of strawberries for 2025 went under. Water rose the whole day.



After July 11th. . .



What happened next

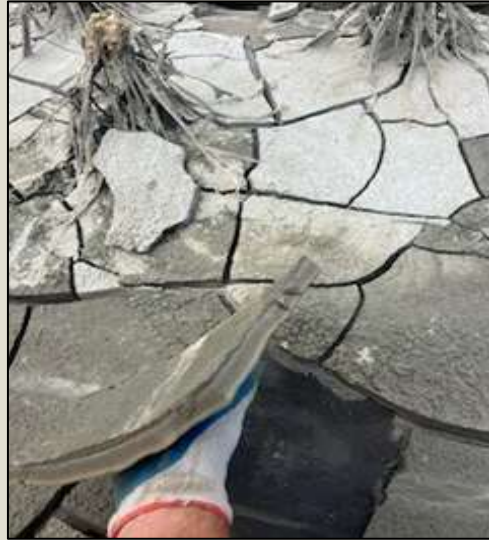
- Cash flow uncertainty, B-GAP? FEMA? NOFA emergency, cash flow modeling
- Highly visible loss, friend set up a successful Go Fund Me
- Continued CSA, dropped one market. Straight tomatoes for 4 weeks
- Should have bought in more product for the farmstand immediately
- Deciding what to save/recover, how much/if to replant/keep planting is HARD
- Keeping the crew on and busy is also HARD



Clean up



Clean up and replanting



July 16 planted carrots



Recovery

- Family recovery ongoing.
Loss of innocence,
absence of routine,
uncertainty
- Replanting is so much easier
than rebuilding
- Resiliency planning ongoing.
Communicate resiliency
plan through social media
and CSA newsletter



Bottom line:

We think we can keep farming in the floodplain because

- **We don't seem to lose land/soil**
- **We don't feel anger towards anyone, have never felt like victims**
- **We grow almost year round with a lot in tunnels and have great markets and employees**
- **We think we can slowly add some smaller higher elevation leases to our farms rotation**
- **Our infrastructure is not at risk**
- **SINGLE BIGGEST REASON we can keep going: LOW DEBT**

