

# Dry Bean Disease Symptoms

Sclerotinia (white mold)



Fusarium yellows  
(pink pods, yellow leaves, red root)

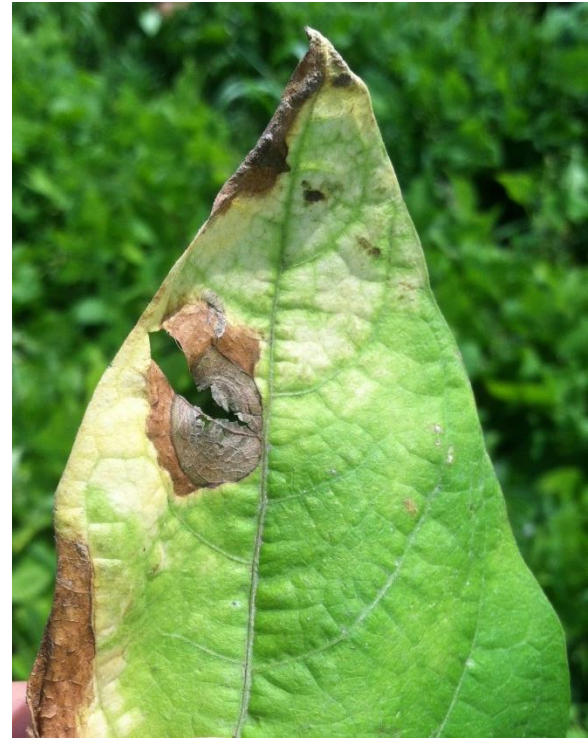




# Anthracnose



# Ascochyta



# Rust





## Potato Leafhopper Damage: “Hopper Burn”



## Bacterial Bean Blight



## Bacterial Brown Spot



Hopper burn allows secondary diseases to colonize.

