

**Thermo Scientific  
Sorvall® T1  
Centrifuge Series**



**Versatility, convenience and value  
for routine applications**

*Featuring fast rotor  
exchanges with AUTO-LOCK®*



## Versatility, convenience and value for routine applications

The Thermo Scientific Sorvall T1 Centrifuge Series provides unsurpassed versatility and exceptional performance in a quiet, compact, 1.2-liter benchtop centrifuge. Offering outstanding reliability and a wide selection of rotors, the Sorvall T1 Series delivers consistent separations quickly, with maximum convenience and comfort.

### Exceptional capacity

The Sorvall T1 Series provides high capacity in a compact footprint, so you can process large numbers of samples without giving up precious bench space.

- Process 60 x 5/7 ml Vacutainer® or 16 x 50 ml conical tubes with the versatile T41 swing-out rotor.
- Process 28 x 5/7 ml Vacutainer or 4 x 50 ml conical tubes in sealed conditions with the S41 rotor.

- Spin 6 x 50 ml conical tubes at up to 12,500 x g with the AC50.10 fixed-angle rotor, or spin 8 x 50 ml tubes with the F15J - 8x50c FIBERLite® conical tube rotor.

- Spin 2 x 3 microplates in sealed buckets with the T20 microplate rotor.
- Process 48 x 2 ml microtubes at > 23,000 x g with the FIBERLite microtube rotor.







1. Snap in your swing-out rotor and lock it in place.



2. Instantly unfasten and remove it.



3. Snap in your microplate rotor, and you're ready to spin again – in less than 5 seconds!

## Changing rotors is easy – with AUTO-LOCK



Our patented AUTO-LOCK rotor exchange system makes routine processing safer, faster and easier:

- **Worry-free spins** – AUTO-LOCK ensures that your rotor is properly locked in place with minimum effort.

- **Fast protocol changes** – You can swap rotors in seconds, without having to remove or tighten lug nuts.
- **Easy cleaning** – AUTO-LOCK makes routine cleaning straightforward.

Adapters and accessories are available for all commonly used sample containers. Sealing lids provide certified protection against aerosols, bacteria and viruses.

### Convenient operation

- The patented AUTO-LOCK rotor exchange system on the Sorvall T1 Series lets you swap rotors in seconds. You can change protocols quickly and perform daily cleaning tasks with ease.
- The user-friendly control panel gives you one-touch access to frequently used programs.



### Advanced technology

The high-throughput 48 x 2 ml and 8 x 50 ml carbon fiber rotors from FIBERLite are easy to handle and offer a safer alternative to conventional metallic rotors, which can corrode with age. Capable of supporting high capacities and g-forces, these rotors also provide a high level of chemical resistance against corrosive agents, making them a truly cost-effective investment for your lab.

### Proven reliability

- The brushless induction motor provides years of service with minimal maintenance.
- Whisper-quiet operation eliminates distractions.

### Proven safety

- The Sorvall T1 Series supports a protected laboratory environment with a full set of sealed accessories, tested by CAMR\* in Porton Down, UK, the gold standard in biological safety testing.

\*CAMR is now incorporated within the UK Health Protection Agency (HPA).

## Thermo Scientific Sorvall T1 Centrifuge Series Rotors and Accessories

### T41 High-Capacity Swing-Out Rotor



T41 high-capacity swing-out rotor (11210435) shown with a 280 ml standard bucket (11210436) and sealing lid (1117512) along with a variety of inserts to meet your specific application requirements

Description	Rotor Capacity	Max Tube ø (mm)	Radius (mm)	Max Speed (rpm)	Max RCF (x g)	Catalog Number
<b>T41 Swing-Out Rotor, 4 x 280 ml</b>						<b>11210435</b>
Standard buckets, 280 ml (set of four)		77	164	4100	3082	11210436
Buckets, 4 x 50 ml conical (set of four)	<b>16</b>	33	169	4100	3176	11175752
Buckets, 3 x 50 ml conical skirted (set of four)	<b>12</b>	33	169	4100	3176	11175759
Buckets, 15 x 5/7 ml Vacutainer (set of four)	<b>60</b>	13.5	165	4100	3101	11175763
Sealing lids for 11210436 and 11175763 (set of four)						11175712
<b>Adapters for T41 Swing-Out Rotor (set of four)</b>						
1 x 280 ml round	4	64	161	4100	3026	11175713
1 x 250 ml flat	4	61	161	4100	3026	11175714
1 x 200 ml flat	4	55	156	4100	2932	11175715
1 x 175 ml conical	4	60	166	4100	3120	11175716
1 x 100 ml	4	38	161	4100	3026	11175719
2 x 65 ml round	8	34	156	4100	2932	11175720
4 x 50 ml round	16	28.5	132	4100	2481	11175721
1 x 50 ml conical skirted	4	29	163	4100	3063	85540175
<b>2 x 50 ml conical</b>	<b>8</b>	<b>29</b>	<b>134</b>	<b>4100</b>	<b>2518</b>	<b>11175722</b>
<b>3 x 50 ml conical*</b>	<b>12</b>	<b>29</b>	<b>134</b>	<b>4100</b>	<b>2518</b>	<b>11210348</b>
1 x Centriprep	4	28	160	4100	3007	11175742
5 x 30 ml round	20	25.5	157	4100	2951	11175723
3 x 25 ml universal	12	26	153	4100	2875	11204125
5 x 25 ml	20	24	155	4100	2913	11175724
4 x 25 ml Corex	16	24	155	4100	2913	11175725
9 x 16 ml round	36	18	160	4100	3007	11175726
<b>12 x 10 ml Vacutainer</b>	<b>48</b>	<b>17</b>	<b>160</b>	<b>4100</b>	<b>3007</b>	<b>11175727</b>
<b>4 x 15 ml Vacutainer *</b>	<b>16</b>	<b>16</b>	<b>163</b>	<b>4100</b>	<b>3063</b>	<b>11175738</b>
7 x 15 ml urine	28	17	161	4100	3026	11175729
<b>4 x 15 ml conical</b>	<b>16</b>	<b>17</b>	<b>163</b>	<b>4100</b>	<b>3063</b>	<b>11175730</b>
<b>5 x 15 ml conical *</b>	<b>20</b>	<b>17</b>	<b>163</b>	<b>4100</b>	<b>3063</b>	<b>11175731</b>
4 x 14 ml Corning round	16	15.5	163	4100	3063	11175747
12 x 13 ml	48	16	160	4100	3007	11175732
9 x 10 ml	36	16	160	4100	3007	11175728
19 x 8 ml	76	12	161	4100	3026	11175733
<b>12 x 5/7 ml Vacutainer</b>	<b>48</b>	<b>12.5</b>	<b>160</b>	<b>4100</b>	<b>3007</b>	<b>11175740</b>
19 x 5 ml RIA	76	13	161	4100	3026	11175734
19 x 3 ml RIA	76	11	161	4100	3026	11175735
13 x 2 ml	52	10	159	4100	2988	11175736

\* In open buckets only.

### S41 Swing-Out Rotor



S41 swing-out rotor (11210246) shown with a 200 ml standard bucket (11175611) and sealing lid (11175612) along with adapters for a variety of applications

Description	Rotor Capacity	Max Tube ø (mm)	Radius (mm)	Max Speed (rpm)	Max RCF (x g)	Catalog Number
<b>S41 Swing-Out Rotor, 4 x 200 ml</b>						<b>11210246</b>
Standard buckets, 200 ml (set of four)		57	161	4100	3026	11175611
Sealing lids for 11175611 (set of four)						11175612
<b>Adapters for S41 Swing-Out Rotor (set of four)</b>						
200 ml PP bottle p/n 41193271	4	56.5	161	4100	3026	direct
1 x 100 ml	4	45	159	4100	2990	11174181
1 x 50 ml round	4	35	158	4100	2970	11174501
<b>1 x 50 ml conical</b>	<b>4</b>	<b>29</b>	<b>159</b>	<b>4100</b>	<b>2990</b>	<b>11174528</b>
1 x 25 ml universal flat/skirt	4	25	158	4100	2970	11174527
3 x 20 ml	12	22	159	4100	2990	11174502
<b>3 x 15 ml conical</b>	<b>12</b>	<b>17.5</b>	<b>156</b>	<b>4100</b>	<b>2930</b>	<b>11174537</b>
7 x 15 ml Nalgene®	28	17	156	4100	2930	11174183
3 x 15 ml urine	12	17	159	4100	2990	11210419
<b>3 x 15 ml Vacutainer</b>	<b>12</b>	<b>17.5</b>	<b>159</b>	<b>4100</b>	<b>2990</b>	<b>11210523</b>
3 x 12 ml Greiner flat	12	17.5	159	4100	2990	11174509
<b>5 x 10 ml Vacutainer</b>	<b>20</b>	<b>16</b>	<b>159</b>	<b>4100</b>	<b>2990</b>	<b>11174503</b>
5 x 5/10 ml flat	20	17	159	4100	2990	11174534
<b>7 x 5/7 ml Vacutainer</b>	<b>28</b>	<b>13</b>	<b>159</b>	<b>4100</b>	<b>2990</b>	<b>11210604</b>
<b>9 x 5 ml Vacutainer</b>	<b>36</b>	<b>13.5</b>	<b>159</b>	<b>4100</b>	<b>2990</b>	<b>11174505</b>
5 x 5 ml flat	20	17	159	4100	2990	11174533
12 x 3–5 ml	48	12	158	4100	2970	11174506
6 x 2 ml	24	11	158	4100	2970	11174508

### T20 Microplate Rotor



Sealed plate carrier (11175631)

Description	Rotor Capacity	Radius (mm)	Max Speed (rpm)	Max RCF (x g)	Catalog Number
<b>T20 Microplate Rotor</b>	<b>2 x 3 microplates / 2x1 deepwell</b>	<b>115</b>	<b>4100</b>	<b>2160</b>	<b>11175630</b>
Sealed plate carriers (set of two)	2 x 3 microplates / 2x1 deepwell				11175631
Rubber cushion for flexible microplates					11174207
Flask adapters (set of two)	2 x 1 T-25 or T-75 Falcon® type flasks				11210762



Indicates that the centrifuge accessory has been successfully tested for biological containment by C.A.M.R. (HPA), Porton Down, UK.



### AC15.4 Fixed Angle Rotor



Description	Rotor Capacity	Max Tube ø (mm)	Radius (mm)	Max Speed (rpm)	Max RCF (x g)	Catalog Number
<b>AC15.4 Fixed Angle Rotor, 37°</b>	<b>30 x 15 ml</b>	<b>17.5</b>	<b>135</b>	<b>4100</b>	<b>2537</b>	<b>11175755</b>
<b>Adapters (each)</b>						
1 x 10/15 ml	30		135	4100	2537	direct
1 x 13.5 ml	30		130	4100	2440	11203666
1 x 8/7 ml Vacutainer	30		130	4100	2440	11172596
1 x 5 ml Hemogard™	30		116	4100	2180	11172595
1 x 5 ml	30		116	4100	2180	11172402
1 x 3 ml	30		112	4100	2100	11172287
1 x 2/1.5 ml	30		105	4100	1970	11172288

### AC100.10A Fixed Angle Rotor



Description	Rotor Capacity	Max Tube ø (mm)	Radius (mm)	Max Speed (rpm)	Max RCF (x g)	Catalog Number
<b>AC100.10A Fixed Angle Rotor, 25°</b>	<b>6 x 100 ml</b>	<b>38</b>	<b>99</b>	<b>10000</b>	<b>11066</b>	<b>11210437</b>
<b>Adapters (set of six)</b>						
1 x 50 ml round	6	29	93	10000	10397	11174713
1 x 50 ml conical	6	30	93	10000	10397	11174714
1 x 38 ml round	6	25.5	88	10000	9838	11174715
1 x 15 ml conical	6	17	93	10000	10397	11174716
2 x 10 ml round	12	16	83	10000	9279	11174717

### AC50.10 Fixed Angle Rotor



Description	Rotor Capacity	Max Tube ø (mm)	Radius (mm)	Max Speed (rpm)	Max RCF (x g)	Catalog Number
<b>AC50.10 Fixed Angle Rotor, 40°</b>	<b>6 x 50 ml con</b>	<b>29.5</b>	<b>112</b>	<b>10000</b>	<b>12520</b>	<b>11175754</b>
<b>Adapters</b>						
1 x 50 ml conical (each)	6	30	112	10000	12520	direct
1 x 50 ml round (set of six)	6	28.5	112	10000	12520	11210577
1 x 30/38 ml (set of eight)	6	26	91	10000	10174	11174599
1 x 15 ml conical (set of four)	6	17.5	105	10000	11738	11174606
1 x 10 ml (set of four)	6	17	112	10000	12520	11177378

### FIBERLite F15J-8x50c Carbon Fiber Conical Tube Rotor



Description	Rotor Capacity	Max Tube ø (mm)	Radius (mm)	Max Speed (rpm)	Max RCF (x g)	Catalog Number
<b>F15J-8x50c Carbon Fiber Conical Tube Rotor</b>	<b>8 x 50 ml</b>	<b>29</b>	<b>104</b>	<b>10000</b>	<b>11626</b>	<b>11210850</b>
Set of two adapters for 15 ml disposable conical tube	8 x 15 ml	19				75100378

### AC2.14 Sealed Microtube Rotor



Description	Rotor Capacity	Max Tube ø (mm)	Radius (mm)	Max Speed (rpm)	Max RCF (x g)	Catalog Number
<b>AC2.14 Sealed Rotor, 45°</b>	<b>24 x 2 ml</b>	<b>11</b>	<b>84</b>	<b>14600</b>	<b>20016</b>	<b>11175741</b>
Spare lid for AC2.14 Rotor						11175642
<b>Adapters: see adapters for FIBERLite High-Throughput Microtube Rotor</b>						

### FIBERLite® High-Throughput Microtube Rotor



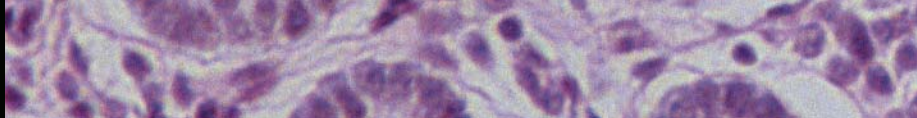
Description	Rotor Capacity	Max Tube ø (mm)	Radius (mm)	Max Speed (rpm)	Max RCF (x g)	Catalog Number
<b>FIBERLite Microtube Rotor, 45°</b>	<b>48 x 2 ml</b>	<b>11</b>	<b>97</b>	<b>14600</b>	<b>23113</b>	<b>11210351</b>
<b>Adapters (set of 24)</b>						
1 x 2/1.5 ml	24 / 48	10				direct
1 x 0.5 / 0.8 ml	24 / 48	8				41174928
1 x 0.5 ml	24 / 48	6				41174938
1 x 0.2 ml PCR	24 / 48	6				11174631

### DC6.11 Drum Rotor



Description	Rotor Capacity	Max Tube ø (mm)	Radius (mm)	Max Speed (rpm)	Max RCF (x g)	Catalog Number
<b>DC6.11 Drum Rotor, 90°</b>		<b>N/A</b>	<b>72</b>	<b>14600</b>	<b>17158</b>	<b>11175743</b>
<b>Adapters (one rack)</b>						
10 x 1.5–2 ml	60	11				11174561
20 x 0.5–0.8 ml Microtainer™	120	8				11174573
20 x 0.7 ml Rhesus	120	6				11174574
21 x 0.6 ml Viatron	126	6				11174563
32 x 0.25–0.4 ml Beckman	192	6				11174562





## Thermo Scientific Sorvall T1 Centrifuge Series Specifications



Specifications	Sorvall T1	Sorvall RT1
<b>Max Capacity</b>		
Swing-Out	4 x 280 ml	4 x 280 ml
Fixed Angle	6 x 100 ml	6 x 100 ml
<b>Max Density</b>	1.2	1.2
<b>Max Load</b>	1.34 kg	1.34 kg
<b>Max Speed</b>		
Swing-Out	4,100 rpm	4,100 rpm
Fixed Angle	14,600 rpm	14,600 rpm
<b>Max RCF</b>		
Swing-out	3,176 x g	3,176 x g
Fixed Angle	23,113 x g	23,113 x g
<b>Control System</b>	Microprocessor	Microprocessor
<b>Programs</b>	4	4 + pre-cooling with direct recall
<b>Speed Set/Display</b>		
Range	500–14,600 rpm	500–14,600 rpm
Step	10 rpm	10 rpm
Display Accuracy	+/- 10 rpm	+/- 10 rpm
<b>RCF Set/Display</b>		
Range	18–23,113	18–23,113
Step	1 x g across the whole range	1 x g across the whole range
Display Accuracy	+/- 1 x g	+/- 1 x g
<b>Radius Control Accuracy</b>	1 mm	1 mm
<b>Timer Set/Display</b>	30 sec–99 min + continuous	30 sec–99 min + continuous
<b>Temperature Set/Display</b>	N/A	-9°C to 40°C
<b>Acceleration Rates</b>	5	5
<b>Braking Rates</b>	5 + no brake	5 + no brake
<b>Drive System</b>	Direct	Direct
<b>Motor Type</b>	Brushless induction	Brushless induction
<b>Power (average / max)</b>	350 / 500W	550 / 800 W
<b>Sound level (6 x 50 ml at 10000 rpm)</b>	61 dBA	54 dBA
<b>Sound level (4 x 280 ml at 4100 rpm)</b>	62 dBA	59 dBA
<b>Standards</b>	IEC 1010-1, IEC 1010-2-020, CE marked, UL listed, cUL certified	IEC 1010-1, IEC 1010-2-020, CE marked, UL listed, cUL certified

Ordering Information	Sorvall T1	Sorvall RT1
<b>Catalog Numbers</b>		
230V–50/60 Hz	75002381	75002383
120 V–60 Hz	75002382	75002384
<b>Product Dimensions</b>		
Height (lid closed) [cm / in]	37 / 14.6	37 / 14.6
Width [cm / in]	40 / 15.7	57 / 22.4
Depth [cm / in]	50 / 19.7	60 / 23.6
Weight [kg / lb]	40 / 88.1	72 / 158.7
<b>Packing Dimensions</b>		
Height [cm / in]	60 / 23.6	61 / 24.0
Width [cm / in]	61 / 24.0	76 / 29.9
Depth [cm / in]	54 / 21.2	74 / 29.1
Weight [kg / lb]	52 / 114.6	85 / 187.3

### A History of Performance and Reliability

For nearly 60 years, our Thermo Scientific Sorvall centrifuges have stood for outstanding performance and reliability in the lab. That tradition continues today. From basic benchtop instruments to advanced floor models, we take pride in manufacturing centrifuges that deliver

reliable operation and consistent results year after year.

### Worldwide Service and Support

We are committed to keeping your lab equipment working at peak performance levels. Our goal is to help you lower ownership costs, manage labs more

effectively, and increase productivity.

Contact your local account representative to learn more about our service offerings, including service agreements, preventive maintenance, on-site field repair, depot repair, compliance services and educational services.

©2007 Thermo Fisher Scientific Inc. All rights reserved. Sorvall, AUTO-LOCK and Nalgene are registered trademarks of Thermo Fisher Scientific Inc. and its subsidiaries. FIBERLite is a registered trademark of Piramoon Technologies Inc. Falcon is a trademark of BD Biosciences. Vacutainer, Hemogard and Microtainer are trademarks or registered trademarks of BD. Specifications, terms and pricing are subject to change. Not all products are available in all countries. Please consult your local sales representative for details.