

HOME PAGE

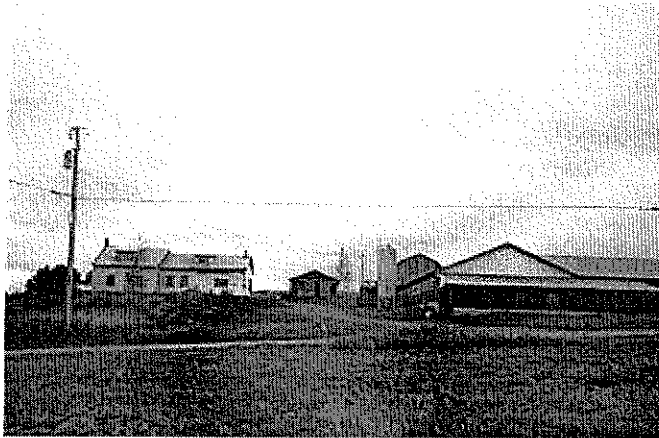
Your Vermont Real Estate Experts!

Listings

About Us

Tools & Links

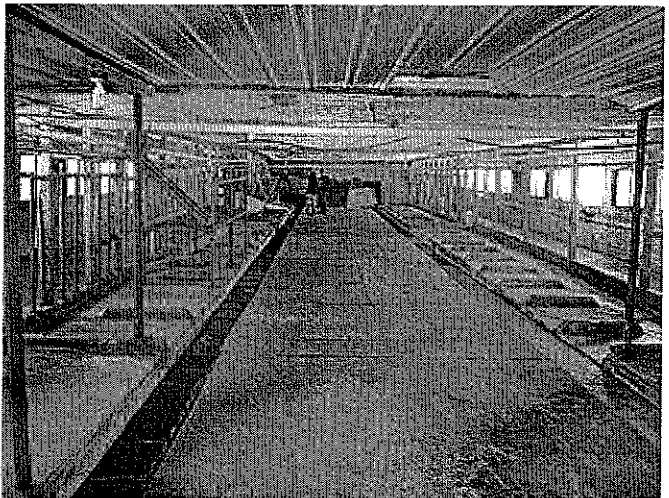
Contact Us



HOLLAND, VT

#6039 - 270 DEGRE VIEWS

from this hillside hobby farm with 41 acres. Think of all the uses for this 115 tie cow barn. The 1800's, 3 bedroom farmhouse has views everyone would be envious of. The owners are offering this property @ \$169,000. [Data Sheet](#)



allseas@together.net



Home - [Multi-Unit/Apartments](#) - [Village Homes](#) - [City Homes](#) - [Country Homes](#)
[Condominiums](#) - [Lakefront Homes](#) - [Mobile Homes](#) - [Camps](#) - [Commercial](#)



Cape

Ranch

Two Story

Berlin, VT

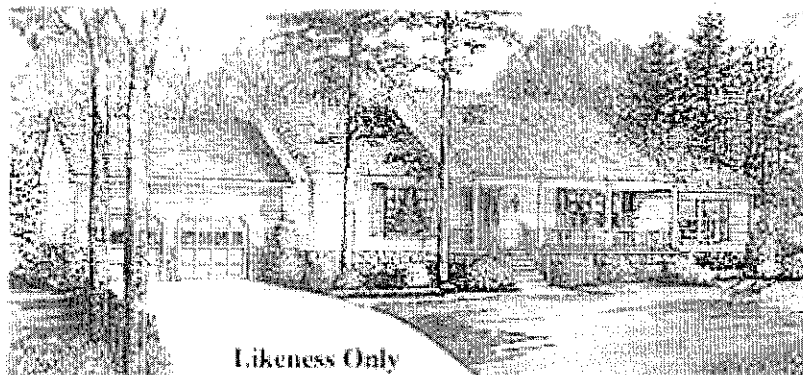
Homes in the Vermont Spirit

The Vermont way of life... it's living on a human scale. It's a view of the hills from your windows... cross country skiing and snowmobiling nearby... peace and privacy combined with a sense of community. Today's Vermont way of life is more. It's convenience too.



Likeness Only

You're busier than ever, so your home has to be close to the centers of your activity - work, school, shopping, and recreation. We created Partridge Farms with your wants and needs in mind. Partridge Farms is a special place - a planned residential community set gently on a wooded hillside in Berlin, Vermont.



Likeness Only

Vermonters are known for the pride and care they take in their work. We'll see to it that this standard of excellence is built into your new home at Partridge Farms. You have better things to spend your money on than heating bills. All of our homes have

efficient heating systems, and 2x6 construction is our standard.

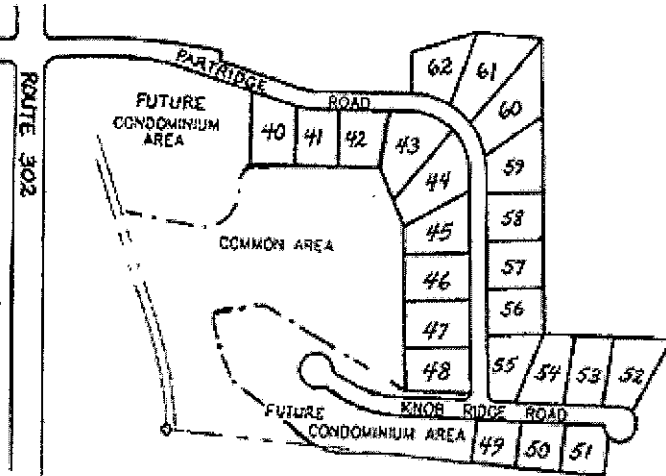
All of the homes at Partridge Farms have top quality kitchen cabinets and your choice of carpeting and inlays. Partridge Farms homes have 2 car garages, paved driveways, and the exterior earth tone color scheme of your choice.

This final phase of Partridge Farms will have just 23 single-family homes and 44 condominium units... you'll want to hurry in to reserve your new home today!

Country Living. Urban Convenience

In your quiet retreat at Partridge Farms, it's easy to forget that you are only a few easy minutes from your centers of activity/;

Interstate 89, National Life, the State Capital, the Berlin Mall, the Barre Opera House, the Vermont History Center, the Central Vermont Hospital, and the airport. Paved town roads, municipal services and cable TV serve your property.



Community and Individuality

The design of your home should reflect your unique taste and life-style. Each of our single-family homes is individualized for you. Our house lots average a half acre.

Respect For Nature

In the early part of this century, the Partridge family farm was known as one of the most beautiful farms in central Vermont. We have preserved that beauty in our careful site and lot design

Four Season Recreation

Whether you enjoy a quiet glide through the winter woods on cross-country skis or snowmobile, a round of golf, a refreshing swim, or a heart pounding game of tennis or racquetball, you'll find your preferred recreation only a few minutes from your home at Partridge Farms. Within a forty-five minute drive, Burlington, Stowe and Waitsfield offer a wide array of cultural and entertainment opportunities.

DRIVING DIRECTIONS

From: I-89

Take Exit 7. Go through three traffic lights, then bear right, following sign to Montpelier (Route 302 West). Go straight through the next traffic light/intersection (across Route 302). (A Volkswagen Dealership will be at your left and a Friendly's Restaurant will be in front of you just to your right). You will be on Partridge Road. Go approximately 1/10th mile and cross over the river. Our office, Ran-Mar / Village Homes is straight ahead.

From Hardwick

Take Route 14 South to Route 2 West. From St. Johnsbury take Route 2 West. Continue on Route 2 West to the intersection of Route 302 in Montpelier. Turn left onto Route 302 East. Go approximately 1.5 miles. Turn left at the first traffic light, you will be on Partridge Road.