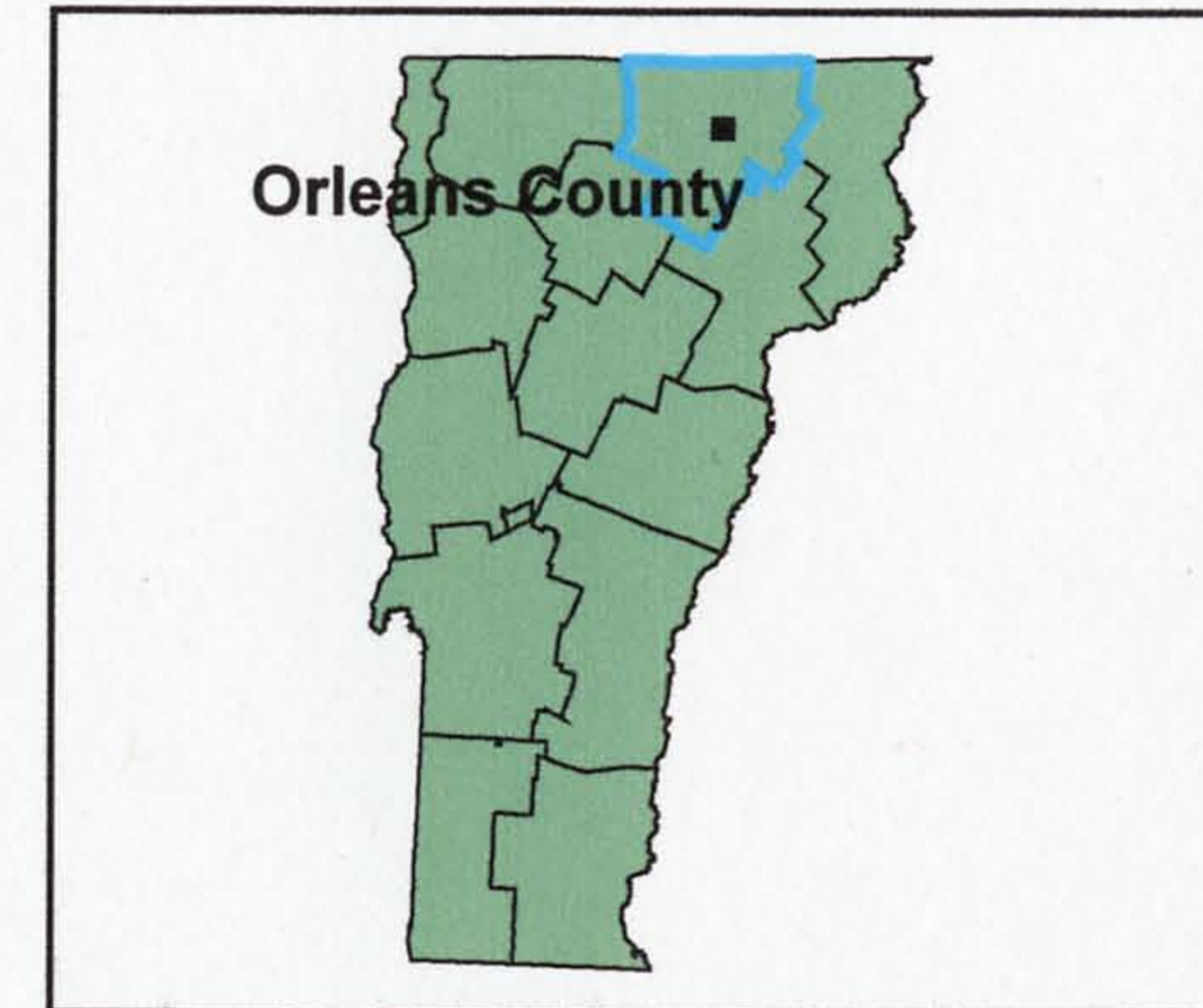
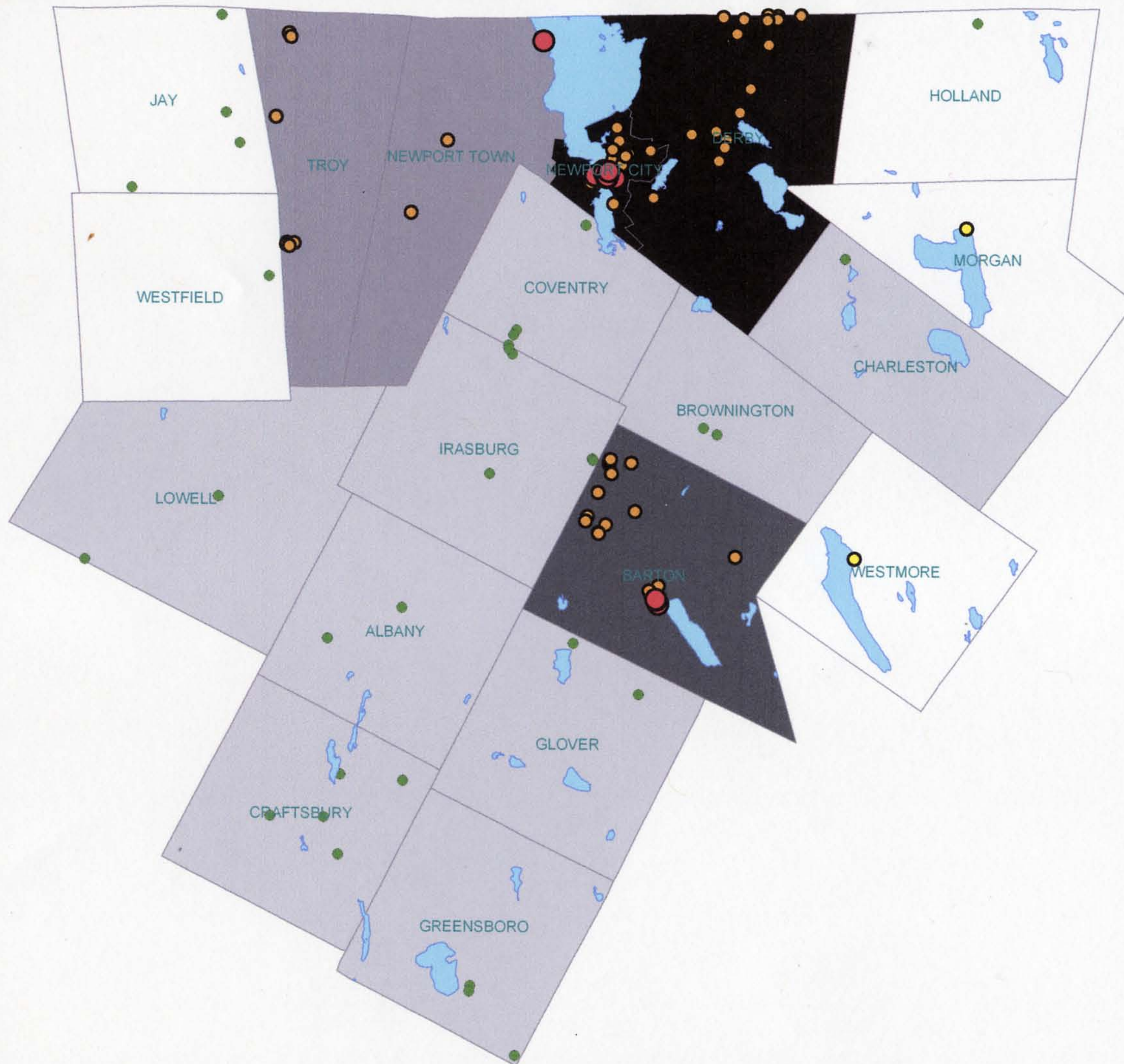


Prioritized Hazardous Waste Sites in Orleans County, VT

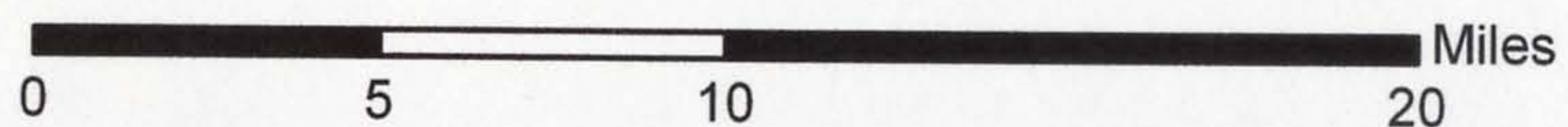


Hazardous Waste Site Priority

- High Priority (within 500ft of lake and high pop.)
- Medium Priority (within 500 ft of lake)
- Medium Priority (within high pop. area)
- Low Priority

Population

- 306 - 669
- 670 - 1136
- 1137 - 1564
- 1565 - 2780
- 2781 - 5005



Map composition by Chris Anderberg, GIS Lab #10, 12/2/04. Source: "Hazardous waste sites in Vermont." Various Scales. "Vermont Sprawl Database." 1:100,000. "Northern Forest Lakes and Ponds greater than 10 acres." 1:24,000. Vermont State Plane Meters (NAD83). All data available through VCGI.