

Three New Invasive Pests in Vermont, New Hampshire, and Maine

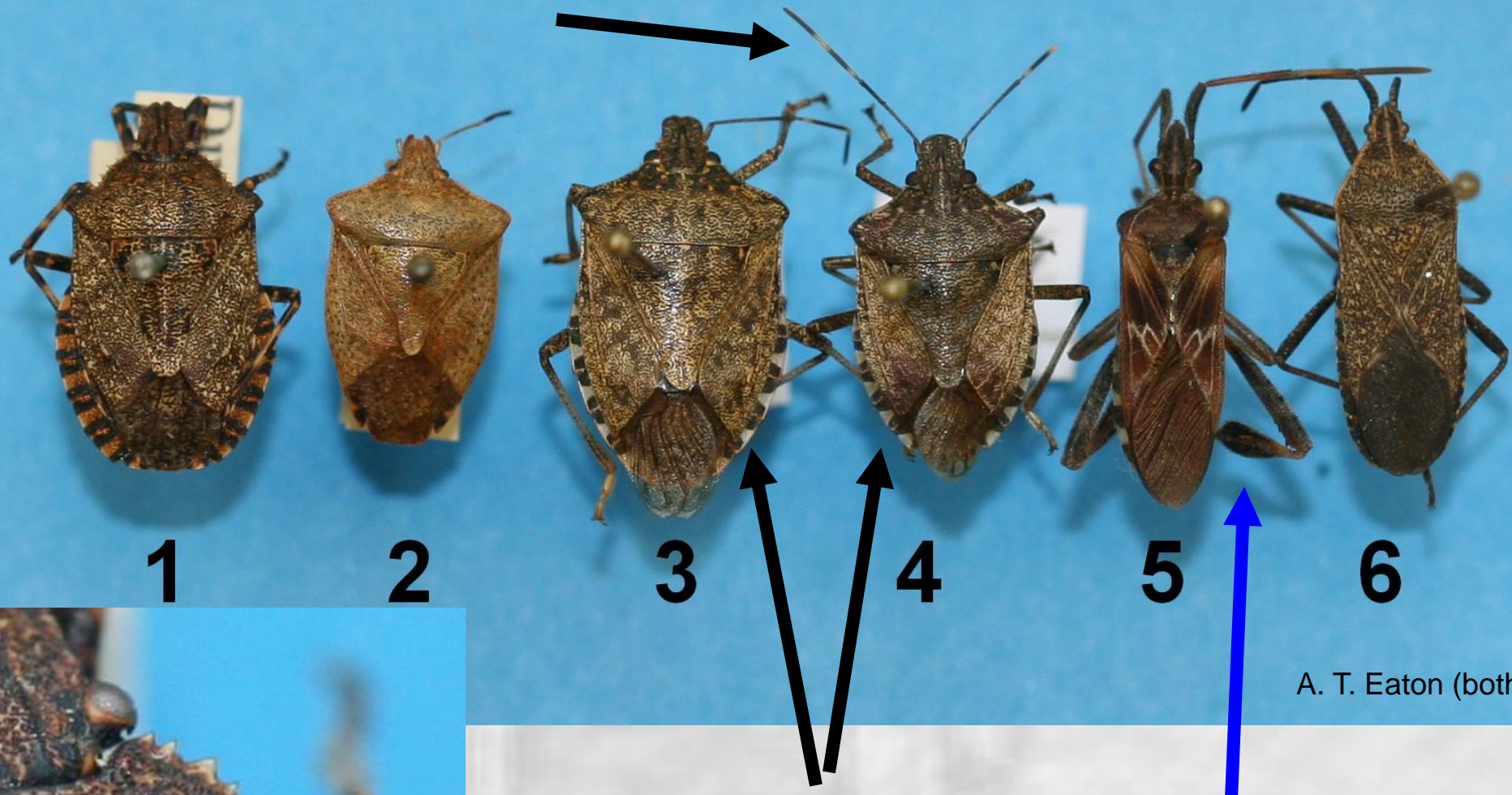
**Dr. Alan T. Eaton
UNH Cooperative Extension
January 8-10, 2013**

Brown Marmorated Stinkbug

Discovered in
ME 2006
NH 2010
VT 2011



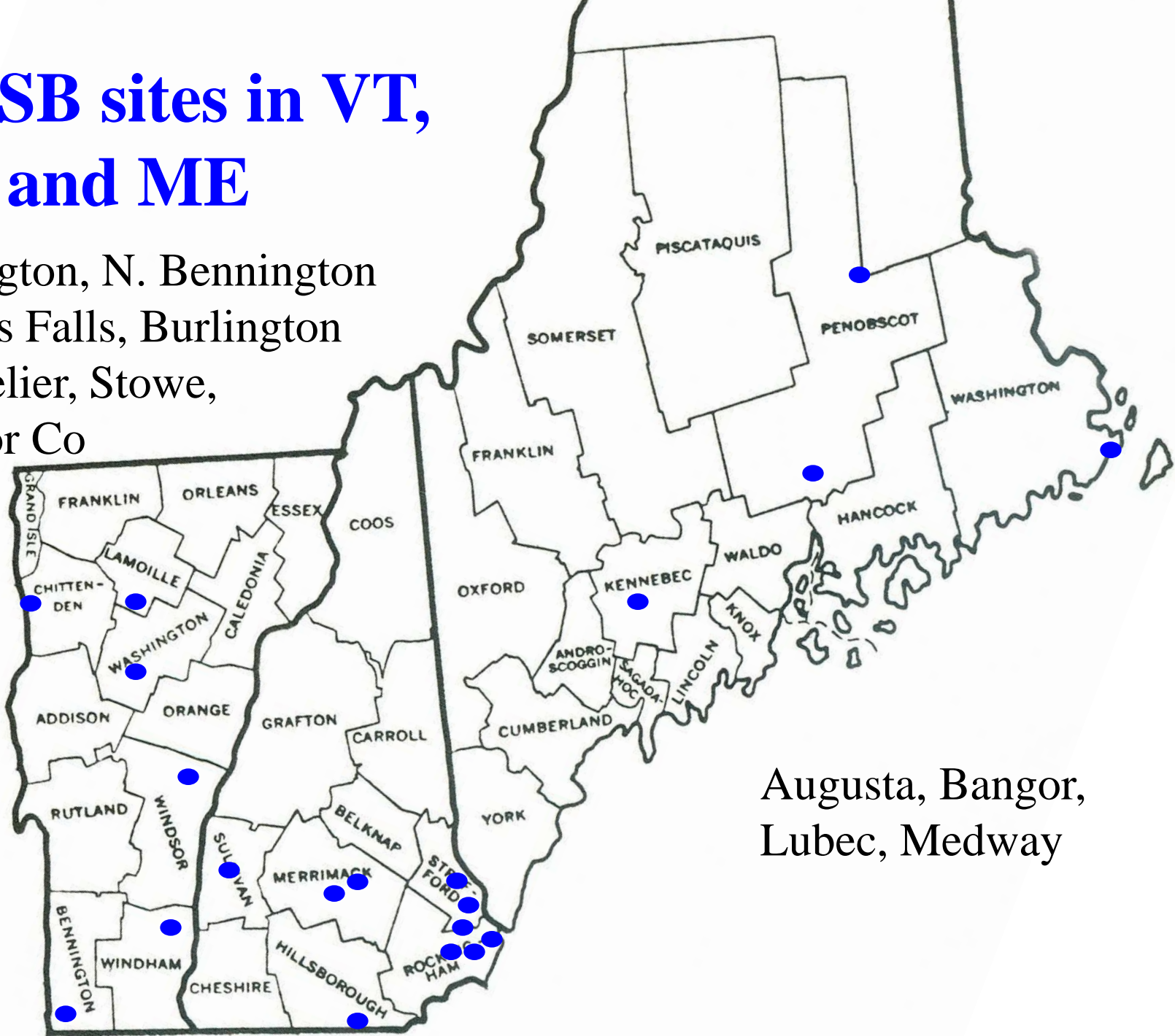
Brown Marmorated Stinkbug



A. T. Eaton (both)

BMSB sites in VT, NH and ME

Bennington, N. Bennington
Bellows Falls, Burlington
Montpelier, Stowe,
Windsor Co



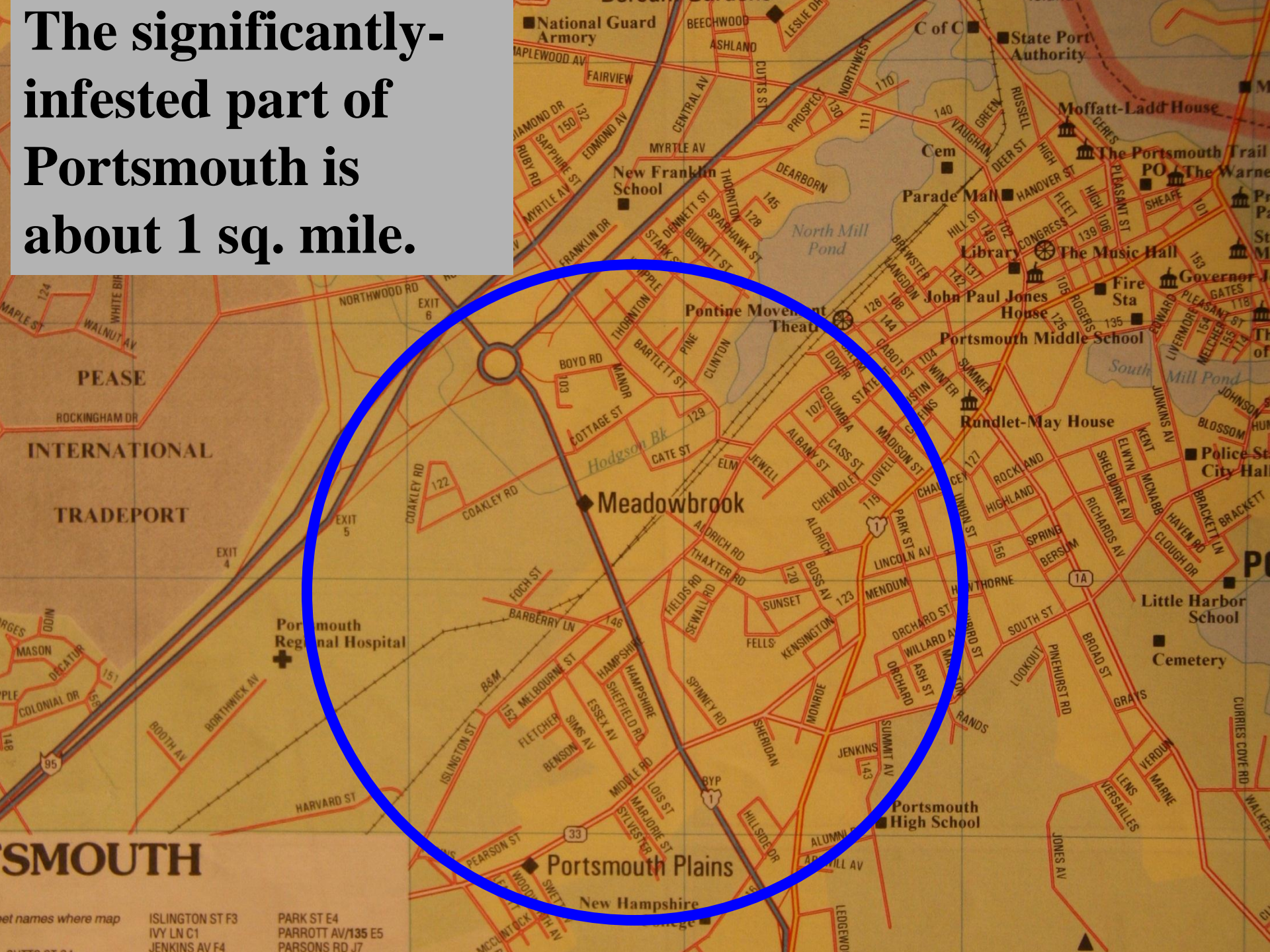
Augusta, Bangor,
Lubec, Medway

Municipalities with Brown Marmorated Stinkbug as of November 9, 2012



Chichester	Concord
Dover	Durham
Greenland	Nashua
Newport	Portsmouth
Rochester	Stratham

The significantly-infested part of Portsmouth is about 1 sq. mile.





Our numbers are VERY LOW, compared to those in Maryland and West Virginia.

It will take years before they become serious agricultural pests here.

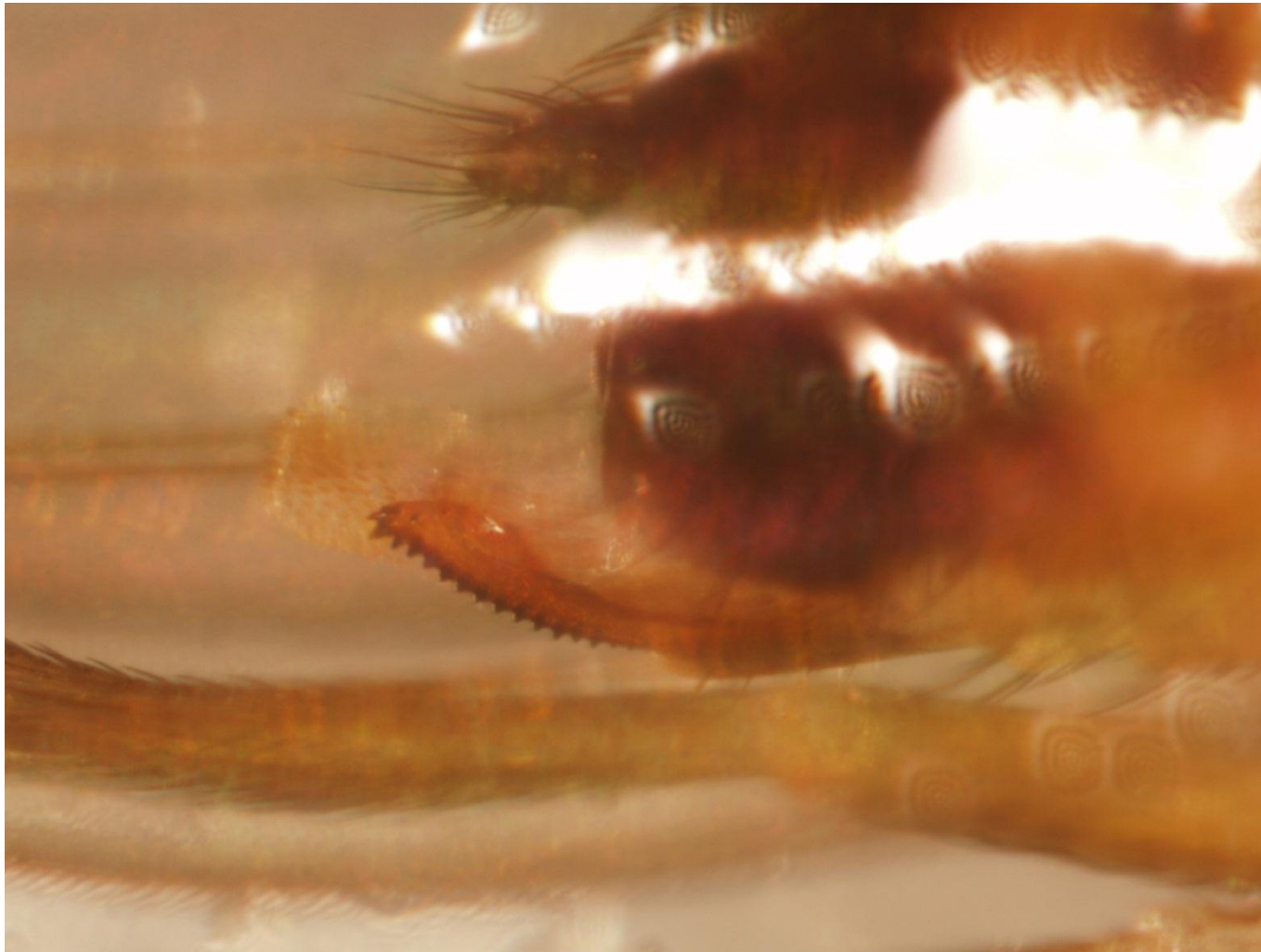
Down south they attack:

Peaches, apples, tomatoes, corn, beans, ornamental trees & shrubs...

**SWD (spotted wing drosophila) was
discovered in
NH/ME/VT
Sept. 2011.**



Unlike our other Drosophilids, the female of SWD has a saw-edged egg-layer, enabling it to lay eggs through the skin of sound fruit.



Most serious damage here:
bramble fruit
blueberries
Aug/Sept strawb.

So far escaped:
cherries
June strawb.
early blueb.



Less damage in Northern VT, NH, ME



Sept 13, 2012
Stephentown, NY

2013:

1. **Attack may begin in July.**
2. **highest numbers will be Sept/Oct.**
3. **Sanitation will be important: Remove and destroy all over-ripe fruit promptly. Dumping it on a pile does not destroy it!**
4. **Frequent monitoring will be needed.**
5. **Controls should be tied to monitoring.**

Spraying

1. Spinosad, Malathion

**2. Spraying will interrupt picking patterns.
Sprays control for 1-5 days (??)**

3. Pesticide effectiveness:

<http://www.ipm.msu.edu/SWD.htm>

4. SWD in NH website:

<http://extension.unh.edu/Agric/AGPMP/Spottedwingdrosophila.htm>

Fruit Quality

Refrigerate fruit!!

Lightly infested fruit probably can be eaten (soon) with no noticeable effects.

Infested fruit that are held for several days will decompose quickly.

**Emerald Ash Borer hasn't been found
in NH/VT/ME yet. In NA it hits only Ash
(*Fraxinus*). Highly mobile!**

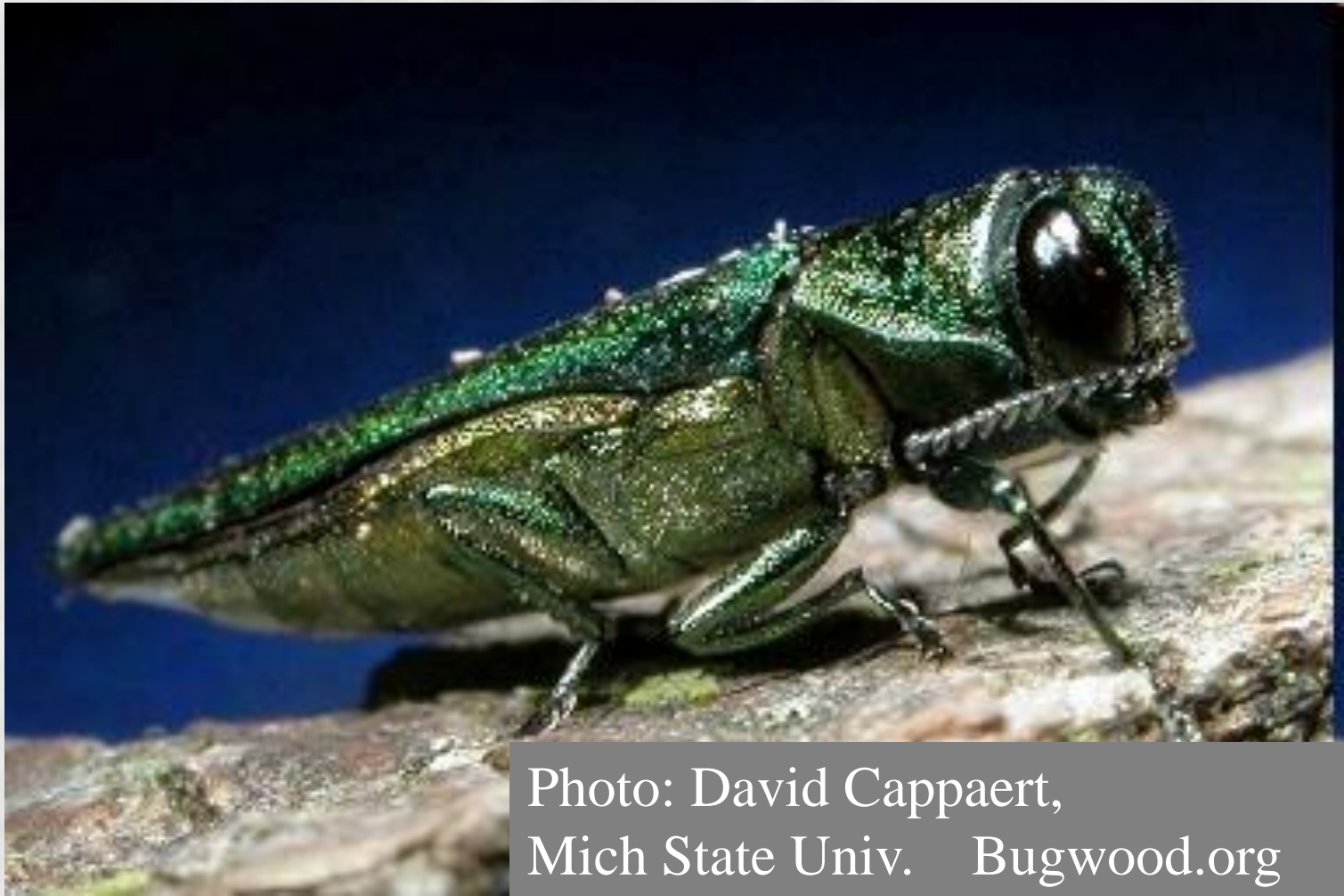


Photo: David Cappaert,
Mich State Univ. Bugwood.org

Discovered in USA: Michigan 2002

Indiana, Illinois, New York

Ontario, Ohio

Pennsylvania

West Virginia, Wisconsin

2012: Tolland, CT,

Berkshire Co, MA



Kills:
White ash
Green ash
Black ash

Out-of-state firewood quarantine

A faint, grayscale background image of a building with a prominent steeple, possibly a church or university building, centered behind the text.

Questions?