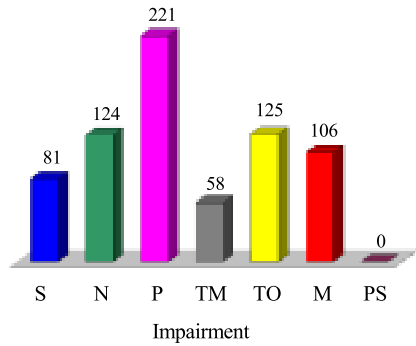
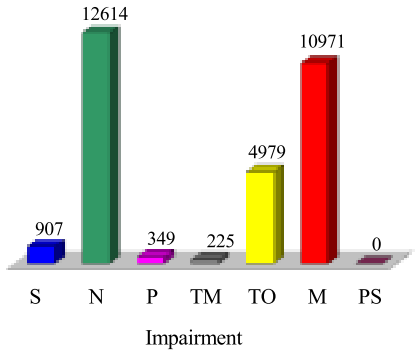


Vermont 1998 Polluted Waters

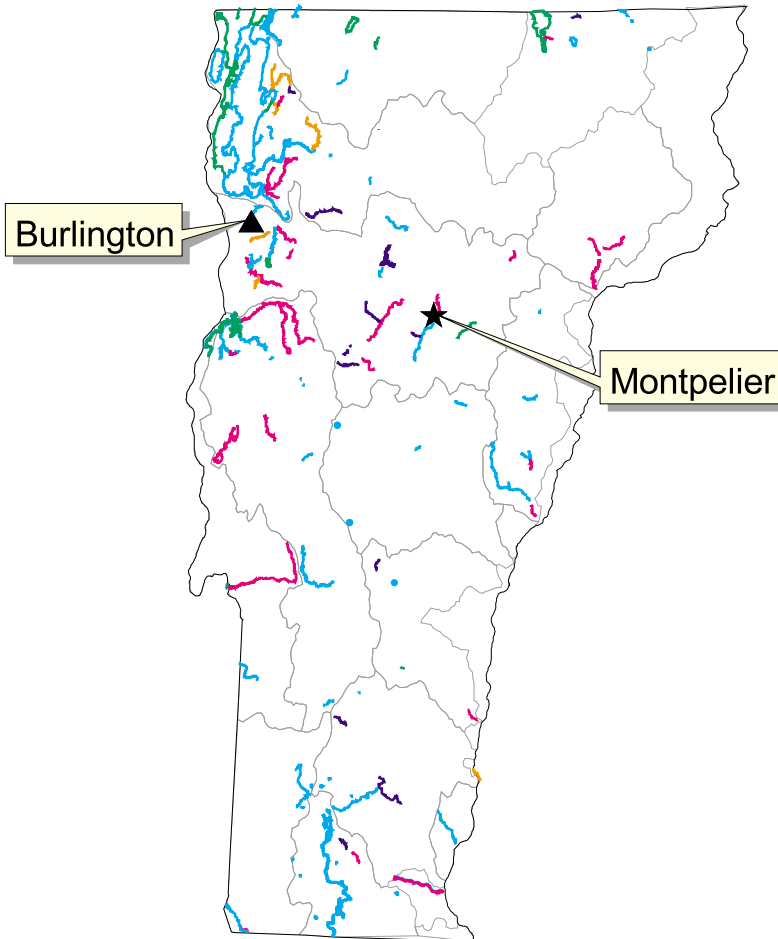
Impaired Stream/River/Coastal Shoreline Miles



Impaired Lake/Estuary/Wetland Acres



S = Sedimentation TO = Toxics/Organics
 N = Nutrients M = Mercury
 P = Pathogens PS = Pesticides
 TM = Toxics/Metals/Inorganics



Legend:

- Sedimentation
 - Nutrients
 - Pathogens
 - Multiple *
 - Other **
 - 8-digit USGS Cataloging Units
 - Capital City
 - Largest City
- * Any combination of sediments, nutrients, and pathogens
 ** All other causes

Source: 1998 State 303(d) Lists

