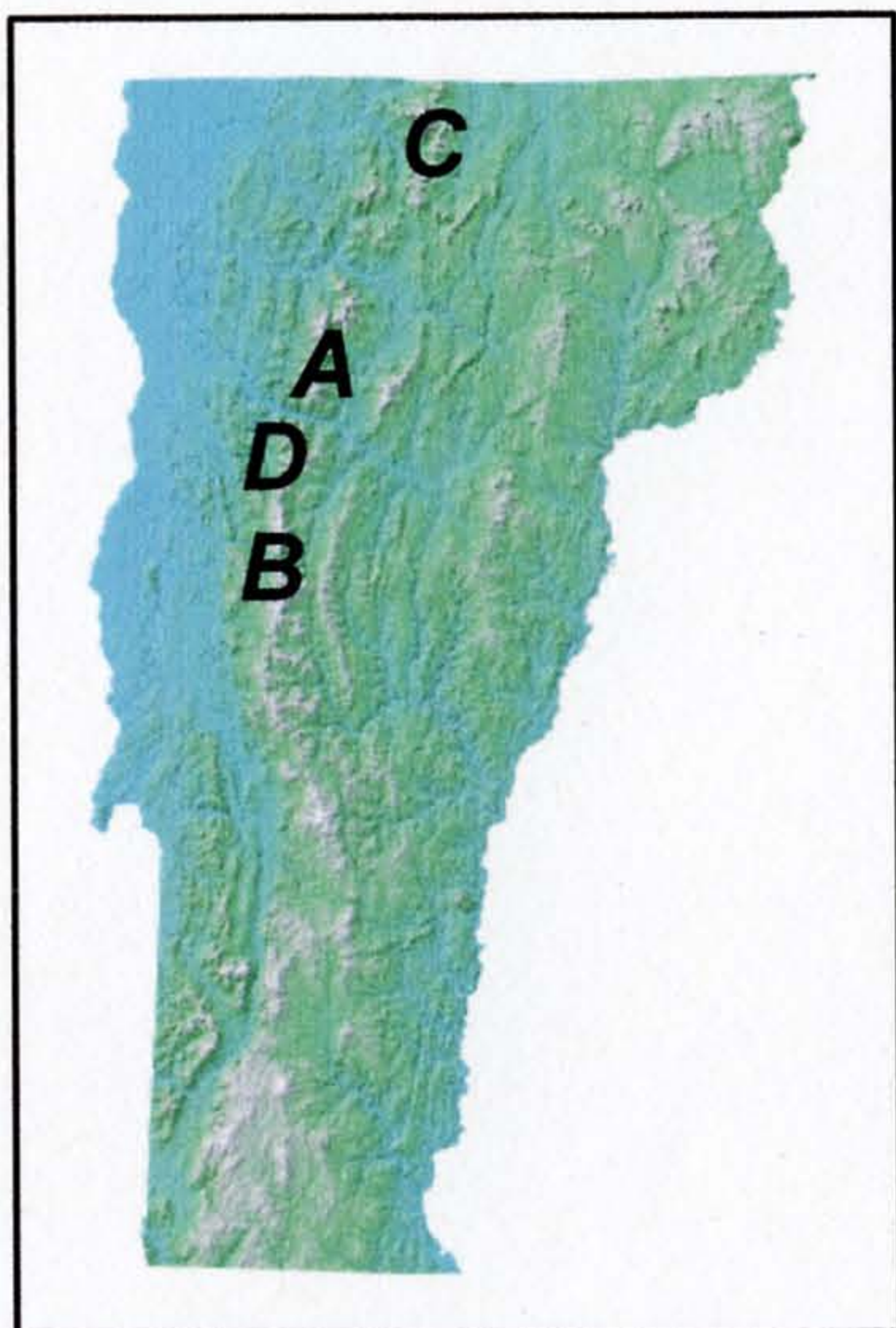
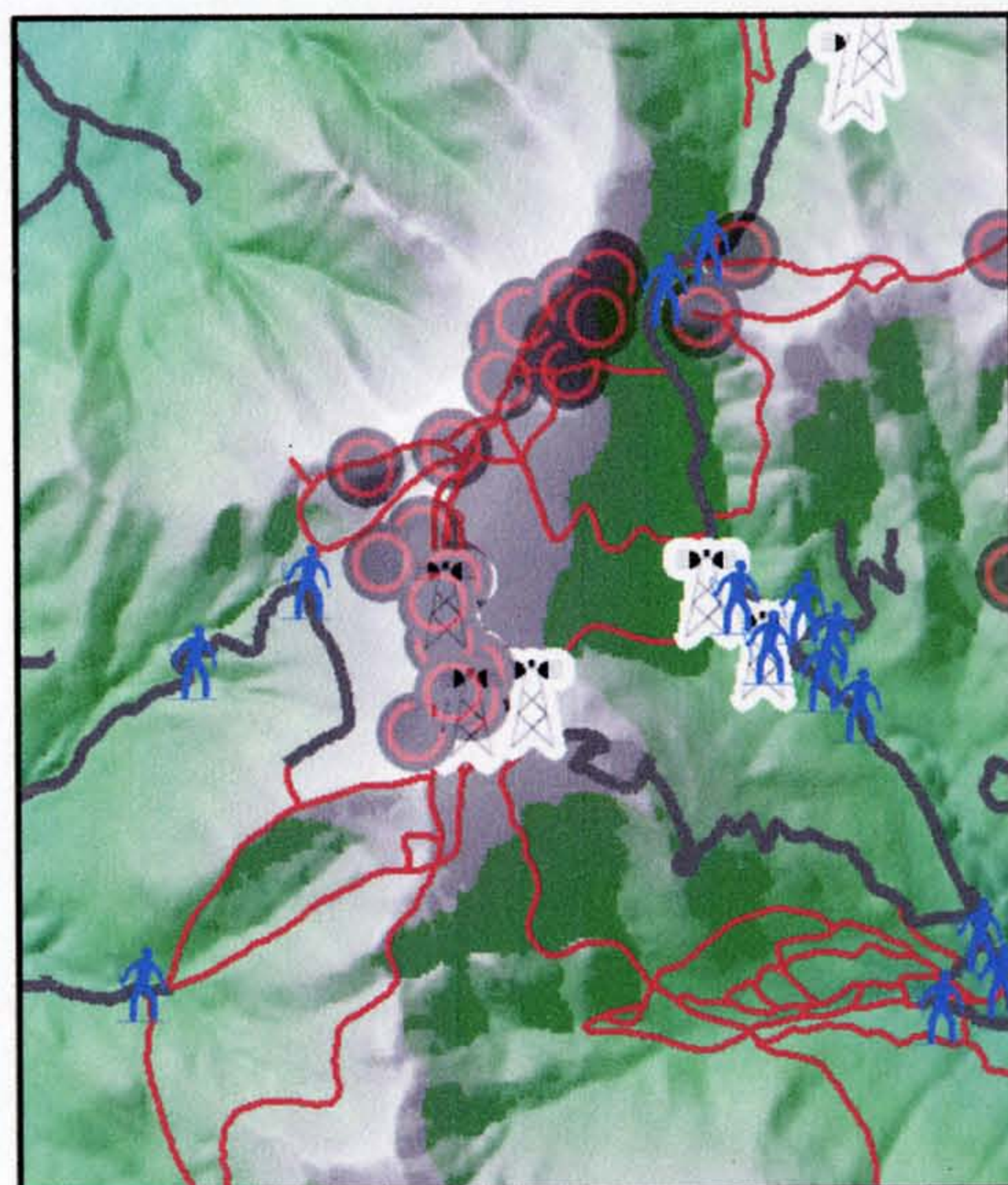


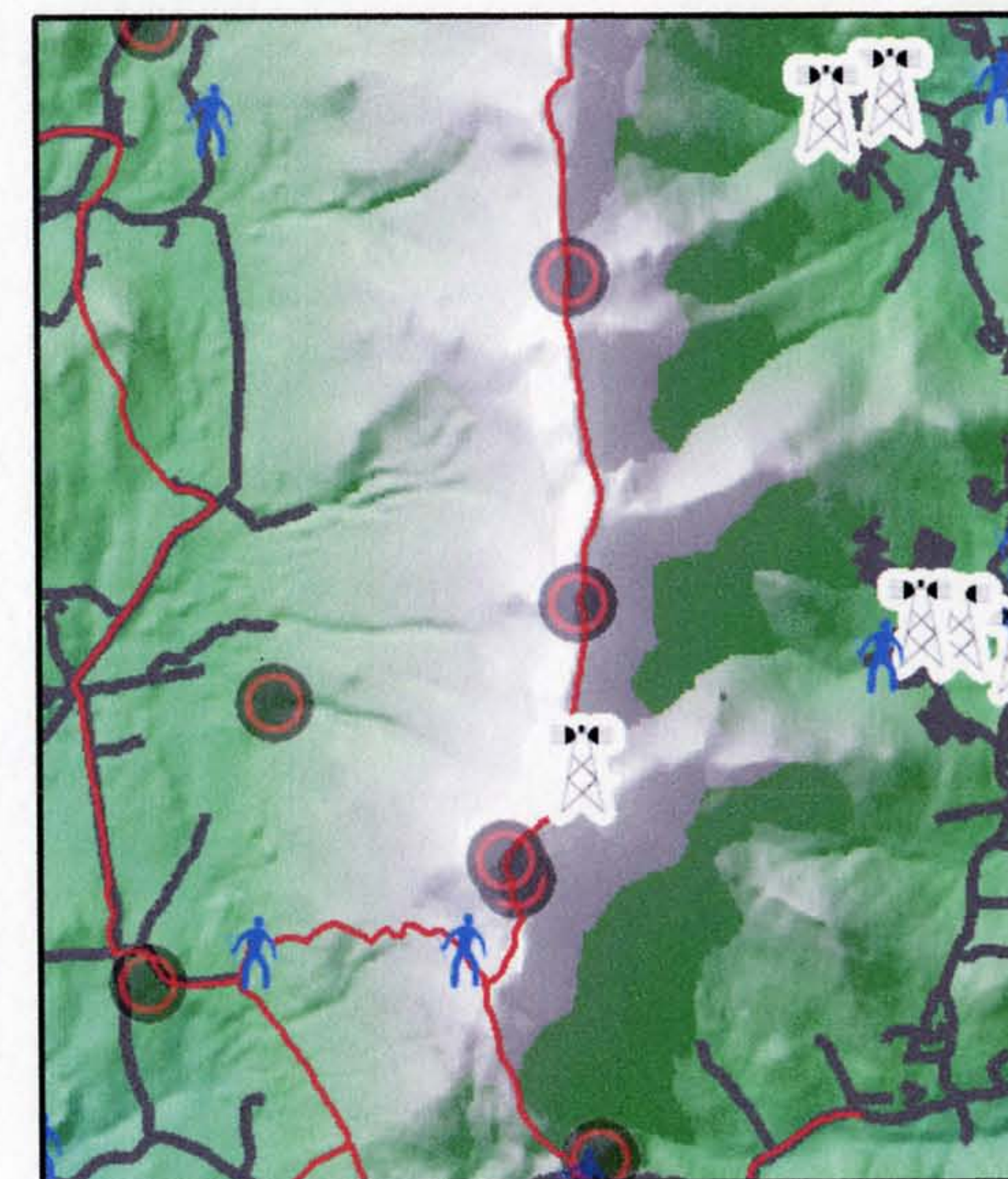
Comparison of Development Impact on Northern High Peaks of Vermont



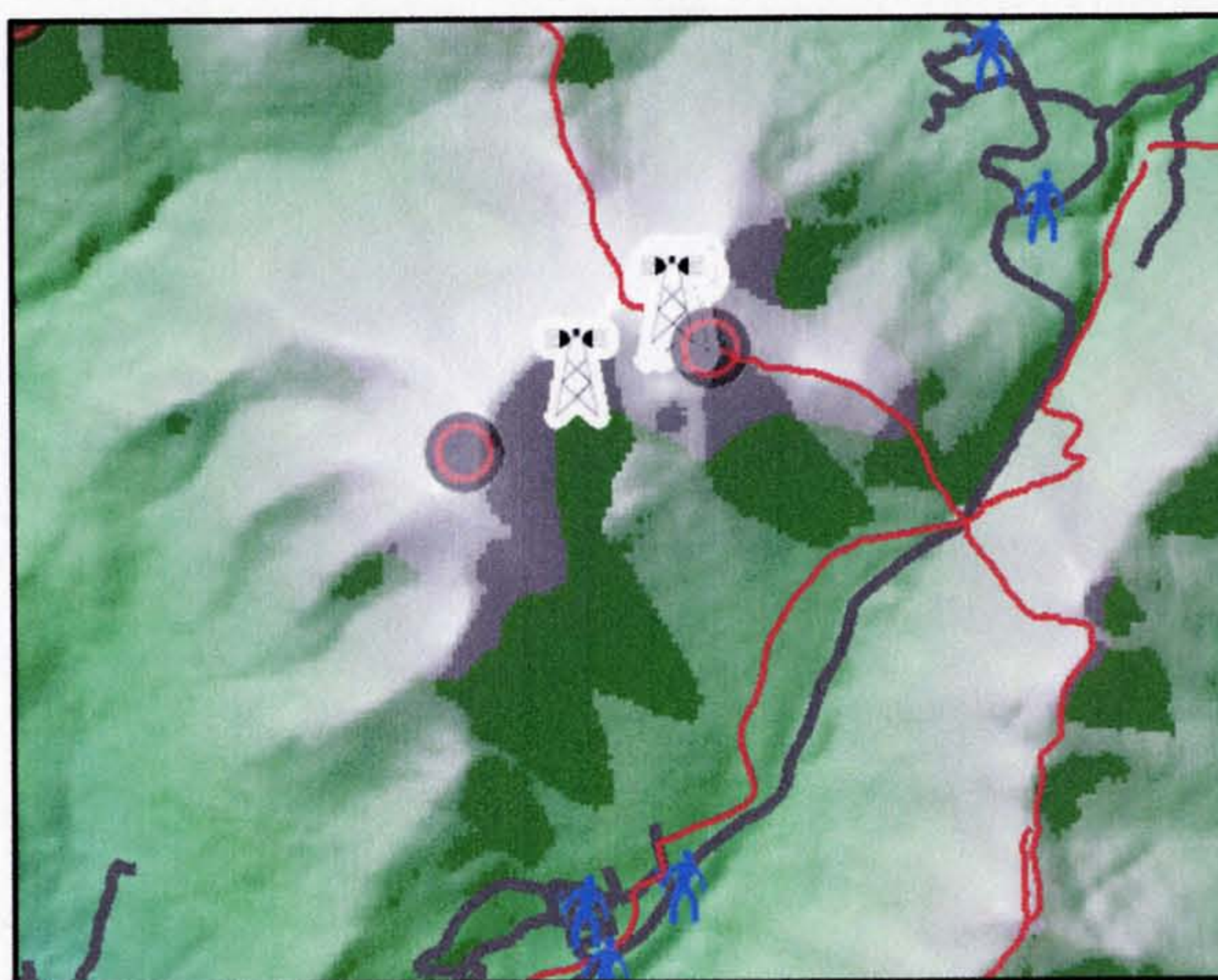
Locations of ranked peaks



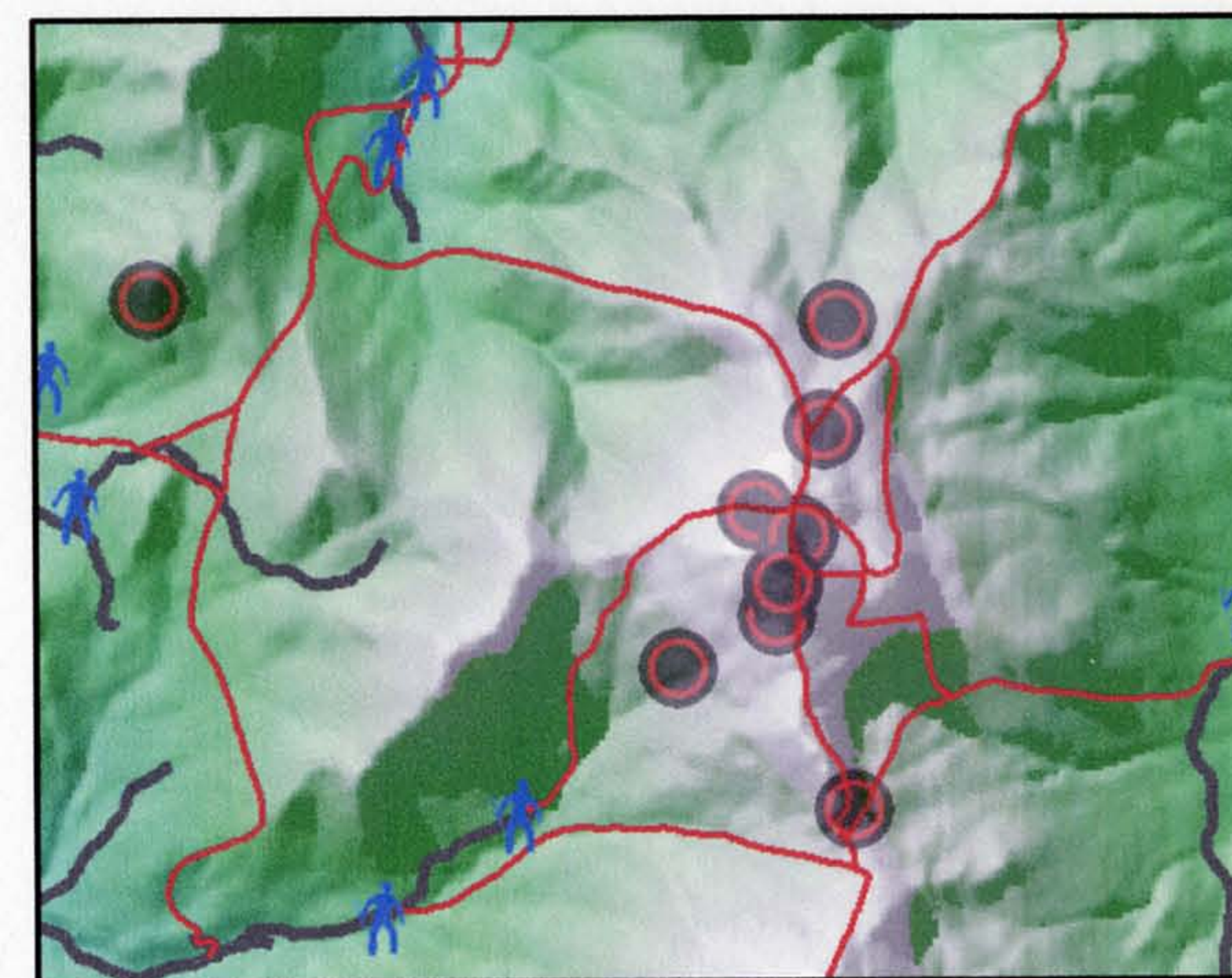
A. Mount Mansfield (ski area acres: 480)
19 rare sites (most at risk)



B. Mount Ellen to Mount Abraham (ski area acres: 508)
4 rare sites (2nd most at risk)



C. Jay Peak (ski area acres: 385)
2 rare sites (2nd least at risk)



D. Camels Hump (ski area acres: 0)
8 rare sites (least at risk)

Sources: VT Dept. of Fish & Wildlife,
VT Environmental Board, VCGI,
VT Dept. of Forests, Parks and Recreation,
Vermont Agency of Natural Resources.
Map Projection: Transverse Mercator
Created on 12/7/04 by Matthew Lovely