

# Power-Law Size Distributions

Principles of Complex Systems | @pocsvox  
CSYS/MATH 300, Fall, 2017

Prof. Peter Dodds | @peterdodds

Dept. of Mathematics & Statistics | Vermont Complex Systems Center  
Vermont Advanced Computing Core | University of Vermont



Licensed under the Creative Commons Attribution-NonCommercial-ShareAlike 3.0 License.

PoCS | @pocsvox  
Power-Law Size  
Distributions

- Our Intuition
- Definition
- Examples
- Wild vs. Mild
- CCDFs
- Zipf's law
- Zipf  $\Leftrightarrow$  CCDF
- Appendix
- References

$$P(x) \sim x^{-\lambda}$$



1 of 56

## Outline

- Our Intuition
- Definition
- Examples
- Wild vs. Mild
- CCDFs
- Zipf's law
- Zipf  $\Leftrightarrow$  CCDF
- Appendix
- References

PoCS | @pocsvox  
Power-Law Size  
Distributions

- Our Intuition
- Definition
- Examples
- Wild vs. Mild
- CCDFs
- Zipf's law
- Zipf  $\Leftrightarrow$  CCDF
- Appendix
- References

$$P(x) \sim x^{-\lambda}$$



4 of 56

These slides are brought to you by:



PoCS | @pocsvox  
Power-Law Size  
Distributions

- Our Intuition
- Definition
- Examples
- Wild vs. Mild
- CCDFs
- Zipf's law
- Zipf  $\Leftrightarrow$  CCDF
- Appendix
- References

$$P(x) \sim x^{-\lambda}$$



2 of 56

Two of the many things we struggle with cognitively:

- Probability.
  - Ex. [The Monty Hall Problem.](#)
  - Ex. [Daughter/Son born on Tuesday.](#) (see next two slides; Wikipedia entry [here](#).)
- Logarithmic scales.

On counting and logarithms:



- Listen to Radiolab's 2009 piece: ["Numbers."](#)
- Later: [Benford's Law](#).

Also to be enjoyed: the magnificence of the [Dunning-Kruger effect](#)

PoCS | @pocsvox  
Power-Law Size  
Distributions

- Our Intuition
- Definition
- Examples
- Wild vs. Mild
- CCDFs
- Zipf's law
- Zipf  $\Leftrightarrow$  CCDF
- Appendix
- References



6 of 56

These slides are also brought to you by:

Special Guest Executive Producer: Pratchett



On Instagram at [pratchett\\_the\\_cat](#)

PoCS | @pocsvox  
Power-Law Size  
Distributions

- Our Intuition
- Definition
- Examples
- Wild vs. Mild
- CCDFs
- Zipf's law
- Zipf  $\Leftrightarrow$  CCDF
- Appendix
- References

$$P(x) \sim x^{-\lambda}$$



3 of 56

Homo probabilisticus?

The set up:

- A parent has two children.

Simple probability question:

- What is the probability that both children are girls?
- 1/4 ...

The next set up:

- A parent has two children.
- We know one of them is a girl.

The next probabilistic poser:

- What is the probability that both children are girls?
- 1/3 ...

PoCS | @pocsvox  
Power-Law Size  
Distributions

- Our Intuition
- Definition
- Examples
- Wild vs. Mild
- CCDFs
- Zipf's law
- Zipf  $\Leftrightarrow$  CCDF
- Appendix
- References



7 of 56

Try this one:

- A parent has two children.
- We know one of them is a girl born on a Tuesday.

Simple question #3:

- What is the probability that both children are girls?

Last:

- A parent has two children.
- We know one of them is a girl born on December 31.

And ...

- What is the probability that both children are girls?

PoCS | @pocsvox  
Power-Law Size Distributions

Our Intuition  
Definition  
Examples  
Wild vs. Mild  
CCDFs  
Zipf's law  
Zipf ⇔ CCDF  
Appendix  
References



8 of 56

Wealth distribution in the United States: [12]

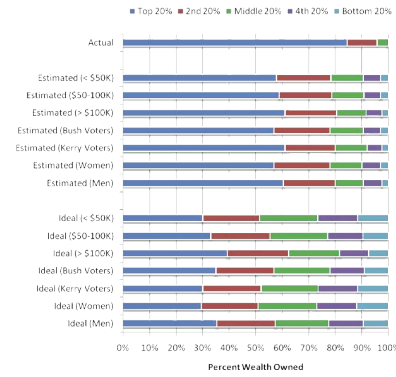


Fig. 3. The actual United States wealth distribution plotted against the estimated and ideal distributions of respondents' different income levels, political affiliations, and genders. Because of their small percentage share of total wealth, both the "4th 20%" value (0.2%) and the "Bottom 20%" value (0.1%) are not visible in the "Actual" distribution.

PoCS | @pocsvox  
Power-Law Size Distributions

Our Intuition  
Definition  
Examples  
Wild vs. Mild  
CCDFs  
Zipf's law  
Zipf ⇔ CCDF  
Appendix  
References



11 of 56

A highly watched video based on this research is [here](#).

Let's test our collective intuition:



Money  
≡  
Belief

Two questions about wealth distribution in the United States:

- Please estimate the percentage of all wealth owned by individuals when grouped into quintiles.
- Please estimate what you believe each quintile should own, ideally.
- Extremes: 100, 0, 0, 0, 0 and 20, 20, 20, 20, 20

PoCS | @pocsvox  
Power-Law Size Distributions

Our Intuition  
Definition  
Examples  
Wild vs. Mild  
CCDFs  
Zipf's law  
Zipf ⇔ CCDF  
Appendix  
References



9 of 56

The sizes of many systems' elements appear to obey an inverse power-law size distribution:

$$P(\text{size} = x) \sim c x^{-\gamma}$$

where  $0 < x_{\min} < x < x_{\max}$  and  $\gamma > 1$ .

- $x_{\min}$  = lower cutoff,  $x_{\max}$  = upper cutoff
- Negative linear relationship in log-log space:

$$\log_{10} P(x) = \log_{10} c - \gamma \log_{10} x$$

- We use base 10 because we are good people.

PoCS | @pocsvox  
Power-Law Size Distributions

Our Intuition  
Definition  
Examples  
Wild vs. Mild  
CCDFs  
Zipf's law  
Zipf ⇔ CCDF  
Appendix  
References



12 of 56

Wealth distribution in the United States: [12]

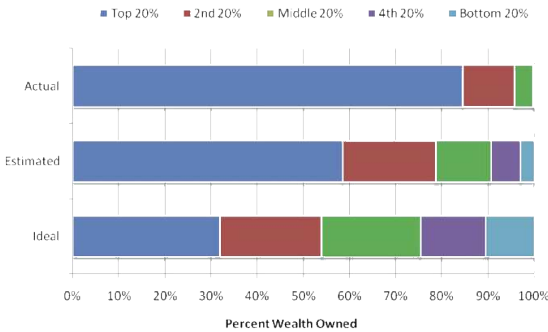


Fig. 2. The actual United States wealth distribution plotted against the estimated and ideal distributions across all respondents. Because of their small percentage share of total wealth, both the "4th 20%" value (0.2%) and the "Bottom 20%" value (0.1%) are not visible in the "Actual" distribution.

"Building a better America—One wealth quintile at a time"  
Norton and Arieli, 2011. [12]

PoCS | @pocsvox  
Power-Law Size Distributions

Our Intuition  
Definition  
Examples  
Wild vs. Mild  
CCDFs  
Zipf's law  
Zipf ⇔ CCDF  
Appendix  
References



10 of 56

Size distributions:

Usually, only the tail of the distribution obeys a power law:

$$P(x) \sim c x^{-\gamma} \text{ for } x \text{ large.}$$

- Still use term 'power-law size distribution.'
- Other terms:
  - Fat-tailed distributions.
  - Heavy-tailed distributions.

Beware:

- Inverse power laws aren't the only ones: [lognormals](#), [Weibull distributions](#), ...

PoCS | @pocsvox  
Power-Law Size Distributions

Our Intuition  
Definition  
Examples  
Wild vs. Mild  
CCDFs  
Zipf's law  
Zipf ⇔ CCDF  
Appendix  
References



13 of 56

## Size distributions:

Many systems have discrete sizes  $k$ :

- Word frequency
- Node degree in networks: # friends, # hyperlinks, etc.
- # citations for articles, court decisions, etc.

$$P(k) \sim ck^{-\gamma}$$

where  $k_{\min} \leq k \leq k_{\max}$

- Obvious fail for  $k = 0$ .
- Again, typically a description of distribution's tail.

PoCS | @pocsvox  
Power-Law Size Distributions

Our Intuition

Definition

Examples

Wild vs. Mild

CCDFs

Zipf's law

Zipf  $\Leftrightarrow$  CCDF

Appendix

References



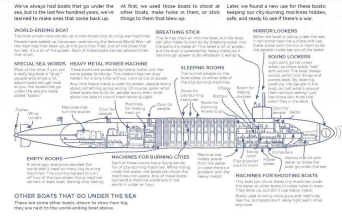
14 of 56



"Thing Explainer: Complicated Stuff in Simple Words" by Randall Munroe (2015). [10]



### BOAT THAT GOES UNDER THE SEA



Up goer five

PoCS | @pocsvox  
Power-Law Size Distributions

Our Intuition

Definition

Examples

Wild vs. Mild

CCDFs

Zipf's law

Zipf  $\Leftrightarrow$  CCDF

Appendix

References



17 of 56

## Word frequency:

Brown Corpus (~ 10<sup>6</sup> words):

rank	word	% q	rank	word	% q
1.	the	6.8872	1945.	apply	0.0055
2.	of	3.5839	1946.	vital	0.0055
3.	and	2.8401	1947.	September	0.0055
4.	to	2.5744	1948.	review	0.0055
5.	a	2.2996	1949.	wage	0.0055
6.	in	2.1010	1950.	motor	0.0055
7.	that	1.0428	1951.	fifteen	0.0055
8.	is	0.9943	1952.	regarded	0.0055
9.	was	0.9661	1953.	draw	0.0055
10.	he	0.9392	1954.	wheel	0.0055
11.	for	0.9340	1955.	organized	0.0055
12.	it	0.8623	1956.	vision	0.0055
13.	with	0.7176	1957.	wild	0.0055
14.	as	0.7137	1958.	Palmer	0.0055
15.	his	0.6886	1959.	intensity	0.0055

PoCS | @pocsvox  
Power-Law Size Distributions

Our Intuition

Definition

Examples

Wild vs. Mild

CCDFs

Zipf's law

Zipf  $\Leftrightarrow$  CCDF

Appendix

References



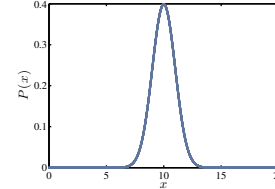
15 of 56

## The statistics of surprise—words:

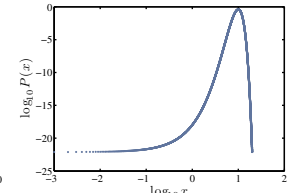
First—a Gaussian example:

$$P(x)dx = \frac{1}{\sqrt{2\pi}\sigma} e^{-(x-\mu)^2/2\sigma^2} dx$$

linear:



log-log



mean  $\mu = 10$ , variance  $\sigma^2 = 1$ .

Activity: Sketch  $P(x) \sim x^{-1}$  for  $x = 1$  to  $x = 10^7$ .

PoCS | @pocsvox  
Power-Law Size Distributions

Our Intuition

Definition

Examples

Wild vs. Mild

CCDFs

Zipf's law

Zipf  $\Leftrightarrow$  CCDF

Appendix

References



18 of 56

## Jonathan Harris's Wordcount:

A word frequency distribution explorer:

PoCS | @pocsvox  
Power-Law Size Distributions

Our Intuition

Definition

Examples

Wild vs. Mild

CCDFs

Zipf's law

Zipf  $\Leftrightarrow$  CCDF

Appendix

References

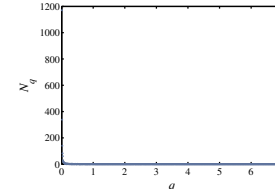


16 of 56

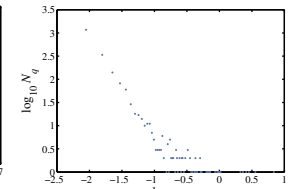
## The statistics of surprise—words:

Raw 'probability' (binned) for Brown Corpus:

linear:



log-log



$q_w$  = frequency of occurrence of word  $q$  (expressed as a percentage of all words in corpus).

$N_q$  = number of distinct words that have a frequency of occurrence  $q$ .

PoCS | @pocsvox  
Power-Law Size Distributions

Our Intuition

Definition

Examples

Wild vs. Mild

CCDFs

Zipf's law

Zipf  $\Leftrightarrow$  CCDF

Appendix

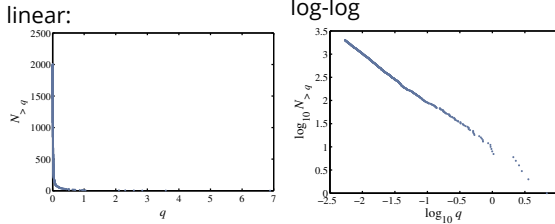
References



19 of 56

## The statistics of surprise—words:

### Complementary Cumulative Probability Distribution $N_{>q}$ :



Also known as the 'Exceedance Probability.'

PoCS | @pocsvox  
Power-Law Size Distributions

Our Intuition  
Definition  
Examples  
Wild vs. Mild  
CCDFs  
Zipf's law  
Zipf  $\leftrightarrow$  CCDF  
Appendix  
References



20 of 56

## The statistics of surprise:

From: "Quake Moves Japan Closer to U.S. and Alters Earth's Spin" by Kenneth Chang, March 13, 2011, NYT:

'What is perhaps most surprising about the Japan earthquake is how misleading history can be. In the past 300 years, no earthquake nearly that large—nothing larger than magnitude eight—had struck in the Japan subduction zone. That, in turn, led to assumptions about how large a tsunami might strike the coast.'

"It did them a giant disservice," said Dr. Stein of the geological survey. That is not the first time that the earthquake potential of a fault has been underestimated. Most geophysicists did not think the Sumatra fault could generate a magnitude 9.1 earthquake, ...'

PoCS | @pocsvox  
Power-Law Size Distributions

Our Intuition  
Definition  
Examples  
Wild vs. Mild  
CCDFs  
Zipf's law  
Zipf  $\leftrightarrow$  CCDF  
Appendix  
References



23 of 56

## My, what big words you have ...



Test capitalizes on word frequency following a heavily skewed frequency distribution with a decaying power-law tail.

PoCS | @pocsvox  
Power-Law Size Distributions

Our Intuition  
Definition  
Examples  
Wild vs. Mild  
CCDFs  
Zipf's law  
Zipf  $\leftrightarrow$  CCDF  
Appendix  
References

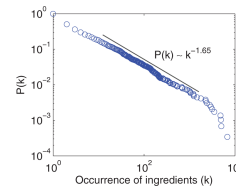


21 of 56



"Geography and similarity of regional cuisines in China"

Zhu et al., PLoS ONE, 8, e79161, 2013. [17]



Fraction of ingredients that appear in at least  $k$  recipes.

Oops in notation:  $P(k)$  is the Complementary Cumulative Distribution  $P_{\geq}(k)$

PoCS | @pocsvox  
Power-Law Size Distributions

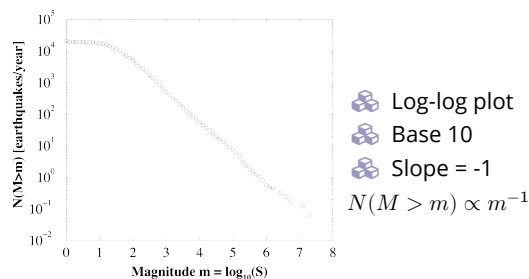
Our Intuition  
Definition  
Examples  
Wild vs. Mild  
CCDFs  
Zipf's law  
Zipf  $\leftrightarrow$  CCDF  
Appendix  
References



24 of 56

## The statistics of surprise:

### Gutenberg-Richter law



From both the very awkwardly similar Christensen et al. and Bak et al.: "Unified scaling law for earthquakes" [3, 1]

PoCS | @pocsvox  
Power-Law Size Distributions

Our Intuition  
Definition  
Examples  
Wild vs. Mild  
CCDFs  
Zipf's law  
Zipf  $\leftrightarrow$  CCDF  
Appendix  
References



22 of 56



"On a class of skew distribution functions"

Herbert A. Simon, Biometrika, 42, 425-440, 1955. [14]



"Power laws, Pareto distributions and Zipf's law"

M. E. J. Newman, Contemporary Physics, 46, 323-351, 2005. [11]



"Power-law distributions in empirical data"

Clauset, Shalizi, and Newman, SIAM Review, 51, 661-703, 2009. [4]

PoCS | @pocsvox  
Power-Law Size Distributions

Our Intuition  
Definition  
Examples  
Wild vs. Mild  
CCDFs  
Zipf's law  
Zipf  $\leftrightarrow$  CCDF  
Appendix  
References



25 of 56

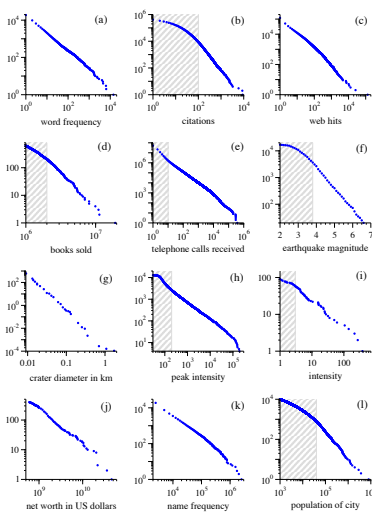


FIG. 4. Cumulative distributions of various phenomena. The distributions are shown on log-log axes. (a) Word frequency in the novel *Moby Dick* (1851). (b) Citations to papers published in 1981. (c) Number of occurrences of words in the novel *Moby Dick* (1851). (d) Number of copies of best-selling books sold in the US between 1895 and 1965. (e) Number of calls received by AT&T in 1992. (f) Magnitude of earthquakes between 1900 and 1992. (g) Diameter of craters on the moon. (h) Peak intensity of earthquakes between 1900 and 1992. (i) Intensity of craters on the moon. (j) Aggregate net worth in dollars of the richest individuals in the US in October 2000. (k) Frequency of occurrence of family names in the US in the year 1990. (l) Populations of US cities in the year 2000.

PoCS | @pocsvox  
Power-Law Size Distributions

Our Intuition  
Definition  
Examples  
Wild vs. Mild  
CCDFs  
Zipf's law  
Zipf ⇔ CCDF  
Appendix  
References



26 of 56

## Table 3 from Clauset, Shalizi, and Newman [4]:

Basic parameters of the data sets described in section 6, along with their power-law fits and the corresponding p-values (statistically significant values are denoted in bold).

Quantity	n	(α)	σ	x <sub>max</sub>	x <sub>min</sub>	α	n <sub>tail</sub>	p
count of word use	18855	11.14	148.33	14 086	7 ± 2	1.95(2)	2958 ± 987	<b>0.49</b>
protein interaction degree	1846	2.34	3.05	56	5 ± 2	3.1(3)	204 ± 263	0.31
metabolic degree	1841	5.68	17.81	468	4 ± 1	2.8(1)	748 ± 136	0.00
Internet degree	22688	5.63	37.83	2583	21 ± 9	2.12(9)	770 ± 1124	<b>0.29</b>
telephone calls received	51 360 423	3.88	179.09	375 746	120 ± 49	2.09(1)	102 592 ± 210 147	<b>0.63</b>
intensity of wars	115	15.70	49.97	382	2.1 ± 3.5	1.7(2)	70 ± 14	<b>0.29</b>
terrorist attack severity	9101	4.35	31.58	2749	12 ± 4	2.4(2)	547 ± 1663	<b>0.68</b>
HTTP size (kilobytes)	226 386	7.36	57.94	10 971	36.25 ± 22.74	2.48(5)	6794 ± 2232	0.00
species per genus	509	5.59	6.94	56	4 ± 2	2.4(2)	233 ± 138	<b>0.10</b>
bird species sightings	591	3384.36	10 952.34	138 705	6679 ± 2463	2.1(2)	66 ± 41	<b>0.55</b>
blackouts (×10 <sup>3</sup> )	211	253.87	610.31	7500	230 ± 90	2.3(3)	59 ± 35	<b>0.62</b>
sales of books (×10 <sup>3</sup> )	633	1986.67	1396.60	19 077	2400 ± 430	3.7(3)	139 ± 115	<b>0.66</b>
population of cities (×10 <sup>3</sup> )	19 447	9.00	77.83	8 009	52.46 ± 11.88	2.37(8)	580 ± 177	<b>0.76</b>
email address books size	4381	12.45	21.49	333	37 ± 21	3.5(6)	196 ± 449	<b>0.16</b>
forest fire size (acres)	203 785	0.90	20.99	4121	6324 ± 3487	2.2(3)	521 ± 6801	0.05
solar flare intensity	12 778	689.41	6520.59	231 300	323 ± 89	1.79(2)	1711 ± 384	<b>1.00</b>
quake intensity (×10 <sup>5</sup> )	19 302	24.54	563.83	63 096	0.794 ± 80.198	1.64(4)	11 697 ± 2159	0.00
religious followers (×10 <sup>6</sup> )	103	27.36	136.64	1050	3.85 ± 1.60	1.8(1)	39 ± 26	<b>0.42</b>
freq. of surnames (×10 <sup>3</sup> )	2753	50.59	113.99	2502	111.92 ± 40.67	2.5(2)	239 ± 215	<b>0.20</b>
net worth (mil. USD)	400	2388.69	4167.35	46 000	900 ± 364	2.3(1)	302 ± 77	0.00
citations to papers	415 229	16.17	44.02	8904	160 ± 35	3.16(6)	3455 ± 1859	<b>0.20</b>
papers authored	401 445	7.21	16.52	1416	133 ± 13	4.3(1)	988 ± 377	<b>0.90</b>
hits to web sites	119 724	9.83	392.52	129 641	2 ± 13	1.81(8)	50 981 ± 16 898	0.00
links to web sites	241 428 853	9.15	109 871.65	1 199 460	3654 ± 151	2.33(9)	28 986 ± 1560	0.00

We'll explore various exponent measurement techniques in assignments.

PoCS | @pocsvox  
Power-Law Size Distributions

Our Intuition  
Definition  
Examples  
Wild vs. Mild  
CCDFs  
Zipf's law  
Zipf ⇔ CCDF  
Appendix  
References



27 of 56

## power-law size distributions

### Gaussians versus power-law size distributions:

- Mediocristan versus Extremistan
- Mild versus Wild (Mandelbrot)
- Example: Height versus wealth.

### THE BLACK SWAN



Nassim Nicholas Taleb

- See "The Black Swan" by Nassim Taleb. [15]
- Terrible if successful framing: Black swans are not that surprising ...

PoCS | @pocsvox  
Power-Law Size Distributions

Our Intuition  
Definition  
Examples  
Wild vs. Mild  
CCDFs  
Zipf's law  
Zipf ⇔ CCDF  
Appendix  
References



30 of 56

PoCS | @pocsvox  
Power-Law Size Distributions

Our Intuition  
Definition  
Examples  
Wild vs. Mild  
CCDFs  
Zipf's law  
Zipf ⇔ CCDF  
Appendix  
References



28 of 56

## Size distributions:

### Some examples:

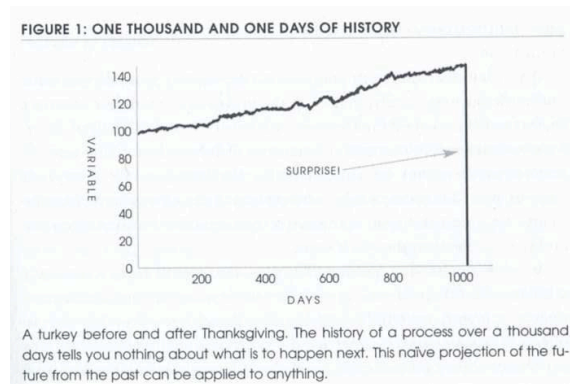
- Earthquake magnitude (Gutenberg-Richter law) [8, 1]  $P(M) \propto M^{-2}$
- # war deaths: [13]  $P(d) \propto d^{-1.8}$
- Sizes of forest fires [7]
- Sizes of cities: [14]  $P(n) \propto n^{-2.1}$
- # links to and from websites [2]
- Note: Exponents range in error

## Size distributions:

### More examples:

- # citations to papers: [5, 6]  $P(k) \propto k^{-3}$ .
- Individual wealth (maybe):  $P(W) \propto W^{-2}$ .
- Distributions of tree trunk diameters:  $P(d) \propto d^{-2}$ .
- The gravitational force at a random point in the universe: [9]  $P(F) \propto F^{-5/2}$ . (See the Holtsmark distribution and stable distributions.)
- Diameter of moon craters: [11]  $P(d) \propto d^{-3}$ .
- Word frequency: [14] e.g.,  $P(k) \propto k^{-2.2}$  (variable).
- # religious adherents in cults: [4]  $P(k) \propto k^{-1.8 \pm 0.1}$ .
- # sightings of birds per species (North American Breeding Bird Survey for 2003): [4]  $P(k) \propto k^{-2.1 \pm 0.1}$ .
- # species per genus: [16, 14, 4]  $P(k) \propto k^{-2.4 \pm 0.2}$ .

## Turkeys ...



From "The Black Swan" [15]

PoCS | @pocsvox  
Power-Law Size Distributions

Our Intuition  
Definition  
Examples  
Wild vs. Mild  
CCDFs  
Zipf's law  
Zipf ⇔ CCDF  
Appendix  
References



31 of 56

## Taleb's table <sup>[15]</sup>

### Mediocristan/Extremistan

- Most typical member is mediocre/Most typical is either giant or tiny
- Winners get a small segment/Winner take almost all effects
- When you observe for a while, you know what's going on/It takes a very long time to figure out what's going on
- Prediction is easy/Prediction is hard
- History crawls/History makes jumps
- Tyranny of the collective/Tyranny of the rare and accidental

PoCS | @pocsvox  
Power-Law Size Distributions

Our Intuition  
Definition  
Examples  
Wild vs. Mild  
CCDFs  
Zipf's law  
Zipf  $\leftrightarrow$  CCDF  
Appendix  
References



32 of 56

## And in general ...

### Moments:

- All moments depend only on cutoffs.
- No internal scale that dominates/matters.
- Compare to a Gaussian, exponential, etc.

### For many real size distributions: $2 < \gamma < 3$

- mean is finite (depends on lower cutoff)
- $\sigma^2 =$  variance is 'infinite' (depends on upper cutoff)
- Width of distribution is 'infinite'
- If  $\gamma > 3$ , distribution is less terrifying and may be easily confused with other kinds of distributions.

Insert question from assignment 3

PoCS | @pocsvox  
Power-Law Size Distributions

Our Intuition  
Definition  
Examples  
Wild vs. Mild  
CCDFs  
Zipf's law  
Zipf  $\leftrightarrow$  CCDF  
Appendix  
References



35 of 56

## Size distributions:



Power-law size distributions are sometimes called Pareto distributions after Italian scholar Vilfredo Pareto.

- Pareto noted wealth in Italy was distributed unevenly (80-20 rule; misleading).
- Term used especially by practitioners of the Dismal Science.

PoCS | @pocsvox  
Power-Law Size Distributions

Our Intuition  
Definition  
Examples  
Wild vs. Mild  
CCDFs  
Zipf's law  
Zipf  $\leftrightarrow$  CCDF  
Appendix  
References



33 of 56

## Moments

### Standard deviation is a mathematical convenience:

- Variance is nice analytically ...
- Another measure of distribution width:

$$\text{Mean average deviation (MAD)} = \langle |x - \langle x \rangle| \rangle$$

- For a pure power law with  $2 < \gamma < 3$ :

$$\langle |x - \langle x \rangle| \rangle \text{ is finite.}$$

- But MAD is mildly unpleasant analytically ...
- We still speak of infinite 'width' if  $\gamma < 3$ .

Insert question from assignment 2

PoCS | @pocsvox  
Power-Law Size Distributions

Our Intuition  
Definition  
Examples  
Wild vs. Mild  
CCDFs  
Zipf's law  
Zipf  $\leftrightarrow$  CCDF  
Appendix  
References



36 of 56

## Devilish power-law size distribution details:

### Exhibit A:

- Given  $P(x) = cx^{-\gamma}$  with  $0 < x_{\min} < x < x_{\max}$ , the mean is ( $\gamma \neq 2$ ):

$$\langle x \rangle = \frac{c}{2-\gamma} (x_{\max}^{2-\gamma} - x_{\min}^{2-\gamma}).$$

- Mean 'blows up' with upper cutoff if  $\gamma < 2$ .
- Mean depends on lower cutoff if  $\gamma > 2$ .
- $\gamma < 2$ : Typical sample is large.
- $\gamma > 2$ : Typical sample is small.

Insert question from assignment 2

PoCS | @pocsvox  
Power-Law Size Distributions

Our Intuition  
Definition  
Examples  
Wild vs. Mild  
CCDFs  
Zipf's law  
Zipf  $\leftrightarrow$  CCDF  
Appendix  
References



34 of 56

## How sample sizes grow ...

### Given $P(x) \sim cx^{-\gamma}$ :

- We can show that after  $n$  samples, we expect the largest sample to be

$$x_1 \gtrsim c' n^{1/(\gamma-1)}$$

- Sampling from a finite-variance distribution gives a much slower growth with  $n$ .

- e.g., for  $P(x) = \lambda e^{-\lambda x}$ , we find

$$x_1 \gtrsim \frac{1}{\lambda} \ln n.$$

Insert question from assignment 2

PoCS | @pocsvox  
Power-Law Size Distributions

Our Intuition  
Definition  
Examples  
Wild vs. Mild  
CCDFs  
Zipf's law  
Zipf  $\leftrightarrow$  CCDF  
Appendix  
References



37 of 56

Complementary Cumulative Distribution Function:  
CCDF:

$$\begin{aligned}
 P_{\geq}(x) &= P(x' \geq x) = 1 - P(x' < x) \\
 &= \int_{x'=x}^{\infty} P(x') dx' \\
 &\propto \int_{x'=x}^{\infty} (x')^{-\gamma} dx' \\
 &= \frac{1}{-\gamma + 1} (x')^{-\gamma+1} \Big|_{x'=x}^{\infty} \\
 &\propto x^{-\gamma+1}
 \end{aligned}$$

PoCS | @pocsvox  
Power-Law Size  
Distributions

Our Intuition  
Definition  
Examples  
Wild vs. Mild  
CCDFs  
Zipf's law  
Zipf  $\leftrightarrow$  CCDF  
Appendix  
References



39 of 56

Zipfian rank-frequency plots

George Kingsley Zipf:

- Noted various rank distributions have power-law tails, often with exponent -1 (word frequency, city sizes, ...)
- Zipf's 1949 [Magnum Opus](#)

We'll study Zipf's law in depth ...

PoCS | @pocsvox  
Power-Law Size  
Distributions

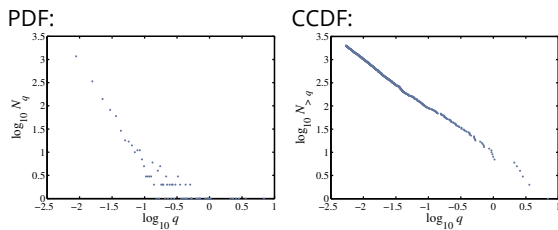
Our Intuition  
Definition  
Examples  
Wild vs. Mild  
CCDFs  
Zipf's law  
Zipf  $\leftrightarrow$  CCDF  
Appendix  
References



42 of 56

Complementary Cumulative Distribution Function:  
CCDF:

- $P_{\geq}(x) \propto x^{-\gamma+1}$
- Use when tail of  $P$  follows a power law.
- Increases exponent by one.
- Useful in cleaning up data.



PoCS | @pocsvox  
Power-Law Size  
Distributions

Our Intuition  
Definition  
Examples  
Wild vs. Mild  
CCDFs  
Zipf's law  
Zipf  $\leftrightarrow$  CCDF  
Appendix  
References



40 of 56

Zipfian rank-frequency plots

Zipf's way:

- Given a collection of entities, rank them by size, largest to smallest.
- $x_r$  = the size of the  $r$ th ranked entity.
- $r = 1$  corresponds to the largest size.
- Example:  $x_1$  could be the frequency of occurrence of the most common word in a text.
- Zipf's observation:

$$x_r \propto r^{-\alpha}$$

PoCS | @pocsvox  
Power-Law Size  
Distributions

Our Intuition  
Definition  
Examples  
Wild vs. Mild  
CCDFs  
Zipf's law  
Zipf  $\leftrightarrow$  CCDF  
Appendix  
References



43 of 56

Complementary Cumulative Distribution Function:

- Same story for a discrete variable:  $P(k) \sim ck^{-\gamma}$ .

$$\begin{aligned}
 P_{\geq}(k) &= P(k' \geq k) \\
 &= \sum_{k'=k}^{\infty} P(k) \\
 &\propto k^{-\gamma+1}
 \end{aligned}$$

- Use integrals to approximate sums.

PoCS | @pocsvox  
Power-Law Size  
Distributions

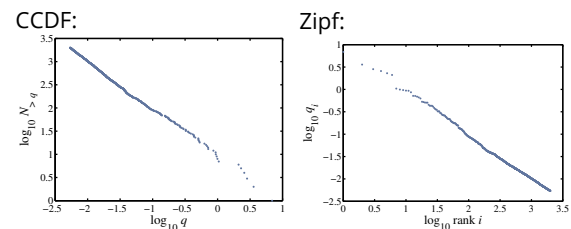
Our Intuition  
Definition  
Examples  
Wild vs. Mild  
CCDFs  
Zipf's law  
Zipf  $\leftrightarrow$  CCDF  
Appendix  
References



41 of 56

Size distributions:

Brown Corpus (1,015,945 words):



- The, of, and, to, a, ... = 'objects'
- 'Size' = word frequency
- Beep: (Important) CCDF and Zipf plots are related ...

PoCS | @pocsvox  
Power-Law Size  
Distributions

Our Intuition  
Definition  
Examples  
Wild vs. Mild  
CCDFs  
Zipf's law  
Zipf  $\leftrightarrow$  CCDF  
Appendix  
References

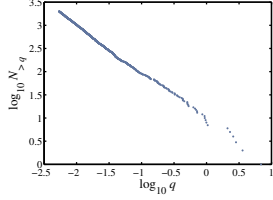


44 of 56

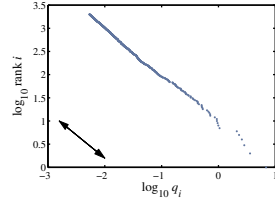
## Size distributions:

Brown Corpus (1,015,945 words):

CCDF:



Zipf:



- The, of, and, to, a, ... = 'objects'
- 'Size' = word frequency
- Beep:** (Important) CCDF and Zipf plots are related
- ...

PoCS | @pocsvox  
Power-Law Size  
Distributions

Our Intuition  
Definition  
Examples  
Wild vs. Mild  
CCDFs  
Zipf's law  
Zipf ⇔ CCDF  
Appendix  
References



45 of 56

PoCS | @pocsvox  
Power-Law Size  
Distributions

Our Intuition  
Definition  
Examples  
Wild vs. Mild  
CCDFs  
Zipf's law  
Zipf ⇔ CCDF  
Appendix  
References



48 of 56

## Observe:

- $NP_{\geq}(x)$  = the number of objects with size at least  $x$  where  $N$  = total number of objects.
- If an object has size  $x_r$ , then  $NP_{\geq}(x_r)$  is its rank  $r$ .
- So

$$x_r \propto r^{-\alpha} = (NP_{\geq}(x_r))^{-\alpha}$$

$$\propto x_r^{(-\gamma+1)(-\alpha)} \text{ since } P_{\geq}(x) \sim x^{-\gamma+1}.$$

We therefore have  $1 = (-\gamma + 1)(-\alpha)$  or:

$$\alpha = \frac{1}{\gamma - 1}$$

- A rank distribution exponent of  $\alpha = 1$  corresponds to a size distribution exponent  $\gamma = 2$ .

PoCS | @pocsvox  
Power-Law Size  
Distributions

Our Intuition  
Definition  
Examples  
Wild vs. Mild  
CCDFs  
Zipf's law  
Zipf ⇔ CCDF  
Appendix  
References



46 of 56

PoCS | @pocsvox  
Power-Law Size  
Distributions

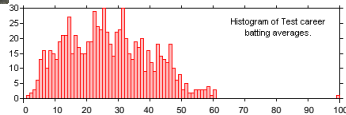
Our Intuition  
Definition  
Examples  
Wild vs. Mild  
CCDFs  
Zipf's law  
Zipf ⇔ CCDF  
Appendix  
References



49 of 56

## The Don.

Extreme deviations in test cricket:



- Don Bradman's batting average = 166% next best.
- That's pretty solid.
- Later in the course: Understanding success—is the Mona Lisa like Don Bradman?

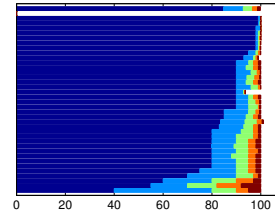
PoCS | @pocsvox  
Power-Law Size  
Distributions

Our Intuition  
Definition  
Examples  
Wild vs. Mild  
CCDFs  
Zipf's law  
Zipf ⇔ CCDF  
Appendix  
References

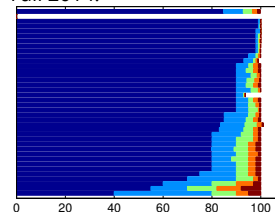


47 of 56

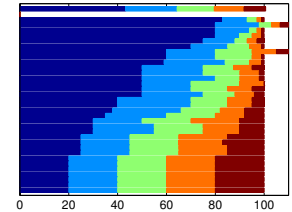
Actual:  
Fall 2016:



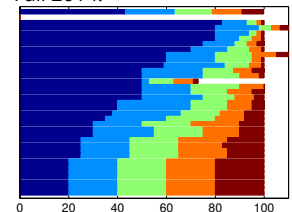
Actual:  
Fall 2014:



Ideal:  
Fall 2016:



Ideal:  
Fall 2014:



PoCS | @pocsvox  
Power-Law Size  
Distributions

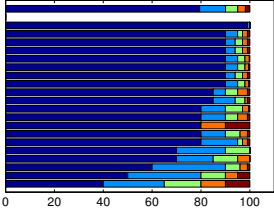
Our Intuition  
Definition  
Examples  
Wild vs. Mild  
CCDFs  
Zipf's law  
Zipf ⇔ CCDF  
Appendix  
References



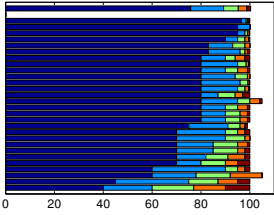
50 of 56



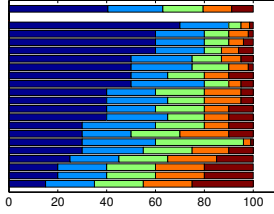
Actual:  
Fall 2013:



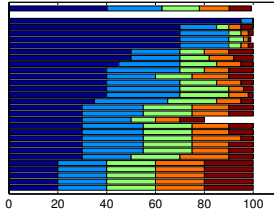
Spring 2013:



Ideal:  
Fall 2013:



Spring 2013:



PoCS | @pocsvox  
Power-Law Size  
Distributions

Our Intuition  
Definition  
Examples  
Wild vs. Mild  
CCDFs  
Zipf's law  
Zipf  $\leftrightarrow$  CCDF  
Appendix  
References



51 of 56

## References III

- [9] J. Holtsmark.  
Über die verbreiterung von spektrallinien.  
[Ann. Phys.](#), 58:577–, 1919.
- [10] R. Munroe.  
[Thing Explainer: Complicated Stuff in Simple Words.](#)  
Houghton Mifflin Harcourt, 2015.
- [11] M. E. J. Newman.  
Power laws, Pareto distributions and Zipf's law.  
[Contemporary Physics](#), 46:323–351, 2005. [pdf](#)
- [12] M. I. Norton and D. Ariely.  
Building a better America—One wealth quintile at a time.  
[Perspectives on Psychological Science](#), 6:9–12, 2011. [pdf](#)

PoCS | @pocsvox  
Power-Law Size  
Distributions

Our Intuition  
Definition  
Examples  
Wild vs. Mild  
CCDFs  
Zipf's law  
Zipf  $\leftrightarrow$  CCDF  
Appendix  
References



54 of 56

## References I

- [1] P. Bak, K. Christensen, L. Danon, and T. Scanlon.  
Unified scaling law for earthquakes.  
[Phys. Rev. Lett.](#), 88:178501, 2002. [pdf](#)
- [2] A.-L. Barabási and R. Albert.  
Emergence of scaling in random networks.  
[Science](#), 286:509–511, 1999. [pdf](#)
- [3] K. Christensen, L. Danon, T. Scanlon, and P. Bak.  
Unified scaling law for earthquakes.  
[Proc. Natl. Acad. Sci.](#), 99:2509–2513, 2002. [pdf](#)
- [4] A. Clauset, C. R. Shalizi, and M. E. J. Newman.  
Power-law distributions in empirical data.  
[SIAM Review](#), 51:661–703, 2009. [pdf](#)

PoCS | @pocsvox  
Power-Law Size  
Distributions

Our Intuition  
Definition  
Examples  
Wild vs. Mild  
CCDFs  
Zipf's law  
Zipf  $\leftrightarrow$  CCDF  
Appendix  
References



52 of 56

## References IV

- [13] L. F. Richardson.  
Variation of the frequency of fatal quarrels with magnitude.  
[J. Amer. Stat. Assoc.](#), 43:523–546, 1949.
- [14] H. A. Simon.  
On a class of skew distribution functions.  
[Biometrika](#), 42:425–440, 1955. [pdf](#)
- [15] N. N. Taleb.  
[The Black Swan.](#)  
Random House, New York, 2007.
- [16] G. U. Yule.  
A mathematical theory of evolution, based on the conclusions of Dr J. C. Willis, F.R.S.  
[Phil. Trans. B](#), 213:21–87, 1925. [pdf](#)

PoCS | @pocsvox  
Power-Law Size  
Distributions

Our Intuition  
Definition  
Examples  
Wild vs. Mild  
CCDFs  
Zipf's law  
Zipf  $\leftrightarrow$  CCDF  
Appendix  
References



55 of 56

## References II

- [5] D. J. de Solla Price.  
Networks of scientific papers.  
[Science](#), 149:510–515, 1965. [pdf](#)
- [6] D. J. de Solla Price.  
A general theory of bibliometric and other cumulative advantage processes.  
[J. Amer. Soc. Inform. Sci.](#), 27:292–306, 1976. [pdf](#)
- [7] P. Grassberger.  
Critical behaviour of the Drossel-Schwabl forest fire model.  
[New Journal of Physics](#), 4:17.1–17.15, 2002. [pdf](#)
- [8] B. Gutenberg and C. F. Richter.  
Earthquake magnitude, intensity, energy, and acceleration.  
[Bull. Seism. Soc. Am.](#), 499:105–145, 1942. [pdf](#)

PoCS | @pocsvox  
Power-Law Size  
Distributions

Our Intuition  
Definition  
Examples  
Wild vs. Mild  
CCDFs  
Zipf's law  
Zipf  $\leftrightarrow$  CCDF  
Appendix  
References



53 of 56

## References V

- [17] Y.-X. Zhu, J. Huang, Z.-K. Zhang, Q.-M. Zhang, T. Zhou, and Y.-Y. Ahn.  
Geography and similarity of regional cuisines in China.  
[PLoS ONE](#), 8:e79161, 2013. [pdf](#)
- [18] G. K. Zipf.  
[Human Behaviour and the Principle of Least-Effort.](#)  
Addison-Wesley, Cambridge, MA, 1949.

PoCS | @pocsvox  
Power-Law Size  
Distributions

Our Intuition  
Definition  
Examples  
Wild vs. Mild  
CCDFs  
Zipf's law  
Zipf  $\leftrightarrow$  CCDF  
Appendix  
References



56 of 56