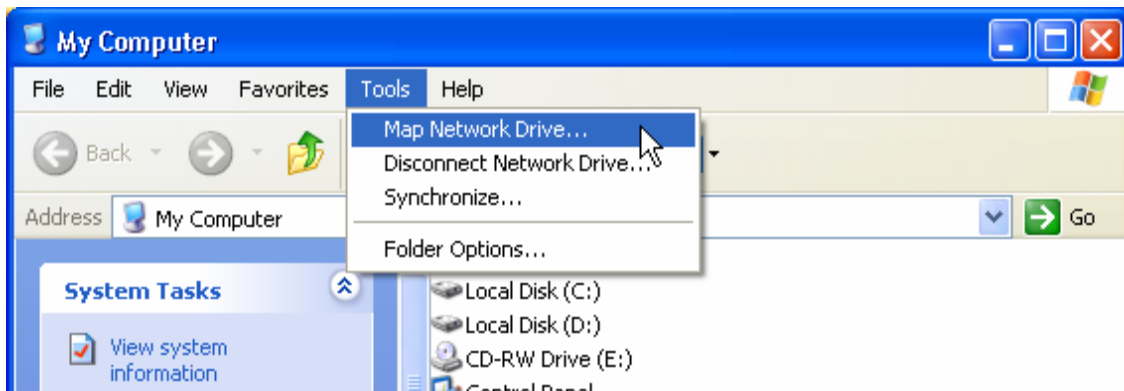


Sharing Data over a Network

For your student projects, you may want to access the data on the shared GISdata drive. This will allow you to access:

- ArcGIS Tutorial Guides and Documentation
- Digital Ortho Photos (VT DOQ, NAIP, and historical air photos)
- VCGI data in a personal geodatabase format (.gdb)
- Plus much much more!

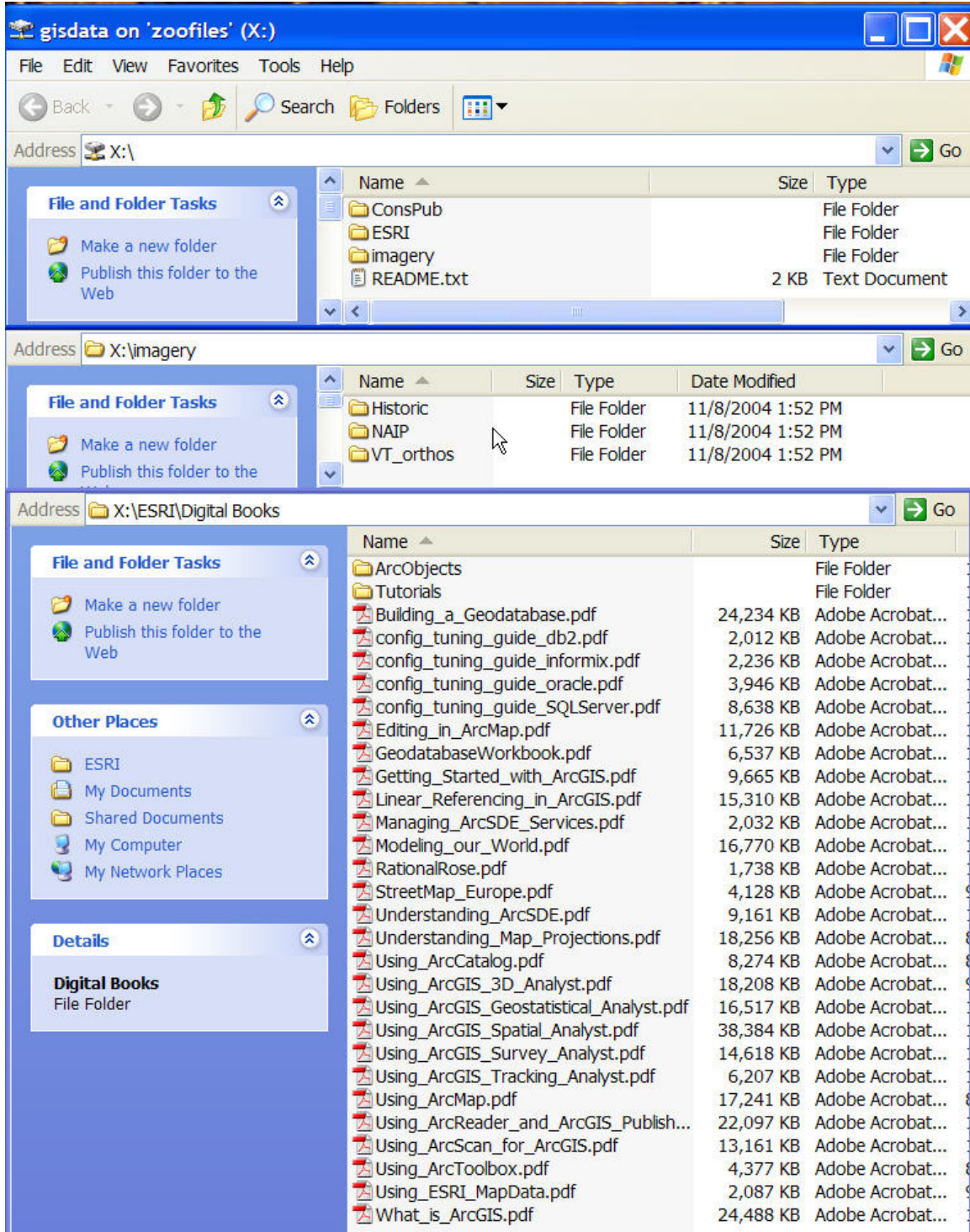
Mapping a drive to another computer over a network allows you to access those remote accounts just like it was a hard disk on the PC you are using. The PCs in Aiken room 222 automatically map a drive to your personal Zoo account (and assign Drive Z) when you log on to the PC. For other PCs, however, you will need to map a drive. To map a drive, click on the “**My Computer**” icon in the **Start** list. Under the **TOOLS** menu, select **MAP NETWORK DRIVE**.



The system will select an available drive letter and then type in “\\zoofiles\gisdata”.



Check it out!



Compiled by L. A. Morrissey, RSEN/UMV