
Detecting temporal trends in species assemblages with bootstrapping procedures and hierarchical models

Nicholas J. Gotelli, Robert M. Dorazio, Aaron M. Ellison and Gary D. Grossman

Phil. Trans. R. Soc. B 2010 **365**, doi: 10.1098/rstb.2010.0262, published 27 October 2010

Supplementary data

["Data Supplement"](#)

<http://rstb.royalsocietypublishing.org/content/suppl/2010/10/09/365.1558.3621.DC1.html>

["Audio Supplement"](#)

<http://rstb.royalsocietypublishing.org/content/suppl/2010/12/08/365.1558.3621.DC2.html>

References

[This article cites 31 articles, 1 of which can be accessed free](#)

<http://rstb.royalsocietypublishing.org/content/365/1558/3621.full.html#ref-list-1>

[Article cited in:](#)

<http://rstb.royalsocietypublishing.org/content/365/1558/3621.full.html#related-urls>

Subject collections

Articles on similar topics can be found in the following collections

[ecology](#) (448 articles)

[environmental science](#) (207 articles)

Email alerting service

Receive free email alerts when new articles cite this article - sign up in the box at the top right-hand corner of the article or click [here](#)

Detecting temporal trends in species assemblages with bootstrapping procedures and hierarchical models

Nicholas J. Gotelli^{1,*}, Robert M. Dorazio², Aaron M. Ellison³
and Gary D. Grossman⁴

¹*Department of Biology, University of Vermont, Burlington, VT 05405, USA*

²*Southeast Ecological Science Center, U.S. Geological Survey and Department of Statistics, University of Florida, Gainesville, FL 32611, USA*

³*Harvard Forest, Harvard University, Petersham, MA 01366, USA*

⁴*Warnell School of Forestry & Natural Resources, University of Georgia, Athens, GA 30602, USA*

Quantifying patterns of temporal trends in species assemblages is an important analytical challenge in community ecology. We describe methods of analysis that can be applied to a matrix of counts of individuals that is organized by species (rows) and time-ordered sampling periods (columns). We first developed a bootstrapping procedure to test the null hypothesis of random sampling from a stationary species abundance distribution with temporally varying sampling probabilities. This procedure can be modified to account for undetected species. We next developed a hierarchical model to estimate species-specific trends in abundance while accounting for species-specific probabilities of detection. We analysed two long-term datasets on stream fishes and grassland insects to demonstrate these methods. For both assemblages, the bootstrap test indicated that temporal trends in abundance were more heterogeneous than expected under the null model. We used the hierarchical model to estimate trends in abundance and identified sets of species in each assemblage that were steadily increasing, decreasing or remaining constant in abundance over more than a decade of standardized annual surveys. Our methods of analysis are broadly applicable to other ecological datasets, and they represent an advance over most existing procedures, which do not incorporate effects of incomplete sampling and imperfect detection.

Keywords: temporal trends; species abundance; null model; hierarchical model; stream fishes; grassland insects

1. INTRODUCTION

Quantifying change in the structure of plant and animal communities is an important challenge for ecology in the twenty-first century (Walther *et al.* 2002). Species composition and abundance can respond directly to long-term changes in abiotic factors (Dunson & Travis 1991) and indirectly to changes in the occurrence or abundance of other species (White *et al.* 2006). Dramatic and rapid changes in community structure may result from the addition or loss of keystone species (Mills *et al.* 1993), foundation species (Ellison *et al.* 2005), ecosystem engineers (Jones *et al.* 1994) and some (but not all) non-native species (Manchester & Bullock 2000). Other changes may be more subtle, because the abundance of individual species can gradually increase or decrease over long periods of time, as in scenarios of a ‘shifting baseline’ (Pauly 1995). Long-term trends may be difficult to detect because of substantial

short-term noise and variability in abundances between consecutive samples.

However, not all observed changes in community structure through time are biologically relevant. Most measures of community structure and diversity are sensitive to sampling effort and to the number of individuals counted (Gotelli & Colwell 2001). These quantities are rarely constant through time, even with standardized monitoring programmes. Rare species, in particular, are expected to occur more often when sampling is more thorough (Chao *et al.* 2009). Even the appearance of a previously unrecorded species need not signal a true change in community structure. Biodiversity sampling is labour intensive and notoriously incomplete (Lawton *et al.* 1998), and ‘new’ species occurrence records—especially of plants and invertebrates—are routinely made, even in sites that have been well-sampled for many years (e.g. Longino *et al.* 2002).

A variety of univariate and multivariate methods have been proposed to quantify the degree of community change through time (Collins *et al.* 2000; Fujiwara & Mohr 2009), and to detect temporal trends in community structure (Clarke 1993; Solow 1994). However, with few exceptions (e.g. Dorazio *et al.* 2010), existing methods do not account for incomplete sampling and

*Author for correspondence (ngotelli@uvm.edu).

Electronic supplementary material is available at <http://dx.doi.org/10.1098/rstb.2010.0262> or via <http://rstb.royalsocietypublishing.org>.

One contribution of 16 to a Discussion Meeting Issue ‘Biological diversity in a changing world’.

Table 1. Empirical details of two data matrices and null model results for temporal change analysis. See text for definitions of variables.

source	Grossman <i>et al.</i> (1982)	KBS (1995)
taxon	stream fishes	grassland insects
study site	central Illinois stream reach	successional grassland plot
sampling method	seining	sticky traps
observed number of species	55	9
estimated number of undetected species (Chao 1984)	16	0
sampling interval	~ annual	annual
timespan	September 1963–September 1974	1989–2002
number of sampling dates (T)	15	14
average count per sample (minimum, maximum)	914 (87, 5344)	401 (71, 1152)
average count per species (minimum, maximum)	266 (1, 4304)	624 (2, 2793)
total count (N)	14 142	5614
observed temporal change index (TC)	0.256	156.90
average of 1000 simulated values of TC (95% confidence interval)	0.095 (0.082, 0.111)	39.16 (31.81, 47.22)
$P(\text{observed TC} \text{null model})$	<0.001	<0.001

imperfect detection. Instead, most methods assume that the absence of a species from a sampling period represents a ‘true’ zero, and not a detection error (Royle & Dorazio 2008). Most procedures also ignore species that may have been present in a region, but were never detected in any of the samples (Colwell & Coddington 1994).

In this study, we develop new methods for quantifying temporal trends in species abundances that account for errors in detection of individuals. Our methods are appropriate for analysing species-specific counts of individuals recorded from repeated surveys of a single site. We first develop a bootstrap procedure for testing a null hypothesis in which the counts are assumed to have arisen from sampling a stationary distribution of relative species abundances with temporally varying sampling probabilities. We then develop a hierarchical model of the counts to estimate species-specific trends in abundance while accounting for species-specific probabilities of detection. Both methods of analysis are illustrated for two long-term datasets on stream fishes and grassland insects.

2. MATERIAL AND METHODS

(a) *Data structure*

The data for our analyses may be organized as a matrix of counts of individuals of S species (rows) recorded during T successive sampling periods (columns). The matrix entry y_{ij} is the number of individuals of species i that were observed at sampling time j ($i = 1, \dots, S$; $j = 1, \dots, T$). This simple data structure arises in many ecological studies in which species assemblages are repeatedly sampled at a site. Although the samples do not have to be evenly spaced in time, our methods are intended for analysis of long-term trends in abundance, not for short-term or periodic changes in abundance (e.g. seasonality). We illustrate our methods with two datasets: a 13-year record of annual counts of 55 fish species seined from a mid-western USA stream (Grossman *et al.* 1982), and a

14-year record of annual counts of nine insect species collected from sticky traps in a successional grassland plot at the USA Kellogg Biological Station (KBS 1995). Table 1 summarizes sampling details for each of these studies.

The sampling design and collecting methods for the stream fish study have been described previously (Whittaker 1976; Grossman *et al.* 1982, 1985) and are only summarized here. A 120 m long \times 23 m wide section of Otter Creek, Vigo County, IN, USA, was surveyed annually between 1962 and 1974. The site contained a diversity of substrata and depths and can be considered representative of many streams in the midwestern USA. During the study period, the site retained a relatively stable physical structure. Fishes were sampled using a seine, and all collections were supervised by a single investigator, so effort was relatively consistent. There was some minor variation present in sampling efficiency produced by differences in stream depth among years, although the investigators always attempted to keep the area sampled constant. All fishes captured were identified to species and counted, except in a few cases in which a species was extremely abundant. In those cases, numerical estimates were derived from subsamples of the total catch. All fishes were immediately returned live to the site, except for voucher specimens, which were preserved for later identification (Grossman *et al.* 1982, 1985).

The insect data were collected as part of the Long Term Ecological Research (LTER) network (LTER 2007) at the KBS in northern Michigan, USA. At KBS, a set of seven 1 ha crop rotational treatments have been replicated in six blocks on a single 60 ha plot (KBS 1995). We used data from treatment 7, a native successional treatment that was abandoned after spring plowing in 1989. The plots are surveyed with yellow sticky traps that are replaced weekly from May to August. These traps collect insect predators, many of which are identified only to family level (Chrysopidae and Lampyridae). We used data for

nine taxa that were identified to species and were sampled in all years of the study. Within each sampling season, we pooled data from all sticky traps and all plots to generate annual counts for each species.

(b) Null model analysis

In this section we describe a null model for detecting temporal trends in species' abundances. We use the term 'null model' to represent a model wherein an $S \times T$ matrix of counts of individuals is assumed to arise by randomly selecting individuals from the species assemblage according to each species' relative abundance and a set of temporally varying sampling probabilities. The key issue is that no particular ecological process or mechanism is assumed to have generated the matrix of counts; thus the model incorporates simple sampling effects, but is 'null' with respect to processes that might induce trends in species abundance (Gotelli & Graves 1996). The total number of individuals of species i in all sampling periods is

$$m_i = \sum_{j=1}^T y_{ij}. \quad (2.1)$$

The total number of individuals of all species observed during sampling period j is

$$n_j = \sum_{i=1}^S y_{ij}. \quad (2.2)$$

Let N equal the total number of individuals summed across all species and samples

$$N = \sum_{i=1}^S \sum_{j=1}^T y_{ij} = \sum_{i=1}^S m_i = \sum_{j=1}^T n_j. \quad (2.3)$$

We define the relative abundance of species i in the source pool of N individuals as

$$s_i = \frac{m_i}{N}. \quad (2.4)$$

Similarly, we define the relative sampling intensity during the j th survey as

$$q_j = \frac{n_j}{N}. \quad (2.5)$$

Under the assumptions of the null model, s_i is regarded as the probability that an individual drawn from the source pool of N individuals belongs to species i and q_j is regarded as the probability that an individual is observed in the j th sampling period, regardless of species.

To conduct a bootstrap test of the null model, we first randomly assign each of the N individuals in the total collection to a particular sample, with probability q_j . Once all the individuals are assigned, we then assign them species identities by sampling randomly with replacement from the distribution of s_i values. This two-step process does not depend on the order of conditioning; the same distribution would be obtained by first assigning individuals to species using the s_i values, and then assigning these individuals to particular samples using the q_j values.

This null model describes a multinomial sampling process that is conditional on N , the total number of individuals observed. The simulated number of individuals y_{ij} of species i in sample j depends on s_i , the proportional representation of species i in the source pool, q_j , the proportion of individuals sampled at time j , and N . The null hypothesis is that variability among species in temporal trends is no greater than would be expected from this simple model of sampling with replacement from an underlying stationary distribution of relative abundance. The alternative hypothesis is that at least some species in the assemblage are systematically increasing or decreasing, leading to changes in relative abundance that cannot be accounted for entirely by sampling effects.

The null hypothesis is defined by the following hierarchical model:

$$n_1, n_2, \dots, n_T \sim \text{multinomial}(N, q_1, q_2, \dots, q_T) \quad (2.6)$$

and

$$y_{1j}, y_{2j}, \dots, y_{Sj} \sim \text{multinomial}(n_j, s_1, s_2, \dots, s_S) \quad (2.7)$$

and our randomization procedure is entirely consistent with this model. Based on this model, the marginal distribution of the counts is multinomial

$$y_{11}, y_{21}, \dots, y_{ST} \sim \text{multinomial}(N, s_1 q_1, s_2 q_1, \dots, s_S q_T). \quad (2.8)$$

Therefore, under the null hypothesis the expected value of each count is proportional to the product of species relative abundance and year-specific sampling probability.

To estimate temporal trends from the observed data, we first fit a simple linear model to the count data for each species i

$$y_{ij} = \beta_{0i} + \beta_{1i} t_j + \varepsilon_{ij}, \quad (2.9)$$

where t_j is time (in arbitrary units of years, months, or time-steps), β_{0i} is the intercept, β_{1i} is the slope of the regression for species i and the error term ε_{ij} has a normal distribution ($\varepsilon_{ij} \sim N(0, \sigma_i^2)$).

We are interested in β_{1i} , because it measures the simple temporal trend in abundance for species i . Temporal change (TC) in the entire assemblage can then be quantified as the sample variance of the estimated β_{1i} values

$$\text{TC} = \frac{1}{S-1} \sum_{i=1}^S (\beta_{1i} - \bar{\beta}_1)^2. \quad (2.10)$$

The larger the TC, the more heterogeneity there is in the temporal trends of the component species, and the more change in composition of the assemblage that will be seen at future sampling dates. As described below, the number of species generated in the null assemblages was not constant. However, for both the real and the simulated matrices, TC was calculated only for species that were present at least once in the matrix. Following standard procedures for resampling tests (Manly 2009), we generated 1000 null assemblages, and calculated TC for each. We estimate the probability of obtaining TC if the null hypothesis

were true by comparing the observed TC to the histogram of simulated TC values.

Because the results are potentially sensitive to the assumption of simple linear trends in y_{ij} , we fit two alternative regression models based on log–log and log–linear transformations of $(y_{ij} + 1)$ and t_j . The same transformations were applied to the real and the simulated data. Although these alternative models incorporated nonlinear trends in species temporal trajectories, the transformations had no qualitative effect on the outcome of the null model tests. Therefore, we present results only from analyses of the untransformed data fit with a linear trend line.

(c) *Undetected species*

The construction of the null matrix is similar to a simulation of rarefaction (Sanders 1968; Hurlbert 1971), in which a small assemblage is simulated by random draws of subsamples of n_j individuals from the larger sample of N . However, in rarefaction, sampling is done without replacement (Simberloff 1978). Because our null model treats the source pool as a permanent stationary distribution, we sampled from it with replacement. In practice, the results will not differ unless the sample sizes are so small that n_j is a relatively large fraction of N , which is not the case for these datasets. Rarefaction also conditions on n_j , the observed count in a particular sample, whereas our multinomial model conditions on N , the total number of individuals.

This procedure implicitly addresses detection error because species (especially rare ones) that are present in the aggregated collection N may not be represented in any particular sample n_j . In some null assemblages, species that were very rare in the original dataset may be missing from all n_j samples. Because biodiversity sampling is notoriously incomplete, there are also likely to be rare species in the assemblage that were never encountered in the original samples (Colwell & Coddington 1994). We expanded our null model to incorporate these undetected species. We first estimated the minimum number of undetected species, \hat{S} using a bias-corrected version of the familiar Chao2 estimator (Chao 1984; eqn (2.4) in Colwell 2009)

$$\hat{S} = \left(\frac{T-1}{T} \right) \left(\frac{Q_1(Q_1-1)}{2(Q_2+1)} \right), \quad (2.11)$$

where Q_1 is the number of species represented in exactly 1 time period ('uniques'), Q_2 is the number of species represented in exactly two time periods ('duplicates') and T is the number of samples. The Chao2 index estimates the number of undetected species in the entire assemblage, not the number that may be undetected in any single sample. For the stream fish matrix, the estimated number of undetected species (rounded to the nearest whole integer) was 16. For the insect matrix, sampling was restricted to nine common species, and the estimated number of undetected species was 0.

Once the number of undetected species was estimated, it was necessary to assign them each a relative abundance s_i , so they could be included in

the simulation. Estimating these s_i values would require knowledge of the precise form of the species abundance distribution, a long-standing unsolved problem in ecology (McGill *et al.* 2007). As a simplifying first approximation, we assumed that s_i for each undetected species was equal to $0.5 \cdot s_i$ for the least abundant species observed in the assemblage. The reasoning is that if any of these undetected species occurred at a frequency greater than this, they would probably have been detected at least once in the original sample. For the stream fish data, s_i for each of the 16 undetected species was set at 3.414135×10^{-5} . Because many of the undetected species are probably much more rare than this, our procedure allows for the greatest possible influence of undetected species. Nevertheless, the results for the stream fish matrix were identical with and without the inclusion of undetected species. However, because the observed number of species is always a biased under-estimator of true species richness, we present the full analyses here with the undetected species included in the null model.

If the observed value of TC is larger than those of 950 of the 1000 simulated TC values ($p < 0.05$, one-tailed test), then the temporal trends in the set of observed species are more heterogeneous than can be accounted for by the null model: at least some species are either increasing or decreasing more rapidly than would be expected from sampling effects and undetected species. The null model was programmed and implemented in the statistical language R (R Development Core Team 2008; see electronic supplementary material, appendix A).

(d) *Hierarchical model of trend in abundances*

The null model provides a simple test for heterogeneity in species trends. If this null hypothesis is rejected, the next step is to estimate the rate of change in abundance of each species. As before, y_{ij} is the count of species i in sample j . We assume that the count y_{ij} depends on the abundance N_{ij} present during the j th survey and on each individual's probability of capture p_{ij} , as follows:

$$y_{ij} | N_{ij}, p_{ij} \sim \text{binomial}(N_{ij}, p_{ij}). \quad (2.12)$$

To estimate trend, we assume population abundances can be described as

$$N_{ij} | \lambda_{ij} \sim \text{Poisson}(\lambda_{ij}) \quad (2.13)$$

and

$$\lambda_{ij} = \lambda_{i0} \exp(r_i t_j), \quad (2.14)$$

where λ_{ij} denotes mean abundance of species i during survey j and where t_j denotes the year of the j th survey. Trend in λ_{ij} values is specified using the familiar exponential growth model (equation (2.14)), which includes a species-specific intercept parameter λ_{i0} and a net population growth rate parameter r_i .

Note that N_{ij} is not actually observed. N_{ij} is a parameter of the model that represents the number of individuals of species i which are present and available to be captured during the j th survey. The observation y_{ij} can be interpreted as a negatively biased estimator

of N_{ij} , with the level of bias depending on the magnitude of p_{ij} , the unknown probability of capture for individuals of species i .

In the absence of replicated observations, we cannot estimate temporal changes in both N_{ij} and p_{ij} . Therefore, we assume that capture probabilities vary among species but not among surveys (i.e. we assume $p_{ij} = p_i$). Even with this simplifying assumption, the hierarchical model composed of equations (2.12)–(2.14) contains more parameters than can be estimated from the data. To solve this problem, N_{ij} may be eliminated from the model by integrating the joint distribution of y_{ij} and N_{ij} . This integration can be done analytically to obtain the following marginalized version of the hierarchical model:

$$y_{ij}|p_i, \lambda_{i0}, r_i \sim \text{Poisson}(p_i \lambda_{i0} \exp(r_i t_j)). \quad (2.15)$$

Note that this model may be viewed conceptually as a Poisson regression model. For example, let μ_{ij} denote the Poisson mean for y_{ij} . The logarithm of μ_{ij} is a linear combination of the marginal model's parameters

$$\log(\mu_{ij}) = \log(p_i) + \log(\lambda_{i0}) + r_i t_j. \quad (2.16)$$

However, p_i and λ_{i0} are not identifiable parameters in equation (2.16) (i.e. both parameters cannot be estimated); therefore, we combine these parameters into a common regression intercept parameter (say, $a_i = \log(p_i \lambda_{i0})$) to obtain

$$\log(\mu_{ij}) = a_i + r_i t_j. \quad (2.17)$$

From this equation, the T observations, $y_{i1}, y_{i2}, \dots, y_{iT}$, can be used to estimate the parameters a_i and r_i . We are interested primarily in the latter parameter r_i , which denotes the trend in abundance of species i ; however, our formulation of the intercept parameter a_i reveals explicitly the combined roles of mean abundance and capture probability in the model.

The model specified by equations (2.15) and (2.17) can be fitted to each species separately. However, doing so may produce estimates of trend that are unstable or highly imprecise for species whose abundance appears to be low (as indicated by counts that contain several zeros and ones). Therefore, we extend the model as follows:

$$r_i|\beta, \sigma \sim \text{normal}(\beta, \sigma^2) \quad (2.18)$$

where β denotes the average trend in abundance among species in this assemblage and σ denotes the level of variation in r_i values among species. This distributional assumption allows the counts of all species to be analysed jointly so that information associated with species of moderate or high abundance can be used to stabilize the estimates of trend for species of low apparent abundance. Nevertheless, even with this assumption, there were not enough data to reliably estimate trends for very rare species that were represented by less than 10 individuals in the entire survey (25 of 55 stream fish species, and two of nine insect species).

Equation (2.18) implies an exchangeability of trend parameters among species. This exchangeability formalizes the notion that although abundances may be

increasing, decreasing or constant for any particular species, each is also a member of a common assemblage. We expect that the temporal trends of the species in the stream fish assemblage are more similar to one another than they are to, say, the temporal trends of the species in the grassland insect assemblage. A restricted version of this model that corresponds to the null model assumes an identical growth rate $r_i = \beta$ for all species, so that $\sigma = 0$. We can fit this restricted model and compare it with the unrestricted model to assess whether the data support the null hypothesis that all species abundances have an identical trend.

(e) Method of estimation

The hierarchical model described by equations (2.15), (2.16) and (2.18) may be fitted by maximizing the likelihood function obtained by integrating away the latent trend parameters. In our situation, however, this approach is counter-productive. In addition to the minor technical challenges of computing the integrals numerically, the trend parameters r_i are the quantities of primary scientific interest. Estimates of these parameters and their uncertainties are actually needed to solve the inference problem. We therefore adopt a Bayesian approach to inference, which allows every parameter in the model to be estimated directly, including the species-specific trends in abundance.

In a Bayesian analysis, all inferences are based on the joint posterior distribution of model parameters. In our case the unnormalized, probability density function (pdf) of this distribution is

$$\begin{aligned} \pi(\mathbf{a}, \mathbf{r}, \beta, \sigma | \mathbf{Y}) &\propto \pi(\beta, \sigma, \mathbf{a}) \prod_{i=1}^S g(r_i | \beta, \sigma) \\ &\times \prod_{j=1}^T f(y_{ij} | \exp(a_i + r_i t_j)), \end{aligned} \quad (2.19)$$

where $\mathbf{a} = (a_1, \dots, a_n)'$, $\mathbf{r} = (r_1, \dots, r_n)'$, and $\mathbf{Y} = (\mathbf{y}_1, \dots, \mathbf{y}_n)'$. Here, $g(\cdot | \beta, \sigma)$ denotes the pdf of a normal distribution with mean β and variance σ^2 , $f(\cdot | \mu_{ij})$ denotes the probability mass function of a Poisson distribution with mean μ_{ij} , and $\pi(\beta, \sigma, \mathbf{a})$ denotes the pdf of the prior distribution of the parameters β , σ , and \mathbf{a} .

The posterior pdf cannot be written in closed form owing to the analytically intractable integrals in the normalizing constant (not shown in equation (2.19)). Therefore, we estimated the model's parameters using Markov chain Monte Carlo algorithms (Robert & Casella 2004) to obtain an arbitrarily large sample of the joint posterior distribution. Specifically, we fit the model using the WinBUGS software (Lunn *et al.* 2000), which is an implementation of the BUGS language for specifying models and doing Bayesian analyses (Gilks *et al.* 1994).

To obtain the posterior sample, we assumed a set of mutually independent noninformative prior distributions for β , σ and \mathbf{a} . We assumed normal $(0, 100^2)$ priors for β and a_i and a uniform $(0, 10)$ prior for σ . Each of five Markov chains was independently initialized and computed for a total of 21 000 draws. The first 1000 draws in each chain were discarded as

'burn-in', and every fifth draw in the rest of each chain was retained to form the posterior sample. Consequently, these calculations yielded a posterior sample of 20 000 draws, which was used to compute estimates of the model's parameters and their 95% credible intervals (see electronic supplementary material, appendix B).

3. RESULTS

(a) Null model analysis

For the stream fish data, there was a non-significant decreasing trend in total abundance (figure 1), caused primarily by extremely high abundances in the November 1966 sample ($n_8 = 5344$ individuals). For the null model analysis, this decreasing trend leads to the expectation of negative slopes for individual species, with a moderate amount of variation among species (figure 2*a*). However, the observed slopes were much more heterogeneous than this expectation: several species showed sharply increasing or decreasing trend lines (figure 2*b*), and the observed TC index was larger than that of all 1000 simulated assemblages (table 1).

For the insect data, there was a marginally non-significant increasing trend in total abundance (figure 3), with systematically greater abundances during the final sampling years. For the null assemblages created from this matrix, most species had increasing trend lines (figure 4*a*). However, the observed slopes were again much more heterogeneous than expected (figure 4*b*). As with the stream fish data, the observed heterogeneity among slopes (TC) was greater than that of any of the simulated assemblages (table 1).

(b) Trends in abundances

For the stream fish data, the hierarchical model identified seven species with significant increases in abundance, 17 species with significant declines in abundance and six species with no significant trend (figure 5). A negative estimate of average trend, $\hat{\beta} = -0.152$ (95% credible interval: $(-0.289, -0.024)$), also indicates that species with declining abundances outnumbered those with increasing abundances. There is little doubt that trends in population abundance differed substantially among species. The posterior distribution of σ (figure 6*a*) provides virtually no support for the hypothesis that $\sigma = 0$.

For the grassland insect data, the hierarchical model identified two species with significant increases in abundance, three species with significant declines in abundance and two species with no significant trend (figure 7). The estimate of average trend, $\hat{\beta} = -0.026$ (95% credible interval: $(-0.352, 0.297)$), reflects the nearly equal numbers of species with increasing and decreasing abundances. As with the stream fish data, the posterior distribution of σ (figure 6*b*) does not support the null hypothesis ($\sigma = 0$) of identical trend lines for these seven species.

4. DISCUSSION

The null model and the hierarchical model provide complementary information on temporal trends, and

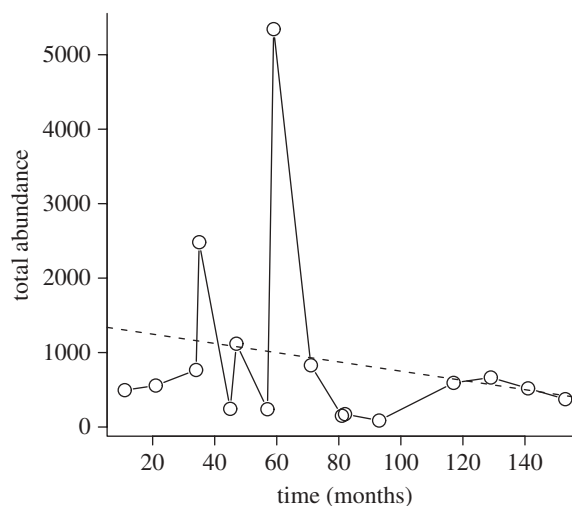


Figure 1. Temporal trends in total abundance for the stream fish samples of Grossman *et al.* (1982). The dashed line indicates the regression line for a simple linear model ($n_i = 1371 - 6.212 t_j$; $r^2 = 0.04$; $p = 0.446$).

they both point to strong temporal re-organization of stream fish and insect grassland assemblages over periods greater than a decade. Because the insects were sampled in a successional plot, it is no surprise that strong temporal trends would be detected, as vegetation structure and arthropod prey assemblages were systematically changing through time. In fact, the two most rapidly increasing species, *Harmonia axyridis* and *Hippodamia glacialis*, never appeared in any of the traps until 6 and 7 years, respectively, after the sampling began. This is exactly the pattern that would be expected in a classic facilitation model of succession (Connell & Slatyer 1977). On the other hand, the abundance of the most common species in the samples, *Coccinella septempunctata* ($\bar{x} = 200$ individuals per year), did not change significantly during the 14-year successional sequence (figure 7).

The pattern for the stream fishes is more complex. Although no obvious physical changes were observed in the habitat during the 15-year sampling period, 17 species showed significant declines, whereas only seven species increased in abundance. The causal mechanisms behind these patterns are unclear because both generalist and specialist species were found in both categories, as were representatives of most North American taxonomic groups. Perhaps the preponderance of declining populations suggests that some species successfully invaded the site early in the time series, but were not able to sustain populations through local reproduction and began to decline. It is probable that flow variation plays some role in these trends, perhaps facilitating establishment of species in benign periods and causing substantial mortality during periods of high water (Grossman *et al.* 1982, 1998). High flow events may cause substantial mortality in stream fishes, especially if they occur during the reproductive period and destroy an entire year-class (Grossman *et al.* 1982, 1998). However, there was no evidence during the sampling period of declining flows or increased numbers of extreme flow events that might be linked to the decreasing abundance of 17 of the 55 species

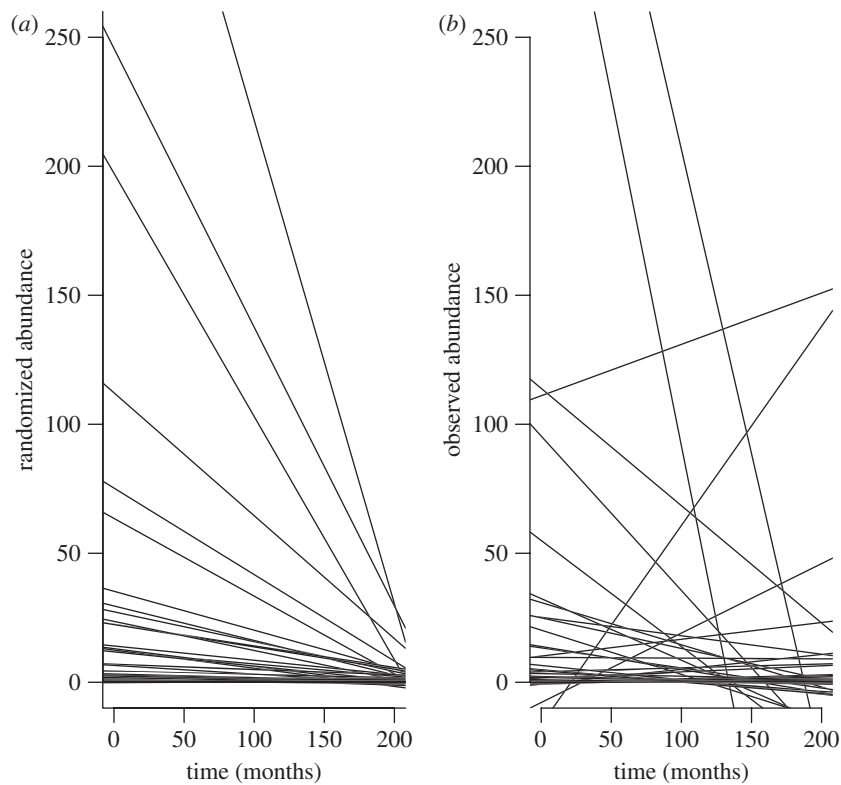


Figure 2. Observed and simulated trend lines for the stream fish data of Grossman *et al.* (1982). (a) Results of a single replicate of the null model simulation, in which total abundances for each species are sampled randomly from the abundance distribution of all species pooled through time. See text for details of the simulation model. Each line is the least-squares regression for one of the simulated species. (b) Same graph for the observed data.

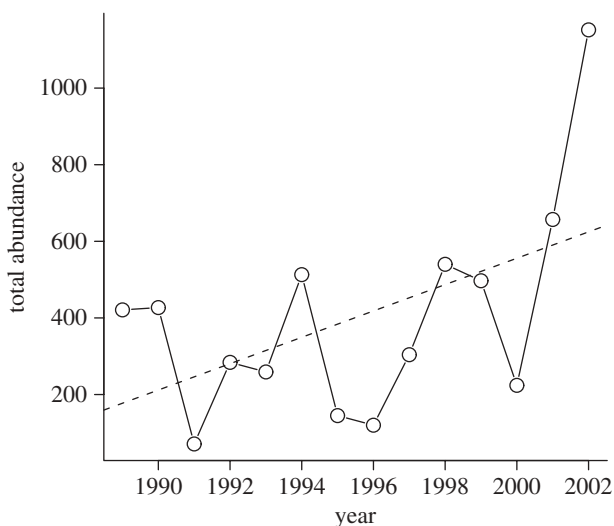


Figure 3. Temporal trends in total abundance for the insect samples of the successional plot. The dashed line indicates the regression line for a simple linear model ($n_t = -68\,253.0 + 34.4 t_j$; $r^2 = 0.27$; $p = 0.057$).

(Grossman & Sabo 2010). The decreasing trends in abundance of many stream fish species (figure 5) are consistent with a shifting baseline scenario, but the causes of these declines are still unknown.

The results of both the null model and the hierarchical model are potentially sensitive to the functional form that is used to describe temporal trends. For the null model analysis, the results for these datasets were the same when the trends were fit with linear,

semi-logarithmic, or log–log transformations of the original data. The estimated heterogeneity among species in temporal trends does not seem to be sensitive to the fitting procedure, perhaps because deviations caused by extreme sample numbers (such as the high counts in the stream fish dataset in 1966) are also incorporated into the pattern in the null assemblages. Both the null model and the hierarchical model assume that species are independent of one another. However, it is unclear how the violation of this assumption (from strong species interactions) would systematically affect the estimates of temporal trends in abundance.

Because the hierarchical model is being used for parameter estimates of change (rather than just a simple dichotomous null model test), it is potentially more sensitive to violation of its assumptions. As we noted, one important assumption in this model is that capture probabilities are constant through time. Although this assumption may not be true, it probably matches the perspective of most field biologists, who typically assume that long-term monotonic changes in species counts with standardized sampling methods primarily reflect changes in abundance, rather than changes in detection or capture probabilities.

If species-specific capture probabilities are not constant, the magnitude of the deviations between observed and expected counts may be inflated. As long as these deviations do not vary systematically with time, the point estimates of trend will not be affected, although the credible intervals may be too narrow. Alternatively, if the deviations between expected and observed counts vary systematically

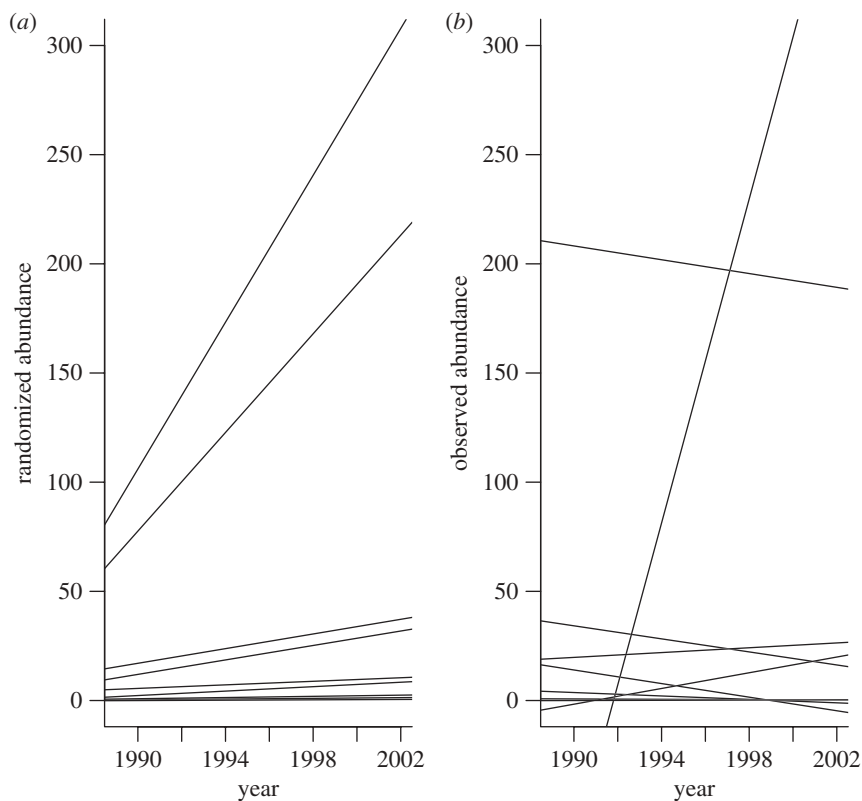


Figure 4. Observed and simulated trend lines for the insect data from the successional plot. Details as in figure 2.

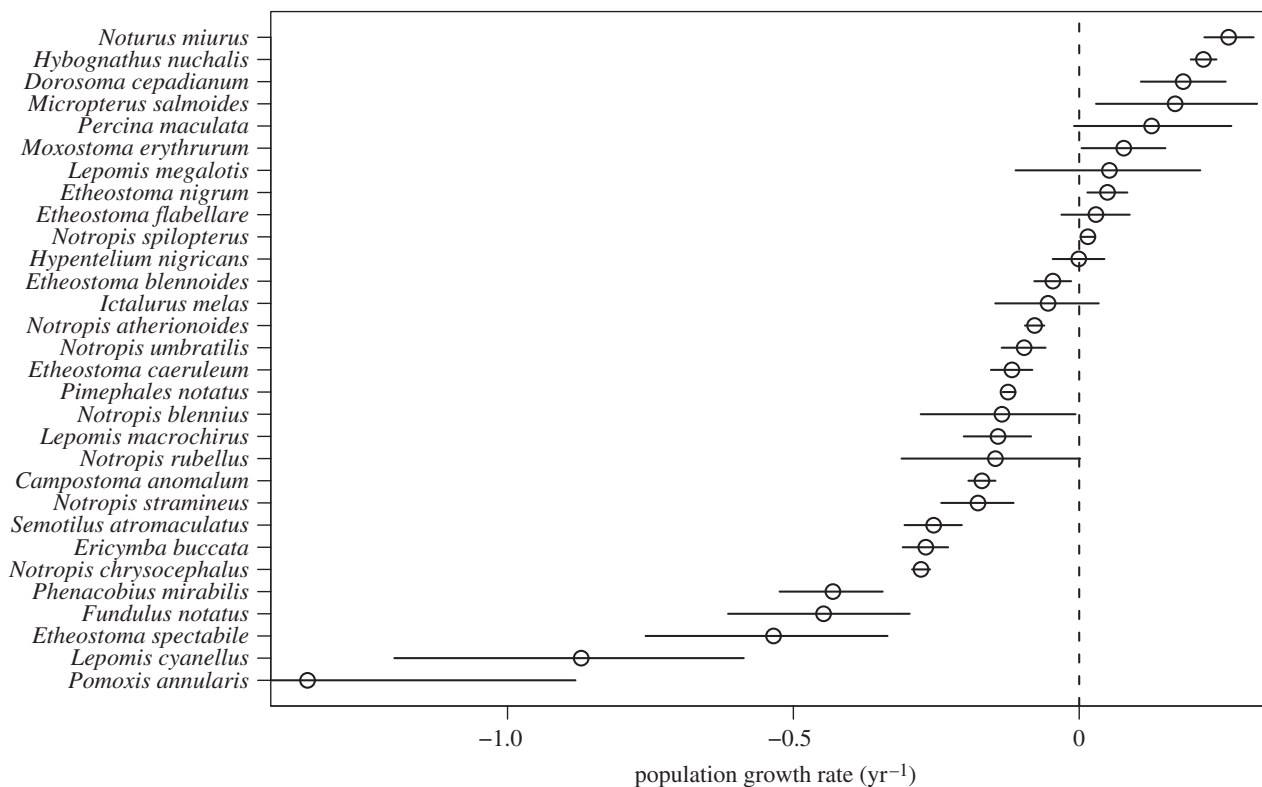


Figure 5. Hierarchical model estimates of r_i , the intrinsic rate of increase ($= \ln(\lambda)$) for 30 species of stream fishes. Each circle represents the estimated r_i , and the error bar is the asymmetrical 95% credible interval.

with time, say changing from positive to negative values, the trend estimates will be very sensitive to an incorrect assumption of constant capture probability. For the datasets we analysed, there was no evidence of a systematic lack of fit (figure 8).

In the hierarchical model, the assumption of constant sampling probabilities was necessary only because of the extremely simple and unreplicated structure of the data matrix. With replication, it may be possible to estimate parameters for temporal

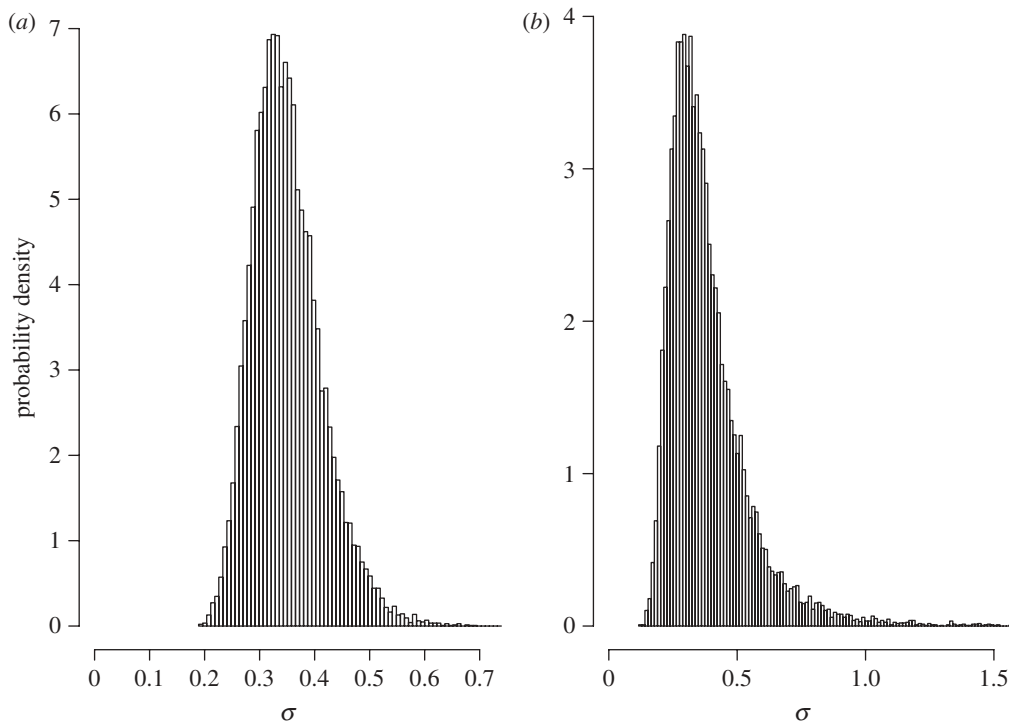


Figure 6. Posterior distribution of σ , the variation among species in temporal trends, estimated from the hierarchical model (equation (2.19)) by Markov chain Monte Carlo simulation. (a) Stream fishes. (b) Grassland insects.

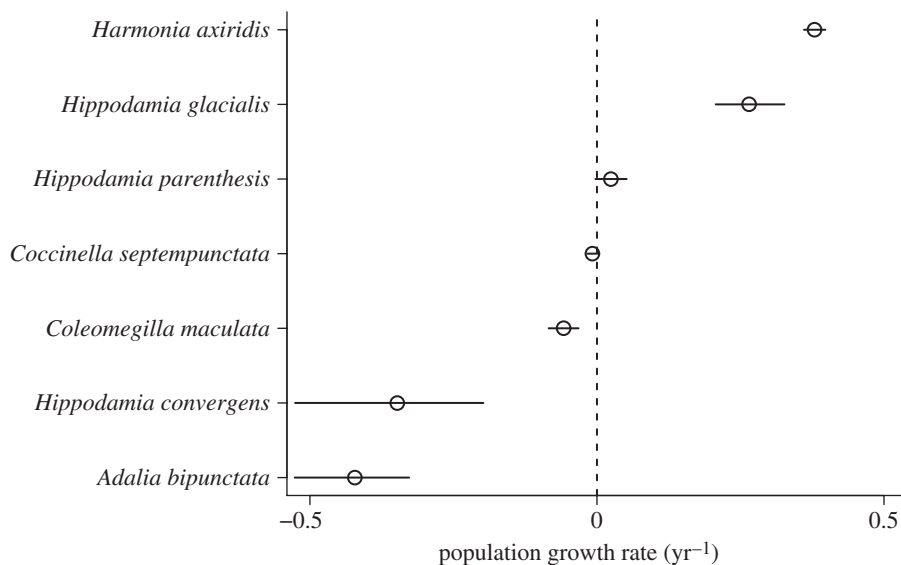


Figure 7. Hierarchical model estimates of r_i , the intrinsic rate of increase ($= \ln(\lambda)$) for seven species of grassland insects. Details as in figure 5.

trends in both abundance and detection probabilities. For example, the KBS insect data actually consist of weekly sticky trap counts collected from six replicated plots. Rather than pooling the data as we have done in this analysis, the individual trap records could be fit to a more complex hierarchical model (Royle & Dorazio 2008; Kery *et al.* 2009). The hierarchical model could also be expanded to incorporate species-specific covariates \mathbf{Z} (such as body size, geographical range size, or degree of habitat specialization) that might be of interest for conservation purposes. Species-specific covariates could be used to model either the mean structure of the elements of \mathbf{r} in equation (2.18) or their covariances.

Both the bootstrap test and the hierarchical model assume that changes in abundance through time are monotonic. If species show more complex patterns of temporal change (such as periodic fluctuations), these could be accommodated by fitting polynomial or sine functions to the time series. However, at least for these datasets, diagnostic analysis of residuals indicated little evidence for departures from linearity over the time periods that were sampled. Moreover, a monotonic function is appropriate for very short data series such as these ($T = 15$ samples for stream fishes and $T = 14$ samples for grassland insects).

Finally, the frequent occurrence of rare species in natural assemblages continues to pose statistical

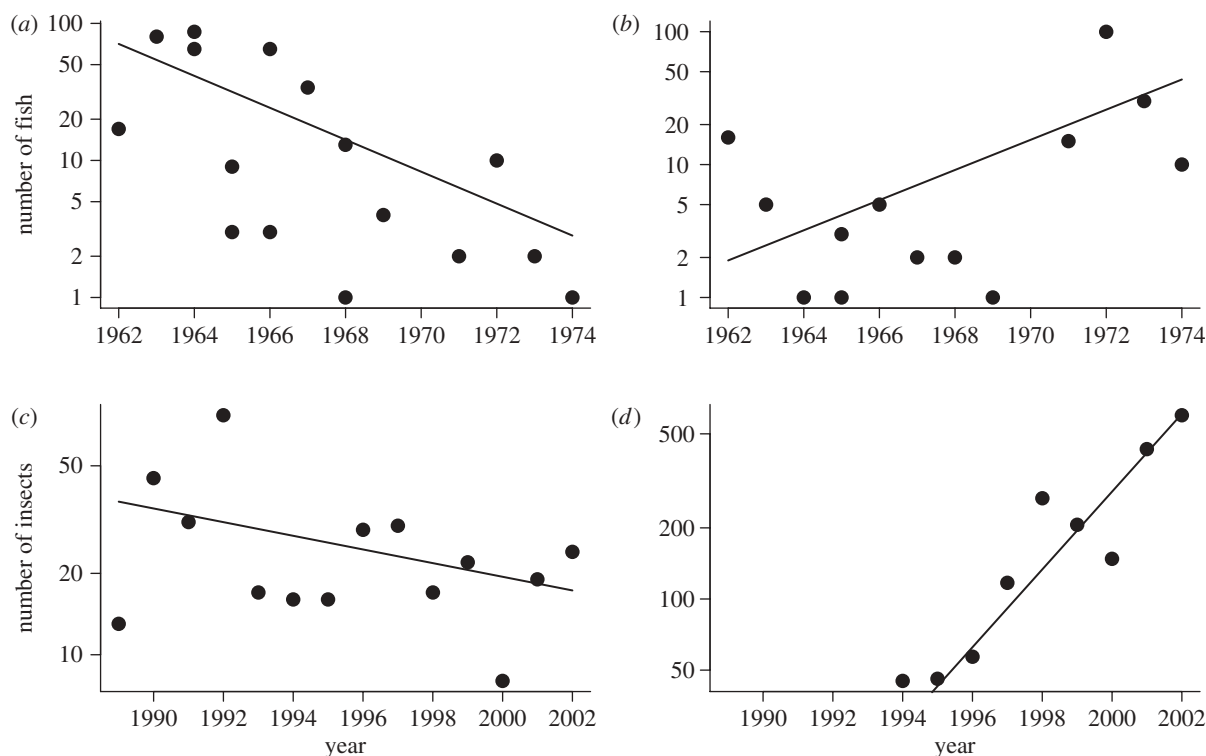


Figure 8. Estimated trends for representative stream fish and insect species. (a,b) Estimated trends in captures of stream fish (shown by lines) of two species ((a) *Ericymba buccata* and (b) *Noturus miurus*) superimposed on the observed counts of these species. Ordinate is logarithmically scaled. Three zero-valued counts (for years 1964, 1966 and 1968) of *N. miurus* are not shown. (c,d) Trends for insect species: (c) *Coleomegilla maculata* and (d) *Harmonia axiridis*. Five zero-valued counts (for years 1989–1993) of *H. axiridis* are not shown.

challenges. In the null model, all species, no matter how rare, are included in the analysis, and the null assemblages even incorporate the possibility of species that were never detected in any of the samples. In theory, rare species can contribute to the size of the observed TC index. For example, if all of the rare species occurred in only the very first or the very last sample, the sample variance in the trend lines would tend to be large compared to that found for the null assemblages. However, less extreme distributions of rare species look very similar to those generated by the null model, and therefore would not contribute substantially to the TC index.

In the hierarchical model, the assumption of exchangeability of r_i values allowed us to use information from common species to estimate trends for less common species. Nevertheless, when abundance is so low that there are fewer than 10 individuals counted in 14 or more consecutive annual samples, estimating temporal trends with any statistical model is a dubious exercise. For these cases, auxiliary information, stratified sampling and additional data may be necessary (Dixon *et al.* 2005).

In summary, quantifying temporal trends in species abundances is an important forecasting problem. Given the accelerating rates of habitat alteration and global climate change, the strong heterogeneity that we detected in the stream fish and grassland insect datasets (figures 5 and 7) may be typical; it seems unlikely to us that most long-term temporal trends will be accounted for entirely by the sampling effects in our null model. In these cases, the hierarchical models

provide a sensible framework for predicting what the future may hold.

We thank Anne Chao and two anonymous reviewers for comments that improved the manuscript. N.J.G. was supported by the U.S. National Sciences Foundation (NSF DEB-0541936) and the U.S. Department of Energy (022 821). G.D.G. was supported by the Warnell School of Forestry and Natural Resources and U.S. Department of Agriculture (USDA) Forest Service McIntire-Stennis program grant GEO-00 144-MS. Portions of this work represent a contribution from the Harvard Forest Long-Term Ecological Research Site, supported by NSF 06-20 443. This work was also facilitated by meetings at the Binary Matrices Working Group at the National Institute for Mathematical and Biological Synthesis, sponsored by NSF, the U.S. Department of Homeland Security, and the USDA through NSF Award no. EF-0832858, with additional support from the University of Tennessee, Knoxville.

REFERENCES

- Chao, A. 1984 Non-parametric estimation of the number of classes in a population. *Scand. J. Statist.* **11**, 265–270.
- Chao, A., Colwell, R. K., Lin, C.-W. & Gotelli, N. J. 2009 Sufficient sampling for asymptotic minimum species richness estimators. *Ecology* **90**, 1125–1133. (doi:10.1890/07-2147.1)
- Clarke, K. R. 1993 Non-parametric multivariate analyses of changes in community structure. *Aust. J. Ecol.* **18**, 117–143.
- Collins, S. L., Micheli, F. & Hartt, L. 2000 A method to determine rates and patterns of variability in ecological communities. *Oikos* **91**, 285–293. (doi:10.1034/j.1600-0706.2000.910209.x)

- Colwell, R. K. 2009 *Estimates: statistical estimation of species richness and shared species from samples*, v. 8.2. User's Guide and application published at: <http://purl.oclc.org/estimates>.
- Colwell, R. K. & Coddington, J. A. 1994 Estimating terrestrial biodiversity through extrapolation. *Phil. Trans. R. Soc. Lond. B* **345**, 101–118. (doi:10.1098/rstb.1994.0091)
- Connell, J. H. & Slatyer, R. O. 1977 Mechanisms of succession in natural communities and their role in community stability and organization. *Am. Nat.* **111**, 1119–1144.
- Dixon, P. M., Ellison, A. M. & Gotelli, N. J. 2005 Improving the precision of estimates of the frequency of rare events. *Ecology* **86**, 1114–1123. (doi:10.1890/04-0601)
- Dorazio, R. M., Kery, M., Royle, J. A. & Plattner, M. 2010 Models for inference in dynamic metacommunity systems. *Ecology* **91**, 2466–2475. (doi:10.1890/09-1033.1)
- Dunson, W. A. & Travis, J. 1991 The role of abiotic factors in community organization. *Am. Nat.* **138**, 1067–1091.
- Ellison, A. M. *et al.* 2005 Loss of foundation species: consequences for the structure and dynamics of forested ecosystems. *Front. Ecol. Environ.* **3**, 479–486. (doi:10.1890/1540-9295(2005)003[0479:LOFSCF]2.0.CO;2)
- Fujiwara, M. & Mohr, M. S. 2009 Identifying environmental signals from population abundance data using multivariate time-series analysis. *Oikos* **118**, 1712–1720. (doi:10.1111/j.1600-0706.2009.17570.x)
- Gilks, W. R., Thomas, A. & Spiegelhalter, D. J. 1994 A language and program for complex Bayesian modelling. *Statistician* **43**, 169–178. (doi:10.2307/2348941)
- Gotelli, N. J. & Colwell, R. K. 2001 Quantifying biodiversity: procedures and pitfalls in the measurement and comparison of species richness. *Ecol. Lett.* **4**, 379–391. (doi:10.1046/j.1461-0248.2001.00230.x)
- Gotelli, N. J. & Graves, G. R. 1996 *Null models in ecology*. Washington, DC: Smithsonian Institution Press.
- Grossman, G. D. & Sabo, J. L. 2010 Incorporating environmental variation into models of community stability: examples from stream fish assemblages. In *Community ecology of stream fishes* (eds K. Gido & D. Jackson), Washington, DC: American Fisheries Society.
- Grossman, G. D., Moyle, P. B. & Whittaker Jr, J. O. 1982 Stochasticity in structural and functional characteristics of an Indiana stream fish assemblage: a test of community theory. *Am. Nat.* **120**, 423–454.
- Grossman, G. D., Freeman, M. C., Moyle, P. B. & Whittaker Jr, J. O. 1985 Stochasticity and assemblage organization in an Indiana stream fish assemblage. *Am. Nat.* **126**, 275–285.
- Grossman, G. D., Ratajczak, R. E., Crawford, M. K. & Freeman, M. C. 1998 Assemblage organization in stream fishes: effects of environmental variation and interspecific interactions. *Ecol. Monogr.* **68**, 395–420. (doi:10.1890/0012-9615(1998)068[0395:AOISFE]2.0.CO;2)
- Hurlbert, S. H. 1971 The nonconcept of species diversity: a critique and alternative parameters. *Ecology* **52**, 577–585. (doi:10.2307/1934145)
- Jones, C. G., Lawton, J. H. & Shachak, M. 1994 Organisms as ecosystem engineers. *Oikos* **69**, 373–386. (doi:10.2307/3545850)
- Kellogg Biological Station Sampling Protocols 1995 See <http://lter.kbs.msu.edu/protocols/36>.
- Kery, M., Dorazio, R. M., Soldaat, L., van Strien, A., Zuurwijk, A. & Royle, J. A. 2009 Trend estimation in populations with imperfect detection. *J. Appl. Ecol.* **46**, 1163–1172.
- Lawton, J. H. *et al.* 1998 Biodiversity inventories, indicator taxa, and effects of habitat modification in tropical rain forest. *Nature* **391**, 72–76. (doi:10.1038/34166)
- Longino, J. T., Coddington, J. & Colwell, R. K. 2002 The ant fauna of a tropical rain forest: estimating species richness three different ways. *Ecology* **83**, 689–702. (doi:10.1890/0012-9658(2002)083[0689:TAFOAT]2.0.CO;2)
- ILTER 2007 The US Long Term Ecological Research Network. See <http://www.lternet.edu/>.
- Lunn, D. J., Thomas, A., Best, N. & Spiegelhalter, D. 2000 WinBUGS—a Bayesian modelling framework: concepts, structure, and extensibility. *Statist. Comput.* **10**, 325–337. See <http://www.mrc-bsu.cam.ac.uk/bugs/>.
- Manchester, S. J. & Bullock, J. M. 2000 The impacts of non-native species on UK biodiversity and the effectiveness of control. *J. Appl. Ecol.* **37**, 845–864. (doi:10.1046/j.1365-2664.2000.00538.x)
- Manly, B. J. 2009 *Randomization, bootstrap and Monte Carlo methods in biology*, 3rd edn. Boca Raton, FL: Chapman and Hall/CRC.
- McGill, B. J. *et al.* 2007 Species abundance distributions: moving beyond single prediction theories to integration within an ecological framework. *Ecol. Lett.* **10**, 995–1015. (doi:10.1111/j.1461-0248.2007.01094.x)
- Mills, L. S., Soule, M. E. & Doak, D. F. 1993 The keystone species concept in ecology and conservation. *BioScience* **43**, 219–224. (doi:10.2307/1312122)
- Pauly, D. 1995 Anecdotes and the shifting baseline syndrome of fisheries. *Trends Ecol. Evol.* **10**, 430. (doi:10.1016/S0169-5347(00)89171-5)
- R Development Core Team 2008 *R: a language and environment for statistical computing*. Vienna, Austria: R Foundation for Statistical Computing.
- Robert, C. P. & Casella, G. 2004 *Monte Carlo statistical methods*, 2nd edn. New York, NY: Springer.
- Royle, J. A. & Dorazio, R. M. 2008 *Hierarchical modeling and inference in ecology*. Amsterdam, The Netherlands: Academic Press.
- Sanders, H. 1968 Marine benthic diversity: a comparative study. *Am. Nat.* **102**, 243–282.
- Simberloff, D. 1978 Use of rarefaction and related methods in ecology. In *Biological data in water pollution assessment: quantitative and statistical analyses* (eds K. L. Dickson Jr, J. Cairns Jr & R. J. Livingston), pp. 150–165. Philadelphia, PA: American Society for Testing and Materials.
- Solow, A. R. 1994 Detecting change in the composition of a multi-species community. *Biometrics* **50**, 556–565. (doi:10.2307/2533401)
- Walther, G.-R., Post, E., Convey, P., Menzel, A., Parmesan, C., Beebee, T. J. C., Fromentin, J.-M., Hoegh-Guldberg, O. & Bairlein, F. 2002 Ecological responses to recent climate change. *Nature* **416**, 389–395. (doi:10.1038/416389a)
- White, E. M., Wilson, J. C. & Clarke, A. R. 2006 Biotic indirect effects: a neglected concept in invasion biology. *Divers. Distrib.* **12**, 443–455. (doi:10.1111/j.1366-9516.2006.00265.x)
- Whittaker, J. O. 1976 Fish community changes at one Vigo County locality over a twelve-year period. *Proc. Indiana Acad. Sci.* **85**, 191–207.