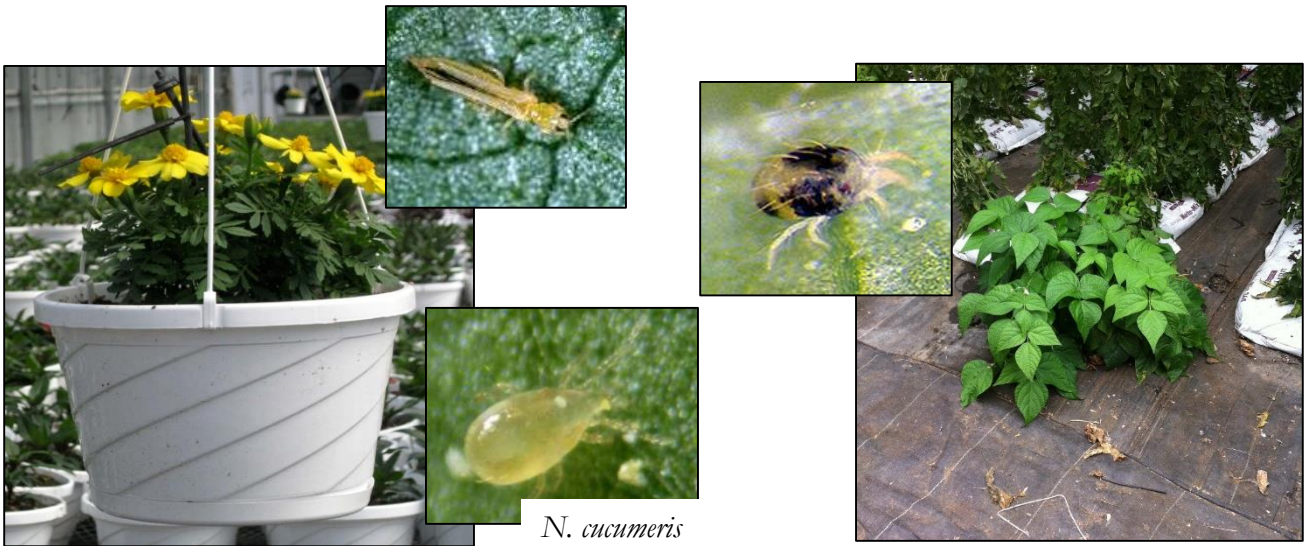


# Plant-Mediated IPM Systems for Greenhouse Crops

## Cheat Sheet



### Marigold Trap Plants

Flowering 'hero yellow' marigolds placed in non-flowering ornamentals & vegetables attract thrips. Can also sustain the predatory mite, *Neoseiulus* (= *Amblyseius*) *cucumeris* providing pollen & attracted thrips as food.

### Bush Bean Trap Plants

'Strike' or 'Provider' bush beans placed in spider mite prone crops attract spider mites.

### Aphid Banker Plant System

Barely, Wheat or Oats sustain *Rhopalosiphum padi* cereal aphids as hosts for the wasp parasitoid, *Aphidius colemani*.

This wasps parasitizes green peach (*Myzus persicae*) & melon aphids (*Aphis gossypii*).

Parasitized aphids turn into golden brown mummies.



Melon



Green peach





### Alyssum Banker/Habitat Plants

Flowering alyssum/lobularia 'snow crystal' placed in non-flowering ornamentals and vegetables attract thrips & provides pollen to the predatory bug *Orius*.



*Orius* spp.

### Ornamental Pepper Banker Plants

Flowering ornamental peppers 'Purple Flash, Black Pearl, Masquerade' placed in non-flowering ornamentals & vegetables attract thrips & provide pollen to the predatory bug *Orius* & predatory mites *Amblyseius swirskii*. Also effective for whiteflies.



*A. swirskii*