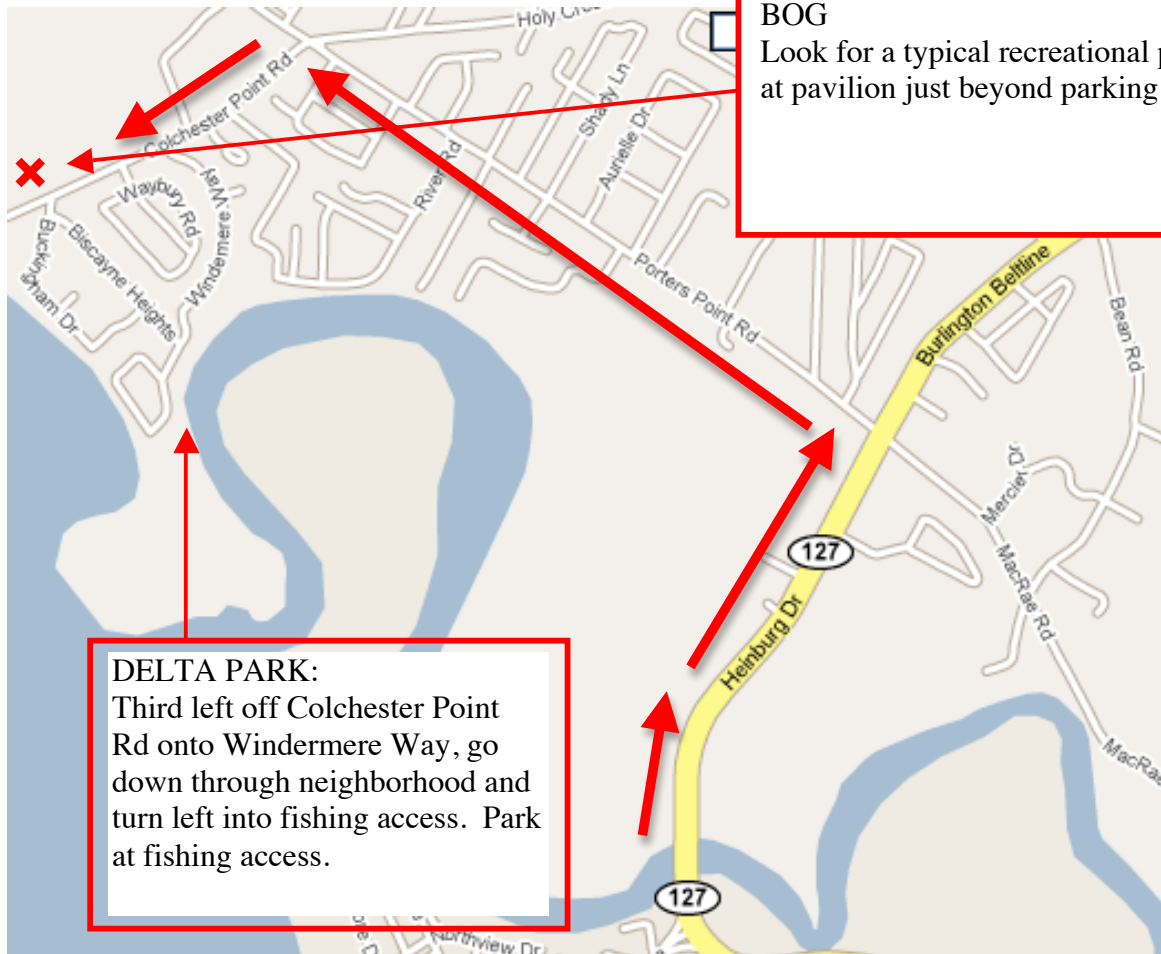


## DIRECTIONS TO FIELD BOTANY (PBIO 109) FIELD TRIP LOCATIONS

List of Field Trips (maps for trips in **bold** below)

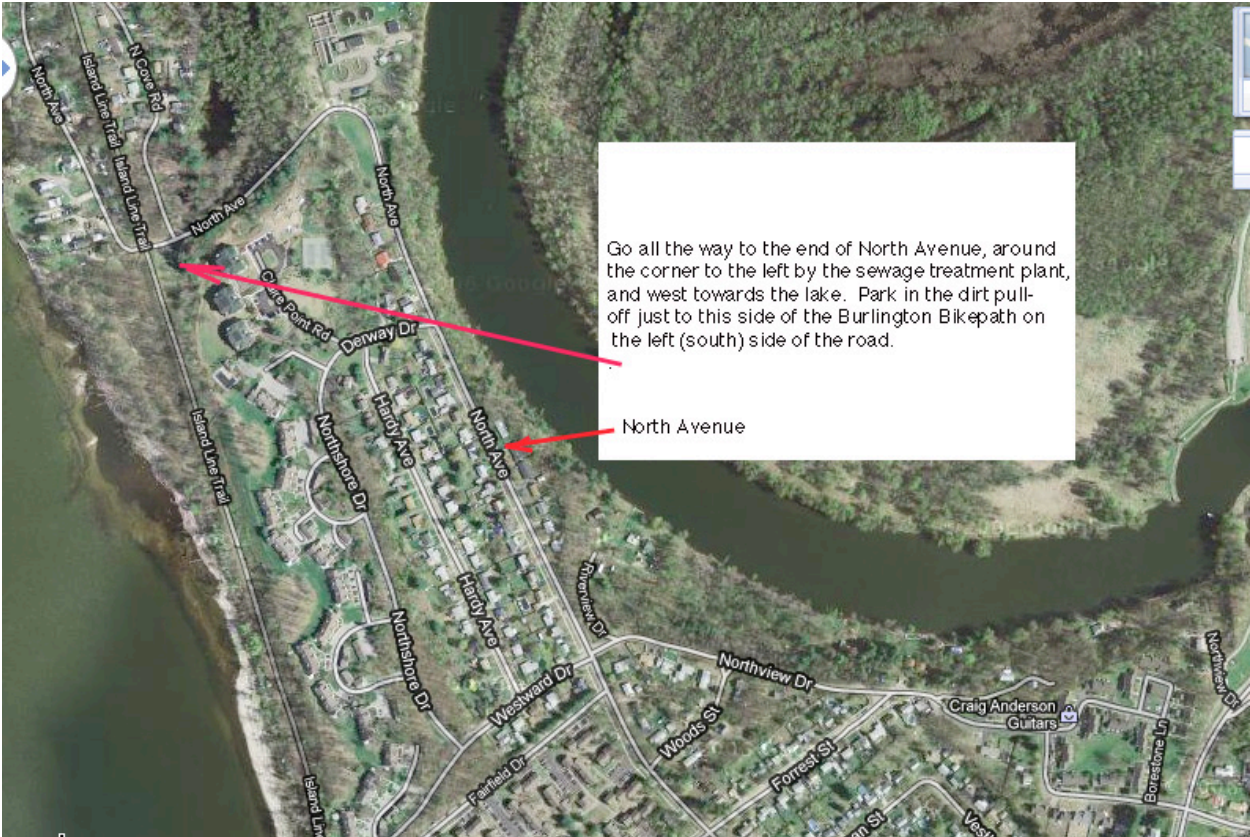
**Airport Park**  
**Beach at end of North Ave**  
**Colchester Bog**  
Centennial Woods  
**Delta Park**  
East Woods  
**Ethan Allen Wetland**  
**Ethan Allen Park**  
Gardner's Island (Day Trip)

**Mouth of the Winooski (Delta Park)**  
**North Beach**  
**Oakledge Park**  
Pringle Herbarium  
**Queen City Park (Red Rocks Park)**  
**Rock Point**  
**Shelburne Bay Fishing Access**  
**Shelburne Pond**

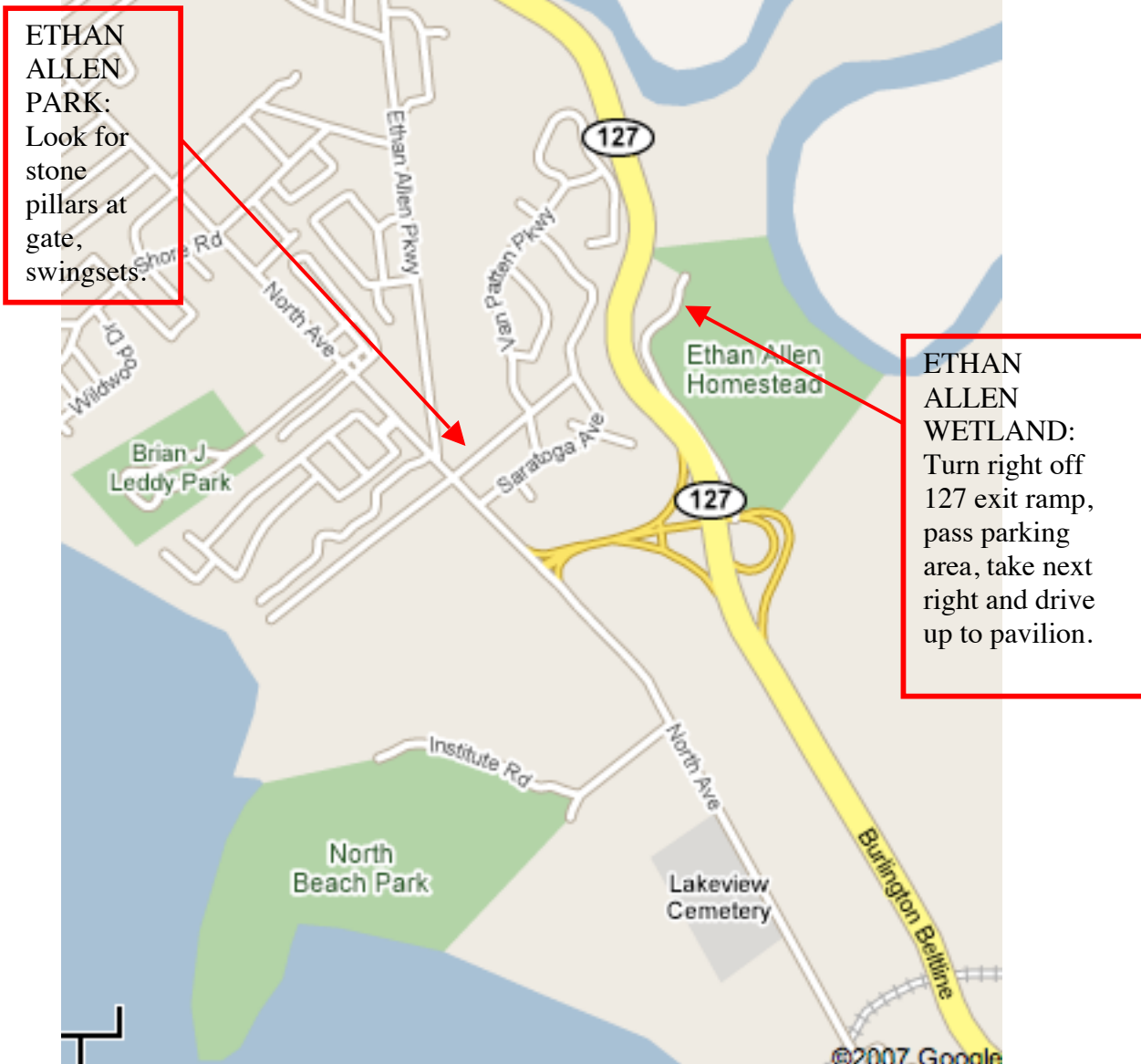


# BEACH AT END OF NORTH AVENUE

To go to this site, you follow the directions towards Ethan Allen Park, but you keep going north on North Avenue.

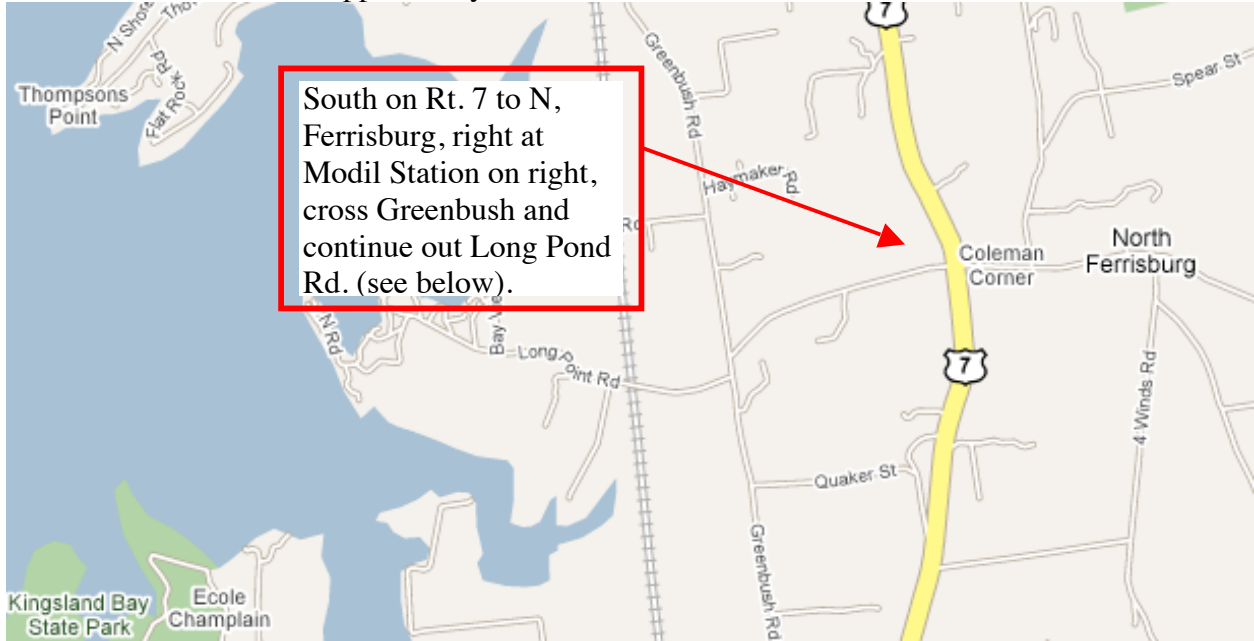


## ETHAN ALLEN PARK AND ETHAN ALLEN WETLAND





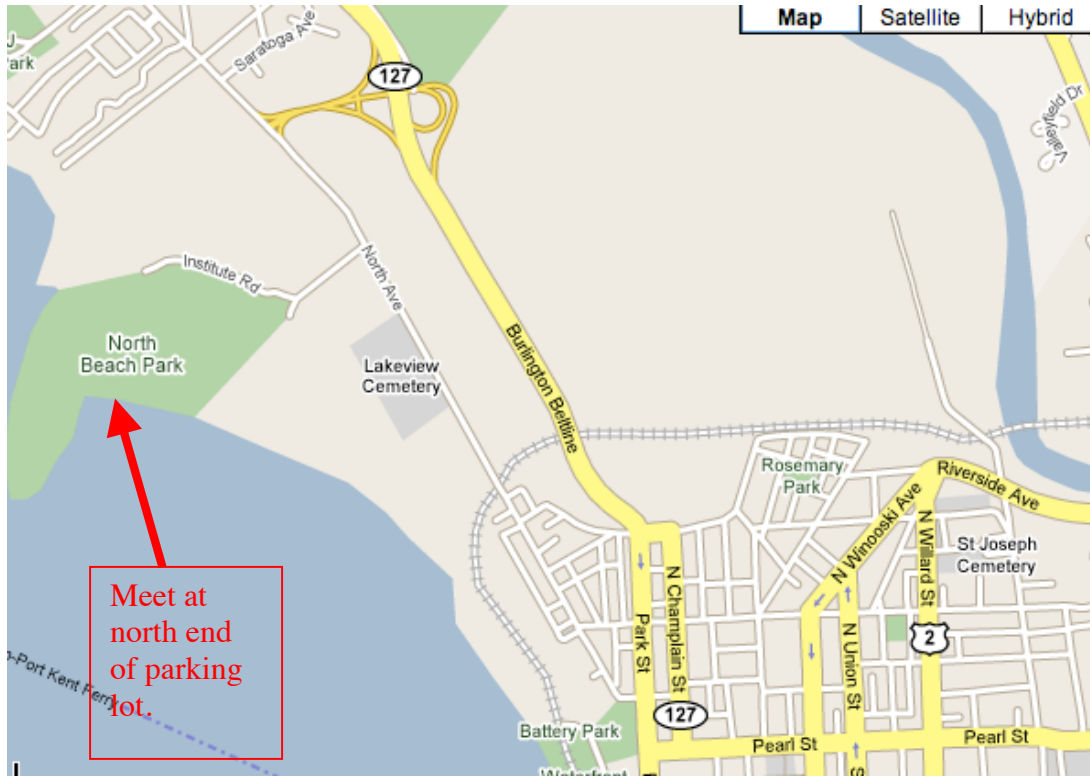
GARDINER ISLAND – approach by car



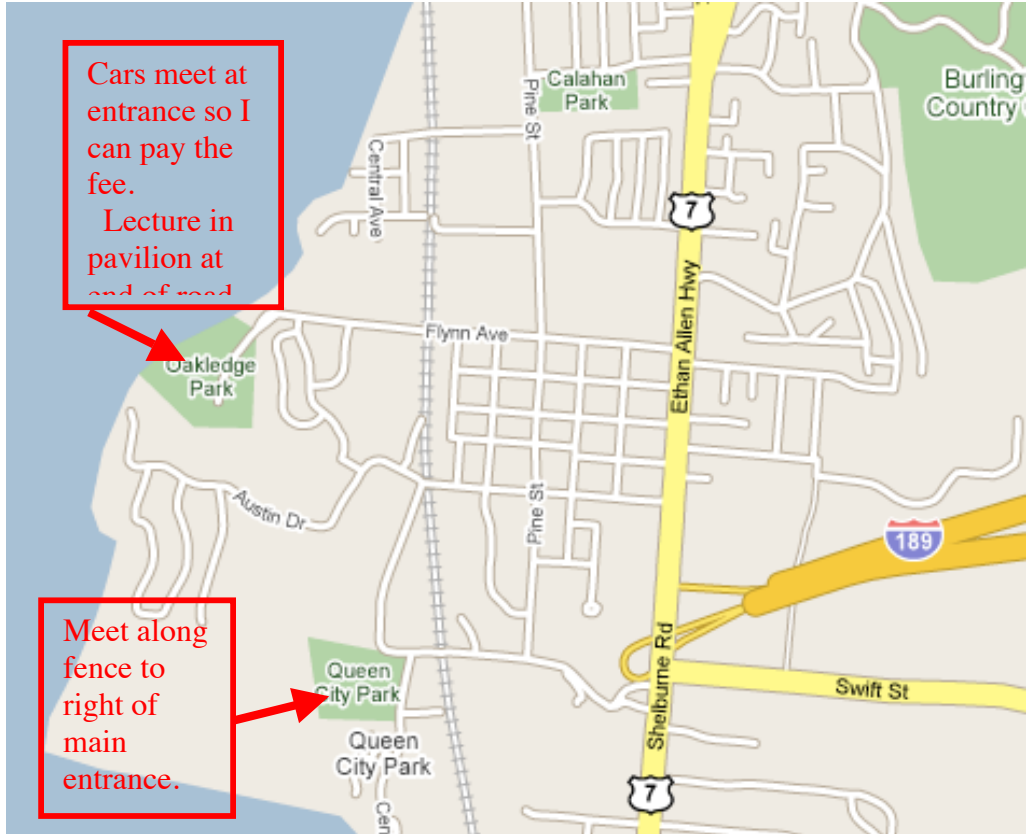
GARDINER'S ISLAND, - detailed view of canoe access



## NORTH BEACH AND ROCK POINT



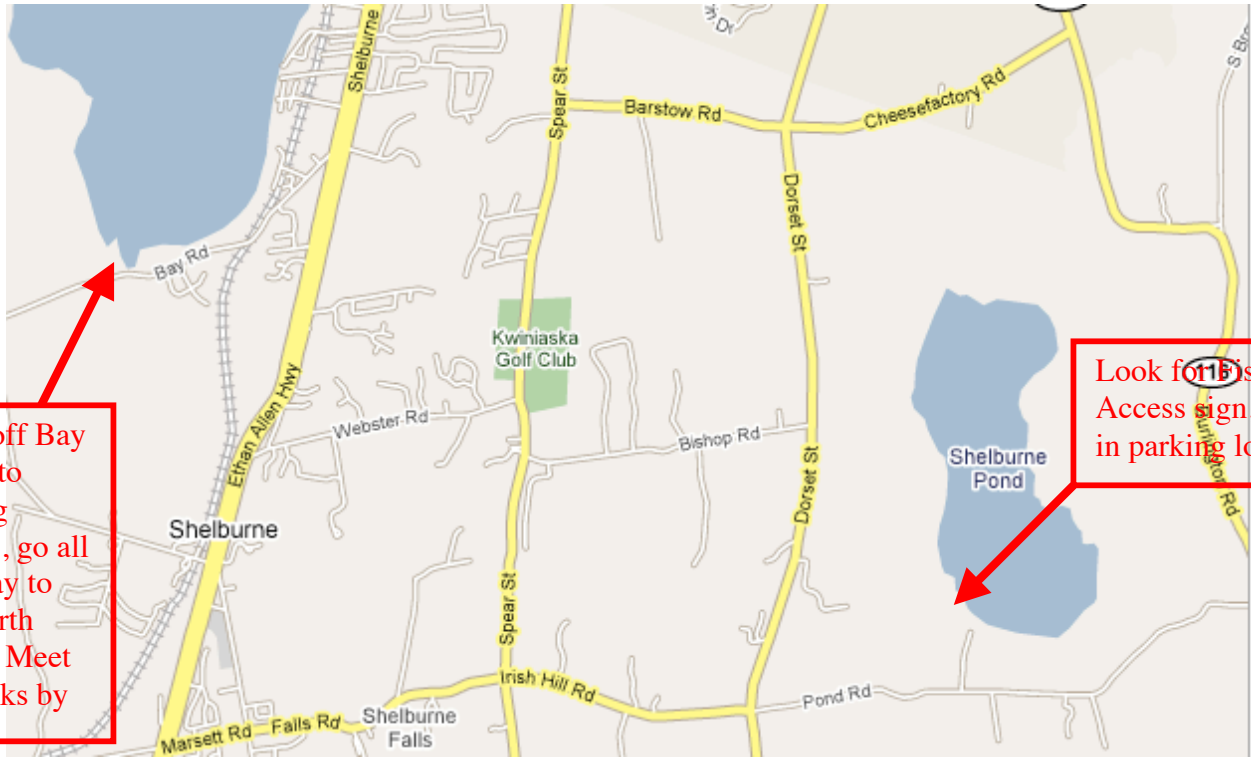
## OAKLEDGE PARK AND QUEEN CITY PRK



Cars meet at entrance so I can pay the fee.  
Lecture in pavilion at end of road

Meet along fence to right of main entrance.

# SHELBURNE BAY and SHELBURNE POND



Turn off Bay Rd. into fishing access, go all the way to the north end. Meet on rocks by water.

Look for 15 Fishing Access sign, meet in parking lot.